

Turn off the lights, Turn on the stars!

“On the earth, even in the darkest night, the light never wholly abandons his rule.”

——— *Jules Verne, Journey to the Center of the Earth.*

Summary

With the rapid development of modern technology and excessive use of artificial lights, light pollution has resulted in increasingly severe problems. Therefore, the proper design and implementation of intervention strategies to address these problems deserve our attention. This report aims to build a **light pollution risk level evaluating model** and provide credible suggestions on how to effectively reduce the negative impacts of light pollution.

Three models are established: Model I: Ecologic-Social-Ecologic(**ESE**) Model; Model II: Light Pollution Risk Assessment(**LPRA**) Model and Model III: Interconnected-ESE Model(**I-ESE**) Model.

For ESE Model (Model I), we first abstract the risk of light pollution into three subsystems : **Economic, Social and Ecological Subsystem** and construct the ESE model. For economic subsystem, we calculate the population growth by the **logistics equation** and measure the light pollution in economic systems. For social subsystem, we take five types of land together with the brightness threshold into account and obtain the proportion of light-pollution-affected land. For ecological subsystem, we set a formula with the number of organisms together with light intensity value to calculate the number of affected organisms.

For LPRA Model(Model II), we use **Analytic Hierarchy Process(AHP)** based on **Google search index** to quantify the light pollution risk level(RL) of a certain region, then apply our model to 284 regions. After that, we use **K-means algorithm** to create a metric system for the risk levels and constructed four ranks: **Slight**(0.0443 ~ 0.1678), **Moderate**(0.1705 ~ 0.2542), **Serious**(0.2568 ~ 0.3698), and **Severe**(0.3976 ~ 0.6186). To apply our model to specific locations, we selected Ordos as **protected land**, Zhaotong as **rural community**, Qingyuan as **suburban community**, and Guangzhou as the **urban community** and obtained their RL scores: **0.1332, 0.1778, 0.2574 and 0.5154**, while their risk levels are slight, moderate, serious and severe respectively.

For I-ESE Model(Model III), by establishing a link between every two subsystems, we constructed the **Interconnected (I)-ESE** Model on the basis of the ESE Model, and obtain quantitative relationships between *ECL* and *SCL*, *ECL* and *ENL* using nonlinear fitting. Based on I-ESE Model, we propose three effective intervention strategies to address the light situation: **I.** Reduce light intensity, **II.** Reduce the impact on society, and **III.** Delimit dark night protection areas and their actions correspondingly.

More specifically, we select Guangzhou and Zhaotong for further discussion and determine their **optimal strategy**: strategy I and II for Guangzhou and strategy II and III for Zhaotong. Then we measure the impacts of these strategies in general and particularly in Guangzhou and Zhaotong using I-ESE Model and visualize the impact with **GE cube**. The risk level in Guangzhou decreased **from 0.5153 to 0.0309** while Zhaotong decreased **from 0.1678 to 0.0885** after 20 years of implementing the optimal strategy.

Finally, the sensitivity and robustness of our model are tested. When we set the cost to be raw data, increase or reduce by 50%, the overall trend of risk level has little difference as the curve remains similar, verifying the sensitivity and robustness of our model.

Keywords: Light Pollution, ESE Model, LPRA Model, AHP, K-means algorithm, GE Cube

Contents

1	introduction	3
1.1	Problem Background	3
1.2	Problem Restatement & Our Work	3
2	Assumptions and Justifications	4
3	Notations	5
4	Establishing the ESE Model	5
4.1	Pre-processing of lighting data	5
4.2	Evaluation in economic subsystem	6
4.3	Evaluation in social subsystem	7
4.4	Evaluation in ecologic subsystem	8
5	Light Pollution Risk Assessment (LPRA) Model	10
5.1	Data proccessing	10
5.2	Analytic Hierarchy Process(AHP) Model based on Google search index	10
5.3	Light Pollution Risk Level Severity Scale	11
6	Application of LPRA Model	12
6.1	Application in 284 regions	12
6.2	Application in Four Locations	13
7	Intervention Strategies Based on I-ESE Model	14
7.1	Establishing the Interconnected-ESE (I-ESE) Model	14
7.2	Quantitative Impact Assessment	15
7.3	Strategy I: Reduce light intensity	16
7.4	Strategy II: Reduce the impact of light pollution on society	17
7.5	Strategy III: Delimit dark night protection areas	18
8	Case Study: Zhaotong and Guangzhou	19
8.1	Analysis of Effectiveness: Strategy I	19
8.2	Analysis of Effectiveness: Strategy II	20
8.3	Analysis of Effectiveness: Strategy III	21
8.4	Selection of the Optimal Strategy	21
9	Sensitivity analysis	22
10	Strengths and Weaknesses	23
10.1	Strengths	23
10.2	Weaknesses	23
11	Strategy-promoting flyer	23

1 introduction

1.1 Problem Background

Estimates suggest that more than one-tenth of the planet's land area experiences artificial light at night - and that rises to 23% if skyglow is included. [1] Artificial lights have revolutionized the way humans live their day-to-day lives, resulting in increasingly severe problems along with their benefits. More than ever, human and environmental health is suffering from this boom of artificial lighting. Unfortunately, we are now faced with what scientists call "light pollution", which poses a great threat to the ecosystem, economy and our society in several aspects.

To tackle this problem, the methodology to measure the influence of light pollution in a certain location, as well as the design of a proper intervention strategy deserve our attention. Some major cities have been aware of the seriousness of light pollution and take the lead in the exploration of governance, but problems regarding lack of legal basis and public awareness have been revealed. Challenged by ICM, we decide to build a model to evaluate light pollution as well as determine corresponding intervention strategies.

1.2 Problem Restatement & Our Work

Considering the background information and restricted conditions identified, we need to take several measures to solve the following problems:

- **Problem Restatement:** Develop a metric to identify and evaluate the light pollution risk level of a certain location.
- **Our work:** We first abstract the risk of light pollution into three subsystems, and calculated the light pollution risks concerning economic, social and ecological subsystems.
- **Problem Restatement:** Apply our metric to four diverse types of locations: a protected land location, a rural community, a suburban community and an urban community.
- **Our work:** Using AHP based on google search index, we quantify the light pollution risk level of a certain region. Then, we selected Ordos, Zhaotong, Qingyuan and Guangzhou for further discussions.
- **Problem Restatement:** Describe three possible intervention strategies and their corresponding actions and their potential impacts on light pollution.
- **Our work:** We propose three effective intervention strategies in three different aspects and their specific actions correspondingly. To evaluate the impact of these strategies, we obtain the quantitative relationships between risk levels in different aspects.
- **Problem Restatement:** Choose two of our locations and determine the most effective intervention strategy in certain locations, as well as their impacts specifically.
- **Our work:** We choose Guangzhou and Zhaotong to determine their optimal strategy through I-ESE Model and evaluated their impacts in GE cube.

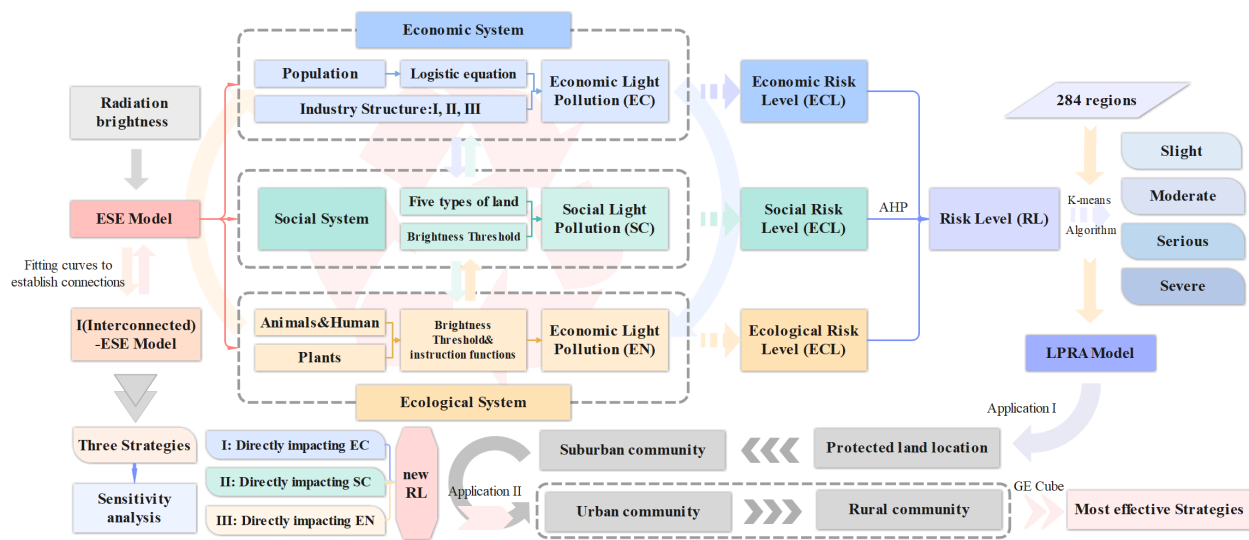


Figure 1: Flowchart of our study

2 Assumptions and Justifications

- **Assumptions:** The population density of organisms remains stable and constant.
- **Justifications:** The environment maintains stability because natural disasters are infrequent while the birth and mortality rates are typically similar.
- **Assumptions:** The industrial structure of primary, secondary and tertiary industries remains unchanged.
- **Justifications:** As the economy of the locations we study are well-developed, the industrial upgrading of these nations is practically complete, thus the changes in proportions of primary, secondary, and tertiary industries are negligible.
- **Assumptions:** The application of artificial light in agricultural production is not considered
- **Justifications:** Compared with those in the secondary industry and tertiary industry, artificial lights in agriculture are not widely used. Thus, the proportion of artificial light used in primary industry is relatively small, and the negative impacts are negligible.
- **Assumptions:** When considering the scoring in our LPRA model, only the selected area is considered, without considering its internal influence and the interaction between regions.
- **Justifications:** As all aspects of risk level are not reflected by a certain indicator only, it can be the result of many factors working together.

3 Notations

Symbol	Definition
EC	Total amount of light pollution produced in the economic system
SC	The rate of light-pollution-risked land
EN	Total number of organisms affected by light pollution in an area
RL	Light pollution risk level of a certain location
ECL	The light pollution risk level in economy
SCL	The light pollution risk level in society
ENL	The light pollution risk level in ecologic system

4 Establishing the ESE Model

Light pollution is the presence of unwanted, inappropriate, or excessive artificial lighting.[2] Too much light pollution washes out the view of the universe, increasing energy consumption, interfering with astronomical research, disrupts ecosystems while affecting the health and safety of both humans and wildlife. Thus, we must evaluate the risk of these different aspects we're currently facing because of light pollution.

Based on research by National Geographic [3], the main effects of light pollution can be broken down into three aspects, thus we identify the light pollution risk level in **Economic System, Social System and Ecological System** respectively. Then, we can establish our light pollution risk evaluation model: **Economic-Social-Ecological System Model**, we shall call it **ESE Model** in the following paper for short. To this end, our ESE Model is the combination of three submodels, which will be introduced respectively in the following paragraph, both shown in Figure 2:

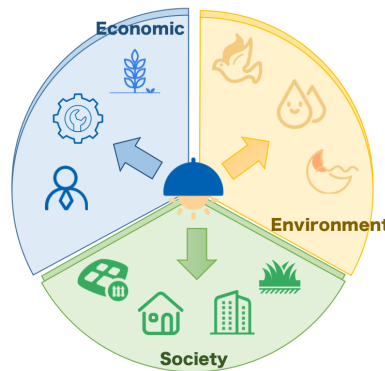


Figure 2: Breakdown of light pollution risk

4.1 Pre-processing of lighting data

Data preprocessing is a way of converting this raw data into a much-desired form so that useful information can be derived from it, which is fed into our model in evaluating the light pollution risk

level in a certain area. We obtain data on grayscale values of the original impact of nighttime lighting (DN) from LPSTI[8], then we eliminate DN values that are less than zero. Then, we radio-metrically correct the nightlight data for the area, the radiation correction equation is as follows:

$$L = DN^{\frac{2}{3}} \times 10^{-10} \quad (1)$$

where L represents the corrected radiation brightness value and DN represents the original grayscale value.

4.2 Evaluation in economic subsystem

Light pollution generates significant costs, which in the U.S. amounts to nearly 7 billion dollars annually. [4] To evaluate the risk level regarding light pollution in the economic system, we consider the phenomenon of the accumulation of population in an economic system. As the economic system is a complicated, interrelated system, an initial impact on the population will lead to an exponentially higher consequential impact on risk levels. Inspired by a population dynamics method [5], we formulate the N as a logistic growth function in the following Equation 2:

$$\frac{dN}{dt} = r \times N \times \left(1 - \frac{N}{N_m}\right) \quad (2)$$

where N represents the population in a certain location and N_m represents the maximization of the population. r represents the natural growth rate of the population. Then we can solve the logistic equation by separating variables, integrating and rearranging to get the analytical solution of the N value:

$$N(t) = \frac{N_m}{\left(\frac{N_m}{N_0} - 1\right)e^{-rt} + 1} \quad (3)$$

When considering the compositional structure in an economic system, industries are categorized into primary, secondary, and tertiary sectors. We reasonably assume that the ratio of the three industries remains unchanged during the research period. After calculating the projected value of population growth, we can define **the total amount of light pollution produced in the economic system(EC)** by the following Equation 4:

$$EC = \sum_{i=1}^3 N \times PC_i \times PLP_i \times tm_i \quad (4)$$

where PC_i represents the proportion of primary, secondary and tertiary industries in an economic system respectively and PLP_i represents the light pollution per capita in primary, secondary and tertiary industries. tm_i represents the length of time that the industry uses artificial light.

Based on data from UN Data[9], we visualized the data on the total population and population growth rate in the past decade in the world, where: WRL represents world data, LMC represents low-middle income countries, UMC represents middle-high income countries and HIC represents high-income countries, shown in Figure 3. Then, Figure4 shows the percentage of primary, secondary and tertiary industries respectively. It can be easily concluded that during the past decade, the proportion of different economic sectors remains unchanged, which reflects the rationality of our assumption.

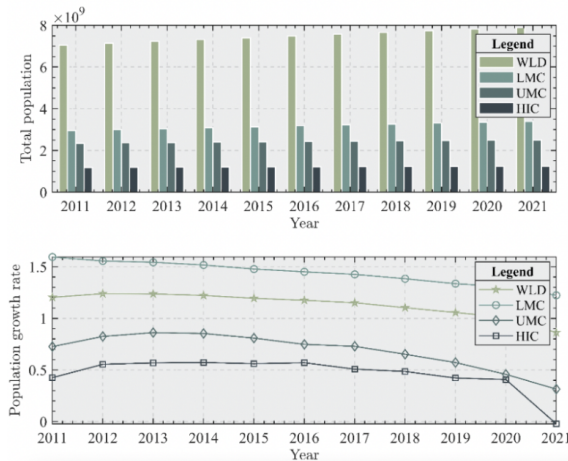


Figure 3: Total population and growth rate

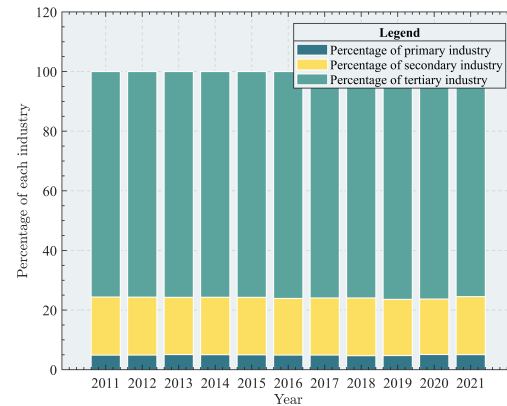


Figure 4: Proportion of industries

To this end, we have obtained the equation to calculate the total amount of light pollution produced in the economic system, thus the light pollution risk level depends on how the economic system is affected by light pollution, which can be represented by EN.

4.3 Evaluation in social subsystem

Other than economic effects, the influence of light pollution on social aspects can't be denied. Low levels of artificial lights might lead to a higher rate of crime, thus there has been a trade-off between the positive and negative effects impacting a specific location.

Considering the fact that the levels and pathways of light pollution vary with different land-use purposes, we divided the land in a certain location into four types: **Commercial land, residential land, administrative land, green land and others**. To better represent the different effects on the social environment when the light intensity is too high or too low, we set the threshold interval as follows:

- Light intensity is less than the left endpoint of the threshold interval – high potential risks in crime issues
- Light intensity is more than the right endpoint of the threshold interval – high potential risks in traffic accidents

Based on related research in night lighting design[8], we made distinctions between different land uses and their respective characteristics, thus calculating corresponding threshold intervals respectively. Results are shown in Table 1.

Table 1: Threshold intervals for different land types

Classification	Characteristics	Threshold intervals
commercial land	used for the sale of goods and services	10~20
residential land	used for housing	3~6
administrative office land	for non-profit facilities	15~25
green land	main existential form to improve urban ecology	≤ 3
others	/	2~5

Based on data from The night sky in the World[9], we obtained the area of each land type in the requested area that falls out of the threshold interval. Thus, we can calculate **the rate of light-pollution-risked land(SC)** by **the proportion of the sum of area outside the threshold to the total area of all types**, as Equation 5 shows:

$$SC = \frac{Area_{co} + Area_{re} + Area_{gr} + Area_{ad} + Area_{ot}}{Area_{total}} \quad (5)$$

where $Area_{co}$, $Area_{re}$, $Area_{gr}$, $Area_{ad}$, $Area_{ot}$ represents the area that falls out of the threshold interval in commercial land, residential land, administrative land, green land and others. $Area_{total}$ represents the total area of all types. Through the calculation of SC , we can obtain the proportion of light-pollution-risked land, thus evaluating the light pollution risk level in a certain area.

4.4 Evaluation in ecologic subsystem

Light pollution at night above a certain level may affect the normal survival of nocturnally active biological species, such as migration patterns, wake-sleep habits, and habitat formation. Therefore, we suppose that the light pollution risk level lies in the degree to of animals and plants are affected by light pollution.

A study of about 3,000 urban sites around the U.S.[10] found that trees and other woody plants exposed to constant artificial light at night began leafing out several days earlier than those that didn't have nighttime lights. The evident difference across temperatures is shown in Figure 5.

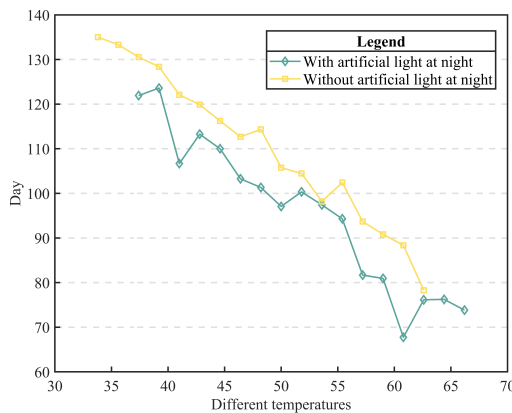


Figure 5: Day of year when leaf buds break

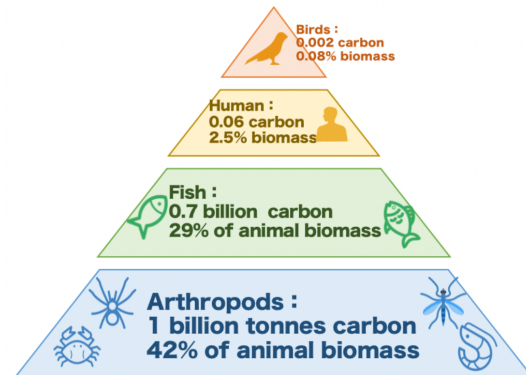


Figure 6: Proportion of species

For the evaluation of the ecologic system, we selected seven target subjects: **Rodents, Birds, Common Fish, Tropical Fish, Trees, ordinary human and Photosensitive human**, while the proportion of some species is listed in Figure 6. Then we classify them into three categories – **Aquatics**(common fish and tropical fish), **terrestrials**(rodents, birds and trees) and **human**(ordinary and photosensitive). The following Table 2 shows the illumination thresholds for the effect of light on animal and human rhythms. [6]

Table 2: illumination thresholds for the effect of light

Classification	Illumination suppression threshold(lx)
Rodents	0.03
Birds	0.3 ~ 1
Tree	0
Common Fish	1
Tropical fish	0.3
Human(Photosensitive)	6
Human(ordinary)	40 ~ 350

The first four threshold values come from a study by Yun, Hee-Kyung [7] while the threshold value of trees is based on a study on how urban lights at night influence the growing season. A study of about 3,000 urban sites around the U.S. found that trees and other woody plants exposed to constant artificial light at night began leafing out several days earlier than those that didn't have nighttime lights. The difference was evident across temperatures, thus we take the threshold value of trees to be 0.

It can be concluded that once the light intensity is greater than the threshold, light pollution will affect the normal survival of living species. Therefore, we use the following equations to calculate **the total number of organisms affected by light pollution in an area (EN)**. Based on the former three categories, we calculated their EN respectively.

For terrestrials:

$$EN_t = \sum_{i=1}^3 type_i \times pl_1 \times 1_A(lg \geq lm_i) \times R \quad (6)$$

Then, for aquatics:

$$EN_a = \sum_{i=4}^5 type_i \times pl_2 \times 1_A(lg \geq lm_i) \times R \quad (7)$$

Lastly, for humans:

$$EN_h = \sum_{i=6}^7 type_i \times 1_A(lg \geq lm_i) \times R \quad (8)$$

where:

- $type_i$ represents the population density of rodents, birds, trees, common fish, tropical fish, ordinary humans and photosensitive humans respectively.
- pl_i represents proportion of surface area covered by land (i=1) and water (i=2).

- lm_i represents the suppression of melatonin secretion threshold of rodents, birds, common fish and tropical fish, shown in Table 2.
- R represents the total surface area at a certain location.
- lg represents the light levels in the area. It should be noticed that the instruction functions $1_A(lg \geq lm_i)$ equals 1 when the light level is larger than the threshold and vice versa equals 0.

Thus, we obtain the equation to calculate the total number of organisms affected by light pollution in an area(**EN**) in Equation 9:

$$EN = EN_t + EN_a + EN_h \quad (9)$$

Higher EN represents more organisms would be affected by light pollution in a certain area and more damage to the biosphere, thus it means a higher light pollution risk in the ecologic system. To this end, we develop an ecological risk model and use EN to evaluate the light pollution risk of the ecological system.

To this end, we have established three interlocking submodels - **Economic-Social-Ecological System Model** - that evaluates the light pollution risk level in three aspects respectively. Through the three indicators EC , SC and EN , we can use the AHP model introduced later to evaluate the light pollution risk level specifically in a certain area.

5 Light Pollution Risk Assessment (LPRA) Model

5.1 Data proccessing

The three subsystems of the ESE Model have different dimensions of score indicators. To eliminate the impact of data due to different dimensions, we first normalize the data for each metric, which means the scores we measure are limited in the range of 0 to 1. Since the level of risk posed by the three subsystems is a positive indicator, we use the following equation to normalize:

$$x_i^{new} = \frac{x_i - x_{min}}{x_{max} - x_{min}} \quad (10)$$

x_i^{new} indicates the data normalized, x_i indicates the initial data and n indicates the number of the data.

5.2 Analytic Hierarchy Process(AHP) Model based on Google search index

To measure and assess the level of light pollution risk in a region, we consider its three economic, social and ecological aspects of risk. Therefore, we need to combine the scores of the three subsystems of the standardized **ESE Model**: ECL , SCL , and ENL , to form the indicator RL .

The risk level of economic, social and ecological risk. were considered. Then We establish the initial Comparative Matrix.

$$M = (a_{ij})_{3 \times 3}$$

The a_{ij} represents the relative importance of index i to index j . The search index can reflect a certain extent the hotness of people's attention at a specific time and can be used to circumvent the subjectivity of the hierarchical analysis method. The search indexes of the three sections are shown

in Figure 7. The search index we obtain is 63.41 for "economy", 65.46 for "society", and 68.47 for "ecology". So we get the relative importance of each index in the matrix:

$$M_0 = \begin{bmatrix} 1 & 63/65 & 63/68 \\ 65/63 & 1 & 65/68 \\ 68/63 & 68/65 & 1 \end{bmatrix}$$

The normalized eigenvector is (0.3214, 0.3316, 0.3469), which is shown in Figure 8.

Therefore, $W = (0.3214, 0.3316, 0.3469)$ is taken as the weight vector among ECL , SCL , and ENL .

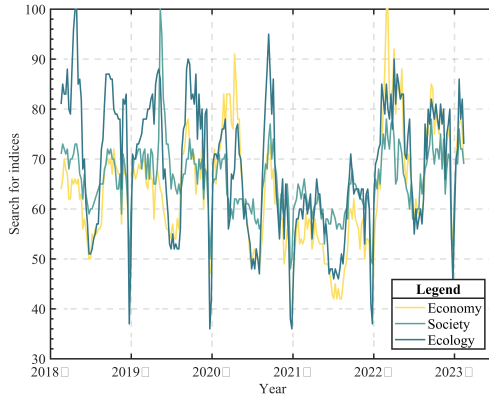


Figure 7: Google Search Index

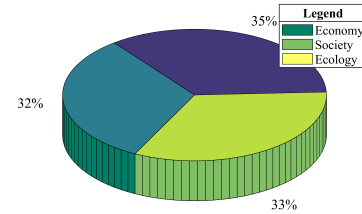


Figure 8: Proportion of each component

After the consistency test, we can complete the quantification of the risk level. Based on the weight vectors W_0 , we calculate the score of the risk level in Equation 11.

$$RL = W_1 \times ECL + W_2 \times SCL + W_3 \times ENL \quad (11)$$

where RL represents the risk level of light pollution. ECL , SCL and ENL represent the economic, social and ecological risk levels respectively.

5.3 Light Pollution Risk Level Severity Scale

We classified all 284 regions in China into four levels of severity of plastic waste. Slight, Moderate, Serious and Severe, by clustering the dataset into three using the K-means algorithm to divide the dataset into four clusters in Table 3.

Table 3: Classification based on K-means

Degree	Slight	Moderate	Serious	Severe
Maximum Value	0.17050261270	0.25424527533	0.39769974082	0.61860669274
Minimum Value	0.04432992940	0.17050261270	0.25424527533	0.39769974082
Cluster Center	0.12108674	0.215758722	0.293293568	0.484986811
Number of regions	64	159	46	15

6 Application of LPRA Model

6.1 Application in 284 regions

We calculated the scores for **all 284 regions** using LPRA Model. Specific risk levels can be found in Appendix A. What's more, We created Figure 9 to analyze the distribution of light pollution levels and selected four categories from which to analyze the patterns.

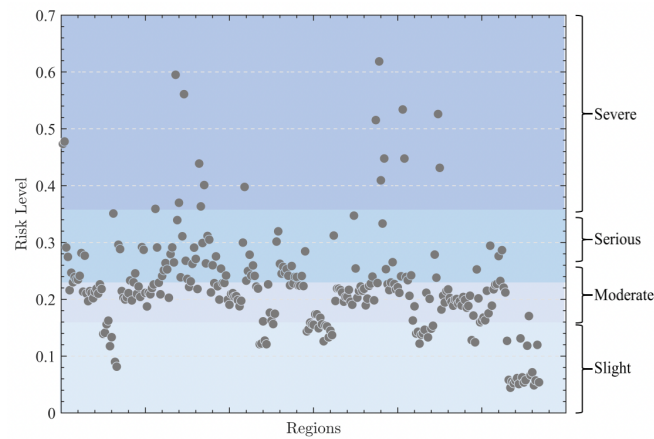


Figure 9: Risk level of light pollution in 284 regions

It can be seen that the distribution of light pollution risk levels shows more in the middle and less in the ends. It shows the balanced development of these areas, and the high-risk level is mostly concentrated in less prosperous cities, while the number of villages with low risk is also less.

Meanwhile, we made a heat map of light pollution risk in each region of China according to the provincial risk level in Figure 10. Four different types of areas - a protected land location, a rural community, a suburban community, and an urban community - were selected to measure and estimate the risk level.



Figure 10: Heat map of light pollution risk levels in China, mainland

6.2 Application in Four Locations

To make the result more representative without losing adaptability, we selected four different cities in China: **Ordos, Zhaotong, Qingyuan and Guangzhou** as location of **protected land, rural community, suburban community and urban community** respectively.

For each location, we collected basic data such as its population, area, climate.etc. from National Bureau of Statistics[11], along with data used in ESE Model mentioned above. Then, the LPRA Model is used to analyze the light pollution risk level of each location while The value of each indicator (EC, EN, SC) is represented by radar charts. The comparison results are shown in Figure 11.

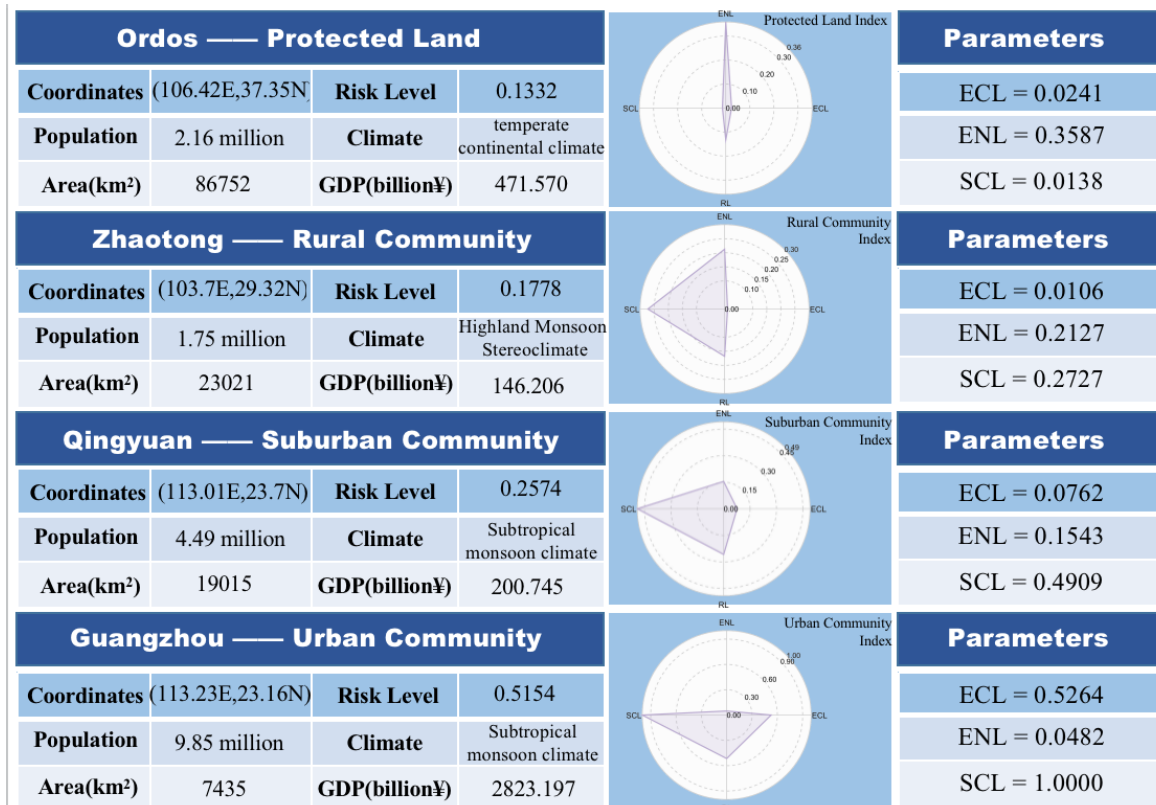


Figure 11: Information of the four locations

• Protected Land

Located at the eastern edge of the Asian-African desert, Ordos Relic Gull National Nature Reserve was promoted to a national nature reserve in 2001, which the main objects of protection being wildlife birds including relic gulls and desert ecosystems[12]. Thus, we selected Ordos to evaluate the light pollution risk in a protected land location.

Figure 11 shows that **ENL value in Ordos is remarkably higher** than the other three locations while **SCL value is significantly lower**. It is consistent with the objective facts of the nature reserve that they mainly serve as a habitat for different species and help protect endangered species, while economic and social aspects are usually not a primary consideration when it comes to a nature reserve. This result fully justifies the validity of our model.

- **Rural Community**

Zhaotong is located in the hinterland of the Wumeng Mountains in Yunnan Province, 96.3% of whose territory is a mountainous area with severe stone desertification. With poor transportation and low technical level, people deep in the mountains have difficulties in survival. Thus, we consider Zhaotong as a rural community to assess its light pollution risk level.

Figure 11 shows that **both ECL and SCL in Zhaotong is relatively low among the four locations**, indicating that the economic system in Zhaotong suffers least from light pollution in the case. The result is consistent with our assumption as well as real-life circumstances as economic production in Zhaotong mainly depends on agriculture whose light pollution is slight. However, relatively backward social development level as well as extremely inconvenient traffic led to relatively vulnerable social aspects.

- **Suburban Community**

Located on the periphery of the Pearl River Delta Economic Zone, Qingyuan has a vast territory and uneven development in many aspects. In terms of geographical location, Qingyuan is the most livable city in Guangdong with beautiful scenery. In a sense, it has become the back garden of Guangdong, thus we consider Qingyuan as a suburban community and apply our model. According to our results, Qingyuan has a relatively **high SCL and low ENL** due to its low biological reserve and high population.

- **Urban Community**

Guangzhou is the capital of Guangdong Province as well as an international trade center and comprehensive transportation hub in China. Thus, it's rational for us to consider Guangzhou as an urban community and apply our model.

We can see from Figure 11 that Guangzhou has **the highest SCL and ECL while the ENL is lowest**, which confirms our model setting as light pollution gross domestic product and social development level in Guangzhou are high in reality.

7 Intervention Strategies Based on I-ESE Model

7.1 Establishing the Interconnected-ESE (I-ESE) Model

The economy, society and ecosystems are interdependent and inextricably linked. No policy can act on just one part of them. Changing the level of risk in one has potential impacts on other systems.

During the process of establishing the ESE Model(Model I), we identified the light pollution risk level in Economic System, Social System and Ecological System respectively and build three models based on this breakdown respectively. To determine the overall impact of different strategies on the risk of light pollution at a site and to assess their potential impact in the three subsystems, it is necessary to establish correlations between ECL, SCL and ENL.

After determining the connection between the three subsystems, we need to test the correlation between the two. Among them, **ECL has a significant negative correlation with ENL and ECL has a significant negative correlation with SCL**. Therefore, we obtained the observed values and fitted curves by constructing nonlinear regressions for the variables with correlations as in Figure 12.

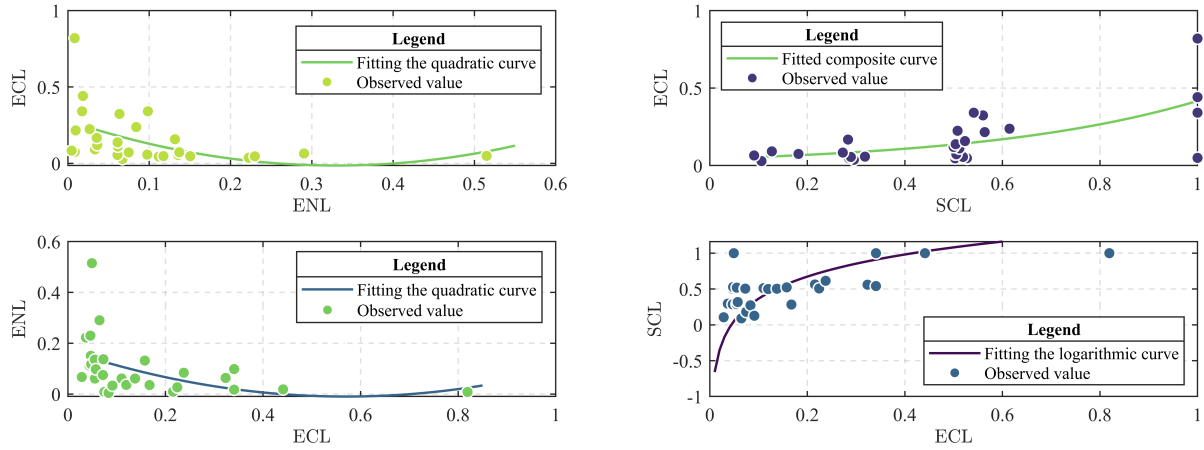


Figure 12: Fitting curves of the three subsystems

Meanwhile, we give the quantitative relationship between two and two in Table 4.

Table 4: Quantitative relationships between subsystems

Serial No.	Curve Type	Equation
A	Quadratic curve	$ECL = 0.279 - 1.774 \times ENL + 2.686 \times ENL^2$;
B	Composite curve	$ECL = 0.044 \times 9.472^{SCL}$
C	Quadratic curve	$ENL = 0.171 - 0.634 \times ECL + 0.556 \times ECL^2$
D	Logarithmic curve	$SCL = \log_{9.472}(ECL)$

At this point, the I-ESE Model, a risk assessment system for the interaction of three subsystems, is constructed.

7.2 Quantitative Impact Assessment

To assess the impact of the strategy on the risk of systems, we need to consider the reduced value of the risk assessment(ΔX).

To evaluate the impact of each strategy on risk level reduction, we need to introduce the light pollution investment cost($Cost$). The impact is estimated with a constant investment cost. Considering the **differences in the development level** of each region, we obtain the cost of environmental pollution treatment as about 8.43‰ of GDP based on the Annual Report of Ecological and Environmental Statistics 2021, as $Cost = 0.000843 \times GDP$.

Having obtained the reduction in risk for systems, we can then obtain the new subsystem risk level(XL) in Equation 12.

$$XL_{new} = \frac{(X - \Delta X) - X_{min}}{X_{max} - X_{min}} \quad (12)$$

where X represents the risk of the three subsystems, taking the values EC , SC , and EN .

The level of risk in one of the subsystems is influenced by strategies, and the level of risk in the other two systems is influenced by the I-ESE model. From this, we obtain three indicators-*ECL*, *SCL*, and *ENL*.

After obtaining the risk level of the three subsystems, we substitute it into Equation 11 of **Model II (LPRA)** to obtain the risk level after implementing(RL_{new}) the strategy.

Based on the three interconnected subsystems, we propose specific strategies in three aspects in Figure 13.

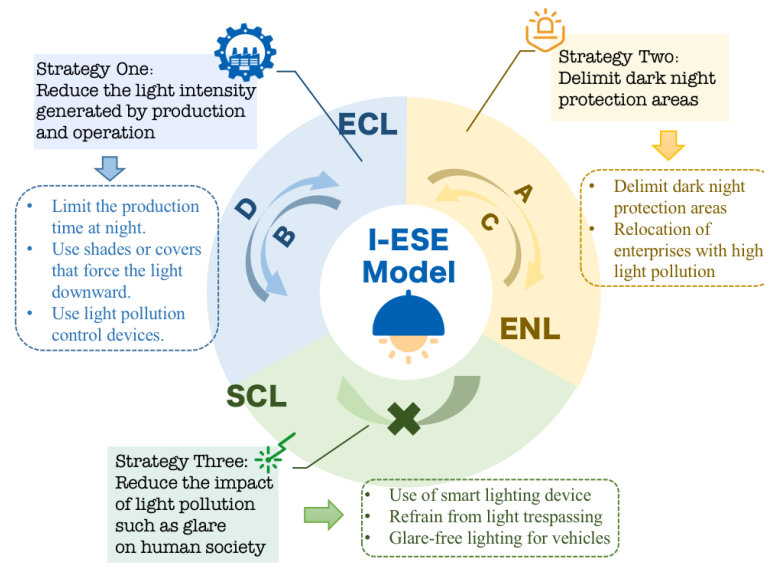


Figure 13: Overview of Intervention Strategies

7.3 Strategy I: Reduce light intensity

The International Dark-Sky Association estimates that 1/3 of all lighting is wasted at an annual cost of 2.2 billion dollars. [14] Measures to reduce light intensity mainly lies in economical aspects as the economic effects of light pollution can be just as tragic as ecological aspects.

- **Specific Actions**

- **Reasonably limit the production and operation time of enterprises at night**

Switching off unnecessary lights during non-production time can hugely help in reducing light pollution. Appropriately limiting the production and operation time for some high light-pollution industries can hugely help in reducing light intensity in economic aspects.

- **Use shades or covers that force the light downward**

Using shades or covers to help the light better focus on the intended lighting area during production is an effective way. Their usage produces less spillover which can be part of the original light fixture or can be purchased separately.

- **Use light pollution control devices** These days, there are many ways to automatically limit light usage with lighting controls. Examples are: using dimmers to reduce the intensity of the light,

motion sensors so that lights only turn on when someone is in the area and timers to control when lights turn on and off.

• Potential Impacts

The strategy functions mainly by limiting the production and operation time at night. Therefore, the formula for the reduction of production and operation time (Δt) for the firm is obtained in Equation 13.

$$\Delta t = t_{initial} - t_{limit} = \frac{Cost}{P_2 + P_3} \quad (13)$$

- where $t_{initial}$ represents the prescribed time for enterprises to stop production and operation, t_{limit} represents the original production and operation stopping time without intervention, P_2 represents the average production value per hour in the secondary industry and P_3 represents the average turnover per hour in the service sector. Using Δt and the population (N), we then obtain the reduction in EC(ΔEC) in Equation 14.

$$\Delta EC = N \times (PC_2 \times PLP_2 + PC_3 \times PLP_3) \times \Delta t + \Sigma \delta \quad (14)$$

- where PLP_2 represents light pollution from the secondary industry, PLP_3 represents light pollution from the tertiary industry, and $\Sigma \delta$ represents the reduction of light pollution by the remaining measures.

After calculating the ΔEC , it is substituted into Equation 12 to calculate the economic risk level (ECL^{new}) after implementing the strategy. The new social (SCL^{new}) and environmental (ENL^{new}) risk levels are then derived by bringing in Equations C and D based on **I-ESE model**. To this end, the light pollution risk level (RL_1^{new}) is calculated by Equation 11.

Thus, we measured the potential impact in terms of **the change in SCL^{new} and ENL^{new} after changing the strategy** while the change in risk level(RL^{new}) indicating the overall impact.

In conclusion, without losing universality on the basis of the simplified model, we consider **reasonably limiting the production and operation time of enterprises at night** as the main action taken to reduce light intensity and evaluate its impacts on ECL.

7.4 Strategy II: Reduce the impact of light pollution on society

Excess artificial light at night disrupts the cycle, suppressing melatonin production and negatively affecting human health. Also, safety-related dangers that come with poor visibility at night are caused by glaring lights and result in more light pollution risks in our society.

• Specific Actions

- Use of smart lighting devices

LED light technology has evolved rapidly over the past few years, which is the best type of light to help reduce light pollution because their beams are more focused than other types such as fluorescent or metal halide. Thus, switching to LED lighting reduces brightness without affecting visibility and is able to effectively eliminate social risks.

- **Refrain from light trespassing** The use of bright outdoor lights directed toward neighboring houses is likely to increase the risk of sleep disorders. Therefore, it must be ensured that outdoor lights do not trespass into residential houses. For example, light shields offer many benefits, including reduced glare and improved night vision.
- **Glare-free lighting for vehicles driven at night** Dim lighting while driving at night is just enough for streets and highways already lit with artificial lighting. Thus, outdoor lights with glare should be replaced with low-glare alternatives.

- **Potential Impacts**

The implementation of this measure is mainly through the use and extension of smart devices, thus it is necessary to calculate the number of street lights that need to be replaced, given in Equation 15.

$$Num = \frac{Cost}{P + P_{work}} \quad (15)$$

- where Num represents the number of smart lighting devices that need to be placed, P represents the price of smart devices, and P_{work} represents the construction price.

After obtaining the number of streetlights that need to be replaced given a certain amount of cost, we can calculate the reduction of $SC(\Delta SC)$ in Equation 16 by the difference between street lighting brightness before and after the replacement.

$$\Delta SC = (light_{initial} - light_{smart}) \times Num + \Sigma \delta \quad (16)$$

- where $light_{initial}$ represents the brightness of the original streetlight, $light_{limit}$ represents the brightness after using the smart street light, and $\Sigma \delta$ represents the reduction of light pollution by the remaining measures.

As ΔSC is obtained, it is substituted into Equation 12 to calculate the social risk level (SCL^{new}) after implementing strategy two. The new economic risk levels(ECL^{new}) are then derived by bringing in Equation B in our **I-ESE model**. Then, the light pollution risk level (RL_1^{new}) is obtained by bringing into Equation 11.

Thus, we measured the potential impact by evaluating the change in SCL^{new} after implementing the strategy, with the change in risk level(RL^{new}) indicating the overall impact.

7.5 Strategy III: Delimit dark night protection areas

The conflict between ecological systems and light pollution has become more and more prominent in recent years. Thus, industrial transformation is a key way to coordinate economic development and environmental protection to achieve sustainable development and reduce light pollution risks.

- **Specific Actions**

- **Delimit dark night protection areas**

According to China Biodiversity Conservation and Green Development Foundation, locations with a certain biological density size are encouraged to designate dark night protection zones and make strict control of the use of lights in and around protected areas.

- **Relocation of enterprises with high light pollution**

- **Potential Impacts** To make a better understanding as well as fully implement strategy three, it is optimal for us to set up protected areas for specific species. Therefore, it is particularly significant to calculate the extent of implementation of the protected area, and we obtained Equation 17 to establish the area of the protected area.

$$Sq_{protect} = \frac{Cost}{C_{protect}} \quad (17)$$

- $Sq_{protect}$ represents the area of ecologic reserve in a location. After obtaining $Sq_{protect}$, we can make improvements to the equation in the ecologic system. Since only plants and animals need to be considered for the establishment of light pollution protection zones. Then the reduction of $EN(\Delta EN)$ can be calculated, shown in Equation 18.

$$\Delta EN = \sum_{i=1}^3 type_i \times pl_1 \times 1_A(lg \geq lm_i) \times Sq_{protect} + \sum_{i=4}^5 type_i \times pl_2 \times 1_A(lg \geq lm_i) \times Sq_{protect} + \Sigma \delta \quad (18)$$

- where $\Sigma \delta$ represents the reduction of light pollution by the remaining measures.

After calculating the ΔEN , it is substituted into Equation 12 to calculate the ecological risk level (ENL^{new}) after implementing the strategy. The new economic risk levels (ECL^{new}) are then derived by bringing in Equation A based on the **I-ESE model**. Thereafter, the light pollution risk level (RL_1^{new}) is obtained by bringing into Equation 11.

Thus, we measured the potential impact in terms of the change in ENL^{new} after changing the strategy, while the change in risk level (RL^{new}) indicated the overall impact.

8 Case Study: Zhaotong and Guangzhou

To verify our I-ESE model and determine the most effective strategy, we chose two typical locations to apply our model: Zhaotong and Guangzhou.

8.1 Analysis of Effectiveness: Strategy I

With further implementation of strategy one, the value of ECL decreases as the prescribed time for enterprises to stop production and service t_{limit} is ahead. Based on the Logistic Model in our ESE Model (Model 1), the population of both cities shows a growing trend, thus ECL will rise continuously with the population growth. To show the impact of strategy intervention more intuitively, we use **d-value to represent the difference between risk levels with and without implementing strategy One** Based on data from China Statistical Yearbook[12] in 2021, we calculated the difference between the $ECLT^{new}$, ENL^{new} , SCL^{new} and RL^{new} value **with strategy one implemented** and the value of ECL, ENL, SCL and RL **without interventions**, as both of the d-values are shown in Figure 14 and Figure 15.

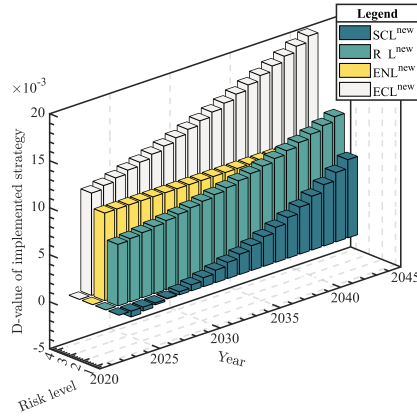


Figure 14: D-value of strategy one in GZ

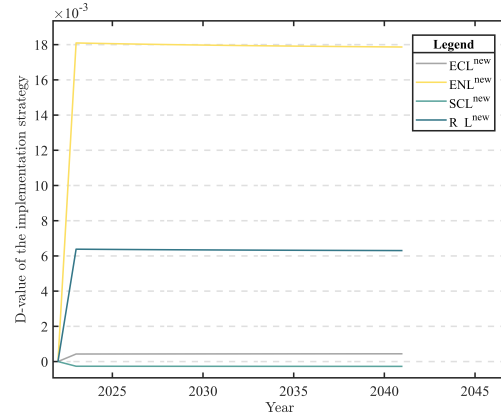


Figure 15: D-value of strategy one in ZT

It is obvious to see that the d-value of **SCL**, **ECL** and **RL** are increasing at a growing rate after 20 years of implementing strategy one in Guangzhou, reaching **0.0197 of d-value in ECL**, **0.0083 of d-value in SCL** and **0.0123 of d-value in RL**. The lines have an upward growth trend with a positive slope except for ENL, indicating that strategy one is relatively efficient in Guangzhou when it comes to social and economic aspects. We believe that the large population and huge economic volume of Guangzhou mainly lead to greater scope for eliminating light pollution risk levels.

When it comes to Zhaotong, more improvements can be seen in **ENL** as its d-value reaches **0.0178** in 2041 while impacts in **SCL** and **ECL** are relatively small with **0.0004 of d-value in ECL**. By the year 2023, the d-value in both reaches a relatively high level with **0.0181 in ENL** and **0.0063 in RL**. Since then, the d-value remains stable, representing the impacts of strategy one on three aspects in Zhaotong is stabilized. It is consistent with the fact that the impacts of strategy one on economic and social aspects are relatively not efficiently transmitted, due to its poor transportation and low technical level.

8.2 Analysis of Effectiveness: Strategy II

With more measures taken regarding the use and extension of smart devices, improvement in social aspects is reflected in the change in SCL^{new} after implementing the strategy. Thus, the value of ECL^{new} , ENL^{new} , SCL^{new} and RL^{new} and the original levels are shown in Figure 16.

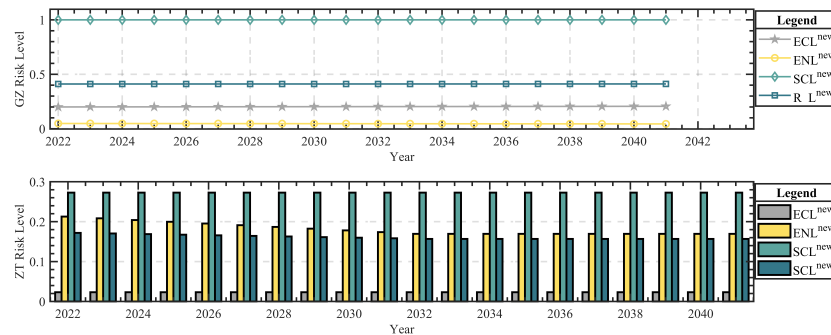


Figure 16: Impacts of Strategy Two

It can be seen that Guangzhou's **SCL** and **ECL** have been greatly reduced due to the intervention of strategy two, with ECL decreases **from 0.5264 in 2022 to 0.0440 in 2041** and SCL decreases **from 1 to 0.0229**, indicating that the intervention of smart lighting devices has greatly improved not only social aspects but also ecological aspects. Meanwhile, data in Zhaotong shows that in the year 2030, **SCL and RL** reaches its relatively low positions of **0.0100 and 0.0885** and stays stable since then, while other risk levels stay relatively the same. The results in Zhaotong are consistent with the reality that with the low residential density and travel frequency of residents are likely to reduce the impact of strategic interventions.

8.3 Analysis of Effectiveness: Strategy III

For strategy three, we determined a set of actions to transfer industries with serious light pollution to low-biological-density areas and the improvements will be mostly shown in the decrease of ECL in both cities.

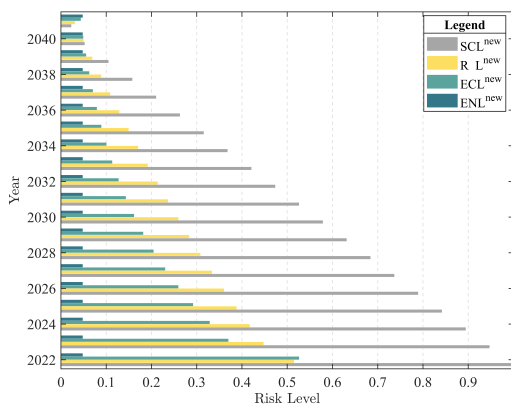


Figure 17: Impacts of Strategy Three in GZ

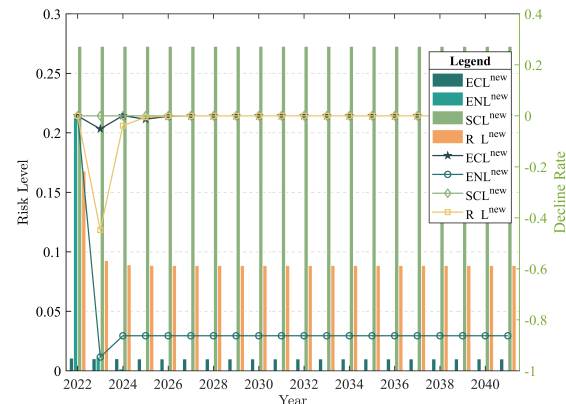


Figure 18: Impacts of Strategy Three in ZT

Figure 17 shows that with interventions regarding the protected area and relocation of specific industries, risk levels in Guangzhou show no obvious trend of change, indicating **strategy three has limited influence** on the light pollution risk level in Guangzhou, partly due to the relatively low biological density in Guangzhou. As for Zhaotong, the ENL has a **downward sloping trend** before it reaches its relatively low position **0.1695** in 2032 while others stay stable as well.

8.4 Selection of the Optimal Strategy

Based on the impact analysis and our I-ESE Model, we can now evaluate and compare the effectiveness between the three strategies, thus determining the optimal strategy for Guangzhou and Zhaotong. Instead of conducting a parallel comparison between different risk levels, we set up a **GE Cube** to more intuitively show **the changes of ECL, SCL, ENL and RI** before and after the implementation of the strategies. We set up the GE Cube of Guangzhou and Zhaotong in the three-dimensional rectangular coordinate system respectively, while **red dots** represent the risk level location with and without **strategy one**, **blue dots** represent the risk level location with and without **strategy two** and **yellow dots** for **strategy three**, shown in Figure 19 and 20.

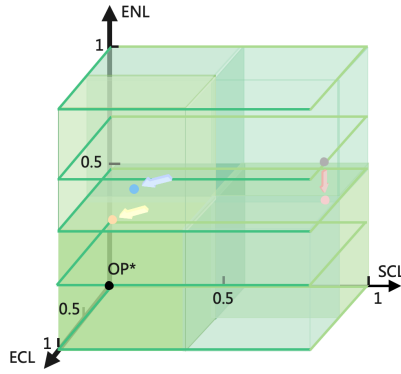


Figure 19: GE Cube of Guangzhou

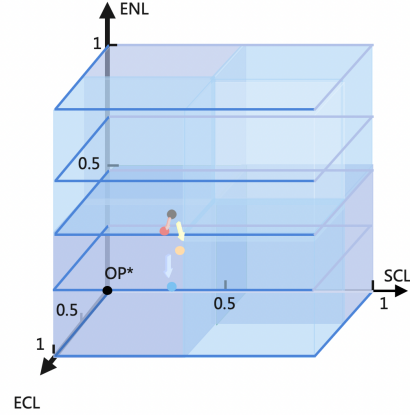


Figure 20: GE cube of Zhaotong

It is obvious to see that for Guangzhou, strategy two makes huge improvements in eliminating the negative aspects of light pollution while it makes a huge difference in Zhaotong as well. Comparing the difference between the two locations, we draw a GE Cube, where the x-axis represents ECL, y-axis represents SCL and z-axis represents ENL. OP^* represents the optimal point where the light pollution risks are minimized

Therefore, we propose the optimal strategies for the two cities respectively:

- **Guangzhou: Strategy II + Strategy I**

We choose strategy two - reducing the impact of light pollution on society - as the main strategy to implement and strategy one - reducing light intensity - as the secondary strategy. This inspired policy-makers in Guangzhou to promote the use of smart lighting devices without losing attention to economic considerations.

Once the strategies are implemented, positive changes will be seen in all aspects, especially in the reduction of SCL and ECL, which are evaluated in the analysis of the effectiveness and shown in Figure 19.

- **Zhaotong: Strategy II + Strategy III**

As for Zhaotong, we believe strategy Two should be the main strategy while the second strategy is strategy three - delimiting night protection areas. Attention should be paid especially in the use of smart lighting devices and refraining from light trespassing while the production and operation time of enterprises at night should be carefully limited as well.

Efforts will be seen in ecological and social aspects clearly while the general light pollution risk level would be lower as we analyzed in the former part just now.

9 Sensitivity analysis

Since the investment value used for light pollution varies greatly from place to place, we test the impact of the change of risk level of different investment amounts on RL . By adjusting $Cost$, we can directly or indirectly affect ECL , SCL and ENL through different strategies, thus affecting RL .

We set $Cost$ to increase by 50%, raw data and reduce by 50%, and plot our result of sensitivity analysis of cases in Guangzhou and Zhaotong. As can be seen from Figure 21 and Figure 22, the overall

trend of the risk level curve of the three strategies **remains unchanged** after changing the investment. This verifies the **sensitivity and robustness** of our model.

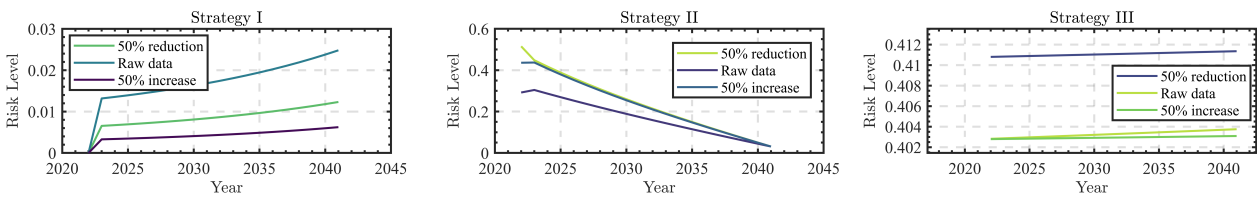


Figure 21: Sensitivity Analysis of Guangzhou

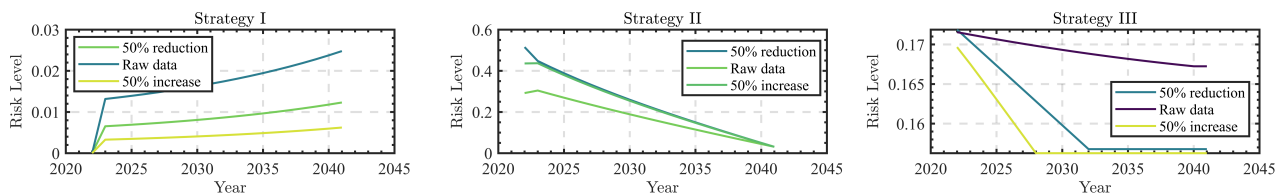


Figure 22: Sensitivity Analysis of Zhaotong

10 Strengths and Weaknesses

10.1 Strengths

- In our ESE Model, we design simulation algorithms to simulate the light pollution risk level in the economy, society and ecologic aspects of a certain location, which is close to real life and has certain reference significance.
- We have established a multi-level indicator system in our LPRA model, the first-level indicators cover a wide range, and the second-level indicators are more detailed, so the model we built is comprehensive and detailed.
- After simulation, we find that our model has significant progress on four main indicators(ENL, SCL, ECL and RL) after implementing the optimal strategy, indicating that our model is effective.
- We consider various indicators in economic, social and ecological aspects, making our model relatively comprehensive and objective.

10.2 Weaknesses

- Some of our parameters are based on a semi-educated guess because some data are unavailable.
- Even though our model considers the problem indicators extremely comprehensive, due to some indicator data missing, we can only choose the indicators that can be considered while the data is true and complete to analyze.

11 Strategy-promoting flyer

Turn off the **LIGHTS** Turn on the **STARS**

!!! Better Zhaotong with Smart lighting !!!

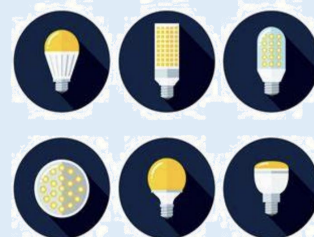


ACTION 1: Using covered bulbs

Streets and highways lighting must be properly designed such that too much light is not reflected in the sky. The solution for this is using covered bulbs that light facing downwards.

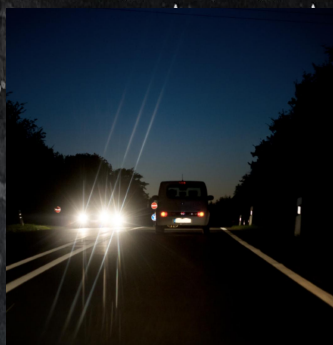
ACTION 2: Using LED lights

LEDs and compact fluorescents (CFLs) can help reduce energy use and protect the environment. Switching to LED lighting allows for reduced luminance without compromising visibility.



ACTION 3: Glare-free lighting

Dim lighting while driving at night is just enough for streets and highways already lit with artificial lighting. In areas without artificial lighting in Zhaotong, medium lighting is more than enough.



BETTER SLEEP



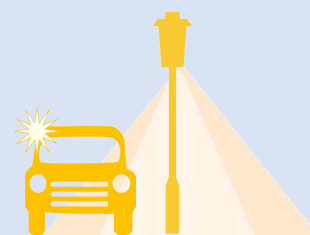
Reduce impact of
light trespassing

LIGHT POLLUTION RISK REDUCED

47.3%

After implementing
the actions

SAFER DRIVING



Eliminate serious glare
that reduce your vision

FOLLOW US & DO NOT MAKE ZHAOTONG BLINDED BY THE LIGHT

References

- [1] Gaston, K.J., Duffy, J.P., Gaston, S. et al. Human alteration of natural light cycles: causes and ecological consequences. *Oecologia* 176, 917–931 (2014).
- [2] https://en.wikipedia.org/wiki/Light_pollution
- [3] <https://education.nationalgeographic.org/resource/light-pollution/>
- [4] Terrel Gallaway, Reed N. Olsen, David M. Mitchell, The economics of global light pollution, *Ecological Economics*, Volume 69, Issue 3, 2010, Pages 658-665, ISSN 0921-8009
- [5] <https://mathworld.wolfram.com/LogisticEquation.html>
- [6] Grubisic M, Haim A, Bhusal P, et al. Light pollution, circadian photoreception, and melatonin in vertebrates[J]. *Sustainability*, 2019, 11:1-51.
- [7] <https://doi.org/10.14249/eia.2019.28.1.63>
- [8] <http://www.ldhyw.com/zcfg/csyjzmsjgf.asp>
- [9] <https://data.un.org>
- [10] <https://academic.oup.com/pnasnexus/article/1/2/pgac046/6569705>
- [11] <http://www.stats.gov.cn/tjsj/ndsj/>
- [12] <https://www.cma.gov.cn>
- [13] <http://www.inquinamentoluminoso.it/dmsp/index.html>
- [14] International Dark-Sky Association. *Practical Guide to Light Pollution*. Tucson, Arizona: International Dark-Sky Association, 2011.
- [15] <https://www.darksky.org/light-pollution/wildlife/>

Appendix A

Regions	RL	Regions	RL	Regions	RL	Regions	RL	Regions	RL	Regions	RL	Regions	RL	Regions	RL	Regions	RL	Regions	RL	Regions	RL
Beijing	0.473	Changchun	0.292	Huainan	0.254	Liaocheng	0.224	Shenzhen	0.619	Meishan	0.193	Dalian	0.288	Hangzhou	0.439	Qingdao	0.32	Xiangtan	0.203	Deyang	0.215
Tianjin	0.478	Jilin	0.287	Ma'anshan	0.229	Binzhou	0.241	Zhuhai	0.409	Yibin	0.197	Anshan	0.214	Ningbo	0.363	Zibo	0.262	Hengyang	0.215	Shenyang	0.296
Shijiazhuang	0.291	Siping	0.211	Huaibei	0.229	Heze	0.223	Shantou	0.333	Guang'an	0.189	Wushun	0.203	Wenzhou	0.299	Zaozhuang	0.245	Shaoyang	0.223	Suqian	0.218
Tangshan	0.275	Liaoyuan	0.187	Tongling	0.242	Zhengzhou	0.284	Foshan	0.448	Dazhou	0.204	Benxi	0.2	Jiaxing	0.401	Dongying	0.257	Yueyang	0.215	Jinan	0.302
Qinhuangdao	0.216	Tonghua	0.212	Anqing	0.199	Kaifeng	0.143	Jiangmen	0.253	Ya'an	0.199	Dandong	0.203	Huzhou	0.263	Yantai	0.247	Changde	0.219	Luzhou	0.194
Handan	0.247	Baishan	0.209	Huangshi	0.19	Luoyang	0.147	Zhanjiang	0.227	Bazhong	0.185	Jinzhou	0.211	Shaoxing	0.311	Weifang	0.253	Zhangjiagou	0.189	Zhuzhou	0.254
Xingtai	0.23	Songyuan	0.22	Chuzhou	0.21	Pingdingshan	0.159	Maoming	0.216	Ziyang	0.188	Yingkou	0.233	Jinhua	0.305	Jining	0.241	Yiyang	0.201	Haikou	0.279
Baoding	0.239	Baicheng	0.226	Fuyang	0.211	Anyang	0.156	Zhaoqing	0.23	Guiyang	0.206	Fuxin	0.198	Quzhou	0.212	Tai'an	0.225	Zhizhou	0.224	Panzhihua	0.206
Zhangjiakou	0.235	Harbin	0.359	Suzhou	0.205	Hebi	0.155	Huizhou	0.265	Liupanshan	0.128	Liaoyang	0.23	Taizhou	0.26	Weihai	0.259	Yongzhou	0.228		
Chengde	0.235	Qiqihar	0.291	Liu'an	0.206	Xinxiang	0.174	Meizhou	0.227	Zunyi	0.171	Panjin	0.246	Lishui	0.228	Rizhao	0.228	Huaihua	0.24		
Cangzhou	0.241	Jixi	0.229	Maozhou	0.199	Jiaozuo	0.174	Shanwei	0.217	Anshun	0.124	Tieling	0.209	Hefei	0.276	Laiwu	0.24	Loudi	0.198		
Langfang	0.281	Hegang	0.209	Chizhou	0.188	Puyang	0.149	Heyuan	0.221	Kunming	0.253	Changyuan	0.222	Wuhu	0.223	Linyi	0.239	Zigong	0.182		
Hengshui	0.213	Shuangyashan	0.241	Xuancheng	0.197	Xuchang	0.168	Yangjiang	0.211	Qujing	0.202	Huludao	0.204	Bengbu	0.199	Dezhou	0.224	Shaoguan	0.229		
Taiyuan	0.277	Daqing	0.251	Fuzhou	0.3	Luohe	0.156	Chengdu	0.431	Yuxi	0.16	Tianshui	0.052	Urumqi	0.12	Karamay	0.054	Zhongwei	0.057		
Datong	0.21	Yichun	0.264	Xiamen	0.398	Sanmenxia	0.126	Dongguan	0.534	Baoshan	0.162	Wuwei	0.057	Ulanqab	0.081	Taizhou	0.271	Shangrao	0.175		
Yangquan	0.197	Jiamusi	0.253	Putian	0.233	Nangyang	0.154	Zhongshan	0.448	Chongqing	0.526	Zhangye	0.061	Baiyin	0.055	Changsha	0.347	Suizhou	0.19		
Changzhi	0.214	Qitaihe	0.203	Sanming	0.25	Shangqiu	0.152	Chaozhou	0.239	Lijiang	0.163	pingliang	0.051	Yulin	0.146	Ankang	0.221	Xianning	0.196		
Jincheng	0.211	Mudanjiang	0.28	Quanzhou	0.278	Xinyang	0.133	Jieyang	0.234	Pu'er	0.215	Jiuquan	0.131	Baise	0.211	Shangluo	0.212	Huanggang	0.217		
Shouzhou	0.202	Heihe	0.291	Zhangzhou	0.242	Zhoukou	0.145	Yunfu	0.206	lincang	0.175	Qingyang	0.063	Hezhou	0.133	Lanzhou	0.127	Xiaogai	0.204		
Jinzhong	0.213	Suihua	0.265	Nanping	0.26	Zhumadian	0.137	Nanning	0.242	Xi'an	0.294	Dingxi	0.054	Hechi	0.201	Jiayuguan	0.058	Jingzhou	0.204		
Yuncheng	0.219	Shanghai	0.595	Longyan	0.241	Wuhan	0.312	Liuzhou	0.163	Tongcheng	0.189	Longnan	0.058	Bayannur	0.09	Zhenjiang	0.291	Fuzhou	0.156		
Xinzhou	0.21	Nanjing	0.339	Ningde	0.222	Huangshan	0.197	Guilin	0.188	Baoji	0.218	Xining	0.118	Hulunbuir	0.351	Yangzhou	0.262	Yichun	0.162		
Linfen	0.226	Wuxi	0.37	Nanchang	0.219	Shiyan	0.219	Wuzhou	0.14	Xieyang	0.226	Yinchuan	0.171	Sanyang	0.238	Yancheng	0.231	Ji'an	0.176		
Lvliang	0.218	Xuzhou	0.239	Jingdezhen	0.121	Yichang	0.219	Beihai	0.143	Weian	0.227	Shizuishan	0.067	Chifeng	0.162	Lianyungang	0.236	Yingtian	0.121		
Huhehot	0.139	Changzhou	0.311	Pingxiang	0.122	Xiangyang	0.216	Fangcheng	0.122	Yan'an	0.276	Wuzhong	0.071	Tongliao	0.117	Huai'an	0.222	Ganzhou	0.226		
Baotou	0.141	Suzhou	0.561	Jiujiang	0.161	E'zhou	0.212	Qinzhou	0.138	Hanzhong	0.232	Guyuan	0.049	Chongzuo	0.153	Leshan	0.2	Suining	0.196		
Wuhai	0.156	Nantong	0.268	Xinyu	0.127	Jingmen	0.196	Guigang	0.14	Hanlin	0.286	Zhongwei	0.057	Nanchong	0.2	Neijiang	0.189	Guangyuan	0.202		