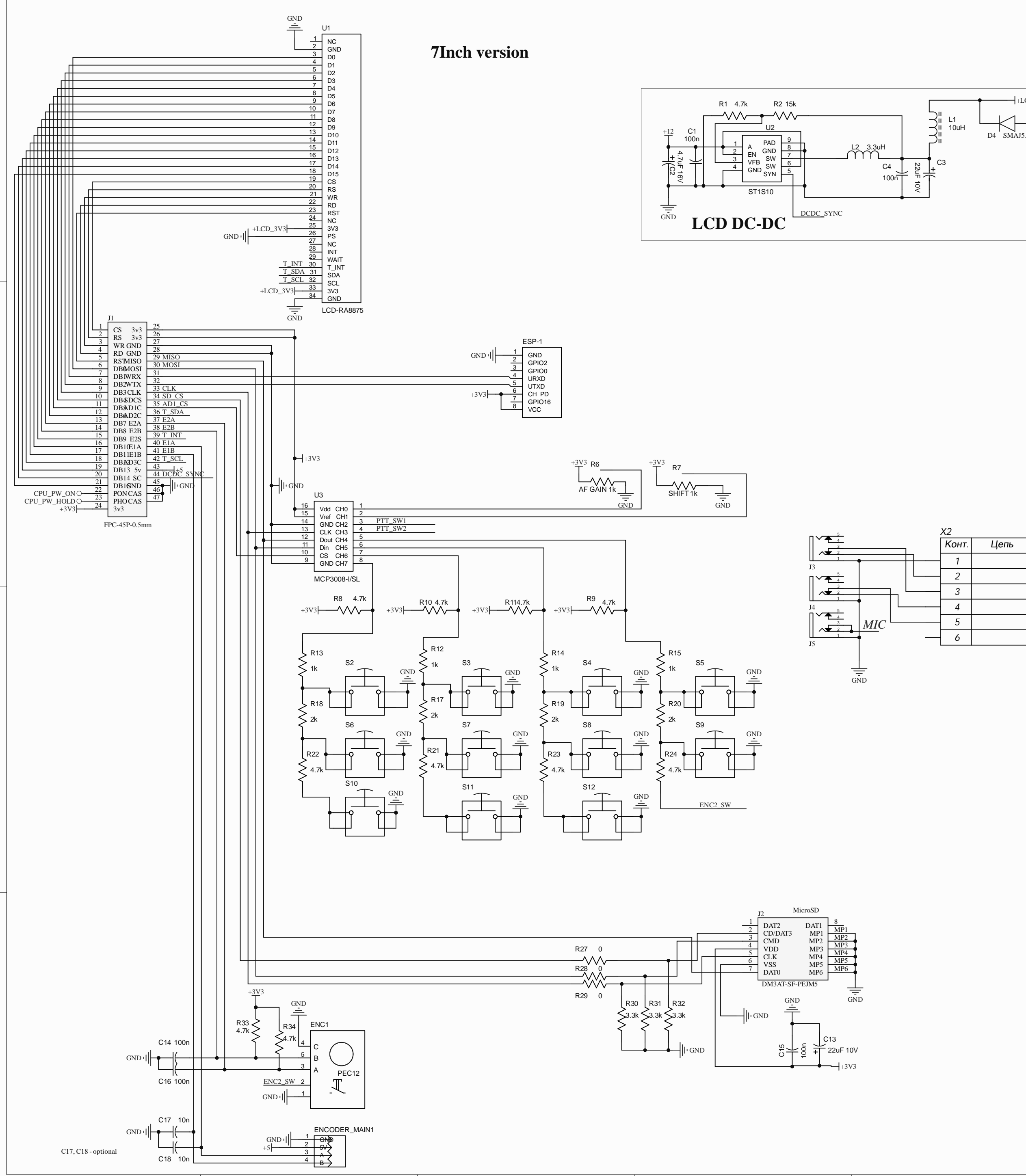
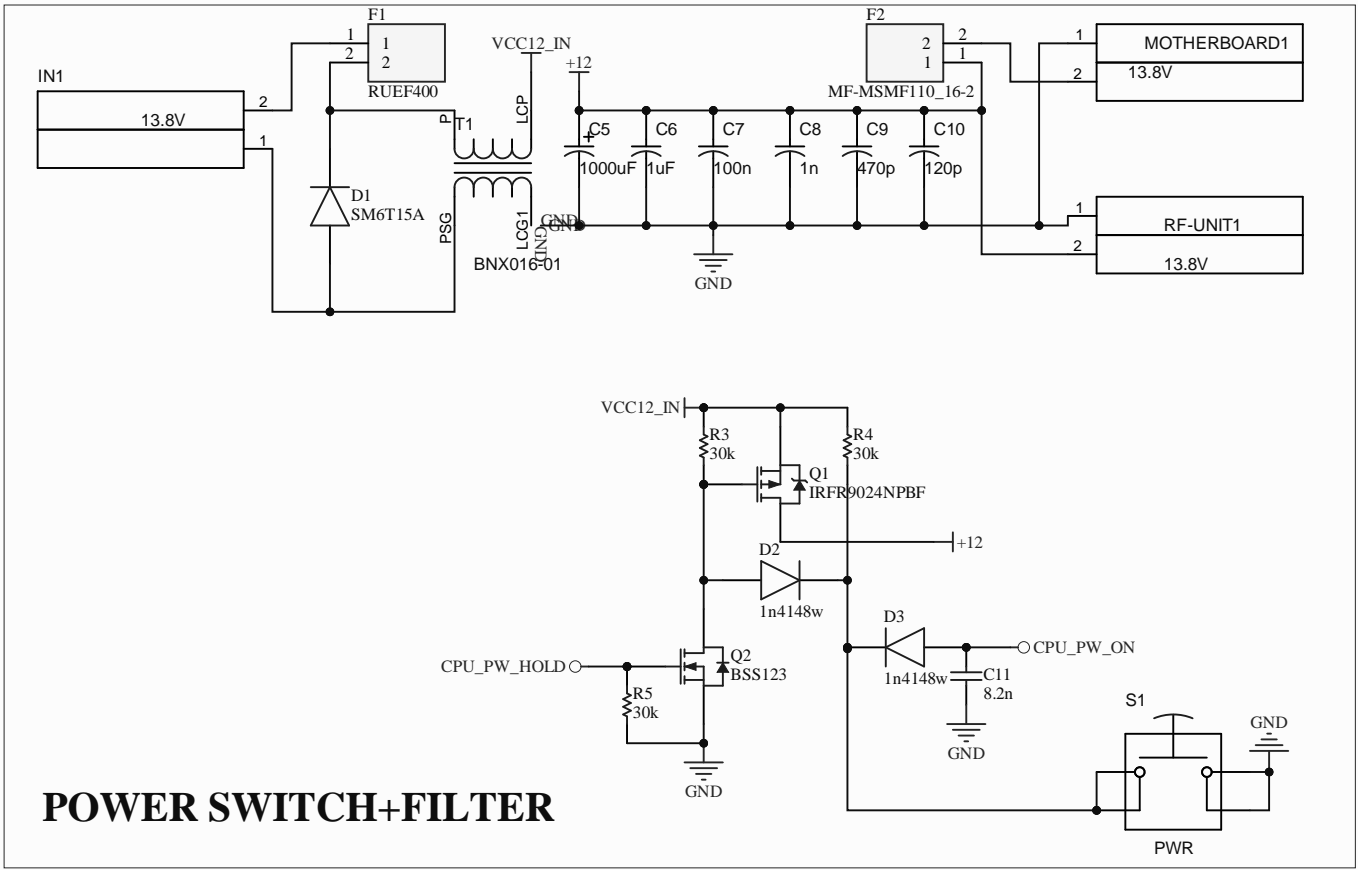
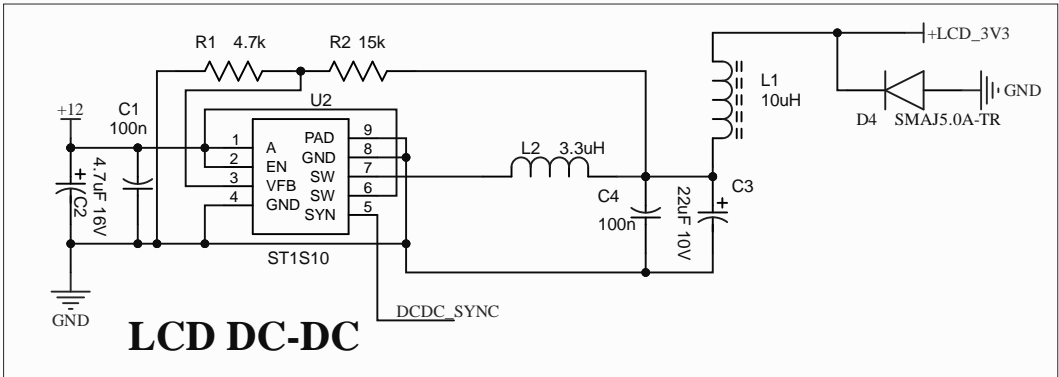
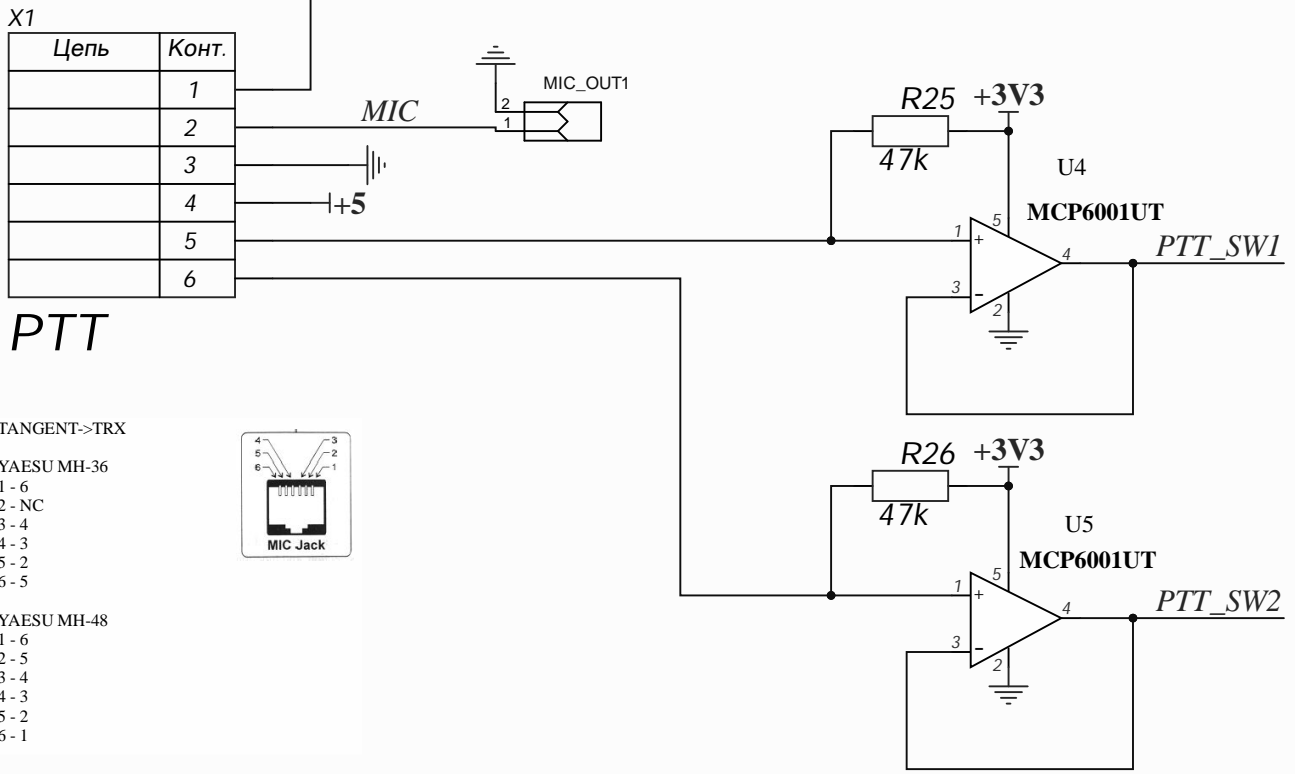


7Inch version



TANGENT



Comment	Description	Designator	Footprint	Quantity
0	RES_0805	R27, R28, R29	RES_0805	3
0.1		C12	CH0805C	1
1k	RES_0805	R12, R13, R14, R15	RES_0805	4
1n	CAP_1206	C8	CAP_1206	1
1n4148w	Diode	D2, D3	SOD3716X135N	2
1uF	CAP_1206	C6	CAP_1206	1
2k	RES_0805	R17, R18, R19, R20	RES_0805	4
3.3k	RES_0805	R30, R31, R32	RES_0805	3
3.3uH	IND_1812	L2	IND_1812	1
4.7k	RES_0805	R1, R8, R9, R10, R11, R21, R22, R23, R24, R33, R34	RES_0805	11
4.7uF 16V	CAPAE_6.6x6.6h5.4	C2	CAPAE_6.6x6.6h5.4	1
8.2n	CAP_1206	C11	CAPC2013X94X50LL20 T25	1
10n	CAP_0805	C17, C18	CAP_0805	2
10uH	Inductor	L1	IND_FERRITE_CORE	1
15k	RES_0805	R2	RES_0805	1
22uF 10V	CAPAE_4.3x4.3h5.4	C3	CAPAE_4.3x4.3h5.4	1
22uF 10V	EEFEC_sizeB	C13	EEFEC_sizeB	1
30k	RES_0805	R3, R4, R5	RESC2013X60X40NL20 T25	3
47k		R25	CH0805R	1
47k		R26	CH0805C	1
100		R16	CH0805R	1
100n	CAP_0805	C1, C4, C14, C15, C16	CAP_0805	5
100n	CAP_1206	C7	CAP_1206	1
120p	CAP_1206	C10	CAP_1206	1
470p	CAP_1206	C9	CAP_1206	1
1000uF	CAP250RP	C5	CAP250RP	1
BNX016-01	BNX016-01	T1	TRANSF_ICORE	1
BSS123	N-Channel Logic Level Enhancement Mode Field Effect Transistor, 1.7 V, -55 to 150 degC, 3-Pin SOT-23, RoHS, Tape and Reel	Q2	FAIR-SOT23-3_V	1
DM3AT-SF-PEJM5	Connector	J2	DM3ATSFPEJM5	1
ESP-01 ESP8266	ESP-01 ESP8266	ESP-1	ESP-01 ESP8266	1
FPC-45P-0.5mm	Connector	J1	FH12S45S05SH60	1
IRFR9024NPBF	IRFR9024NPBF, Транзистор, P-канал 55B 11A	Q1	ONSC-DPAK-3-369C- 01_V	1
JX2	JX2	IN1, MOTHERBOARD1, RF- UNIT1	JX2	3
LCD-RA8875	LCD-RA8875	U1	LCD-RA8875	1
MCP3008-I/SL	MCP3008-I/SL	U3	MCP3008-I/SL	1
MCP6001UT		U4, U5	SOT23-5	2
MF-MSMF110_16-2	Fuse	F2	FUSC4632X85N	1
MIC_OUT	51022-0200	MIC_OUT1	51022-0200	1
OPTICAL ENCODER	OPTICAL ENCODER	ENCODER_MAIN1	644456-4	1
PEC12	PEC12	ENC1	PEC12	1
PJ-3,5		J3, J4, J5	Audio-PJ-392	3
PTS645SK50LFS	PTS645SK50LFS	S1, S2, S3, S4, S5, S6, S7, S8, S9, S10, S11, S12	PTS645SK50LFS	12
PTT		X1, X2	CON: PLS-6	2
PTT_OUT	51022-0200	PTT_OUT1	51022-0200	1
ptv09a-4225f-b102	Adjustable Resistor PTV09	R6, R7	PTV09	2
RUEF400	Fuse	F1	RUEF400	1
SM6T15A	Diode	D1	SMBJ36CATR	1
SMAJ5.0A-TR	Diode	D4	SMBJ36CATR	1
ST1S10	ST1S10	U2	ST1S10	1