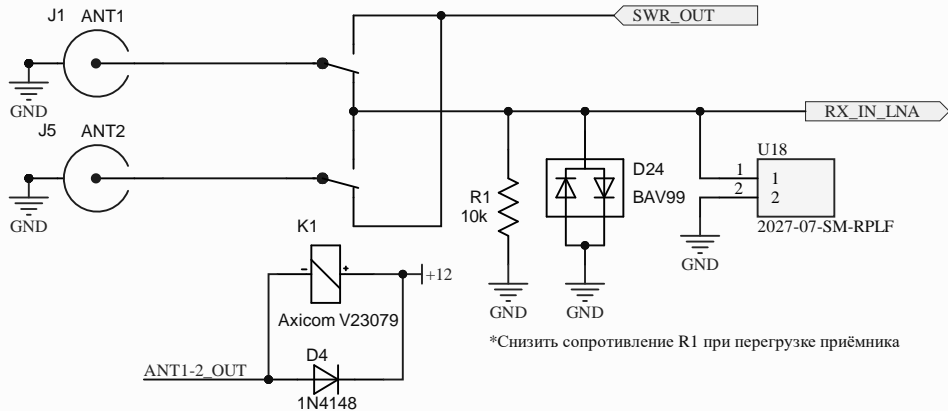
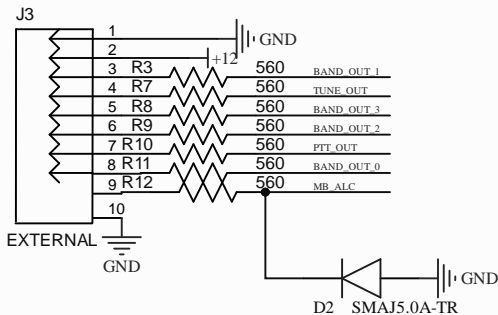
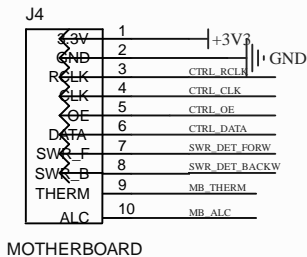
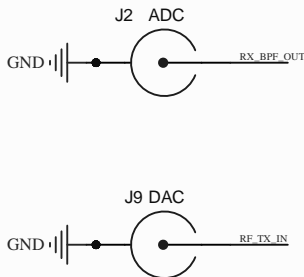
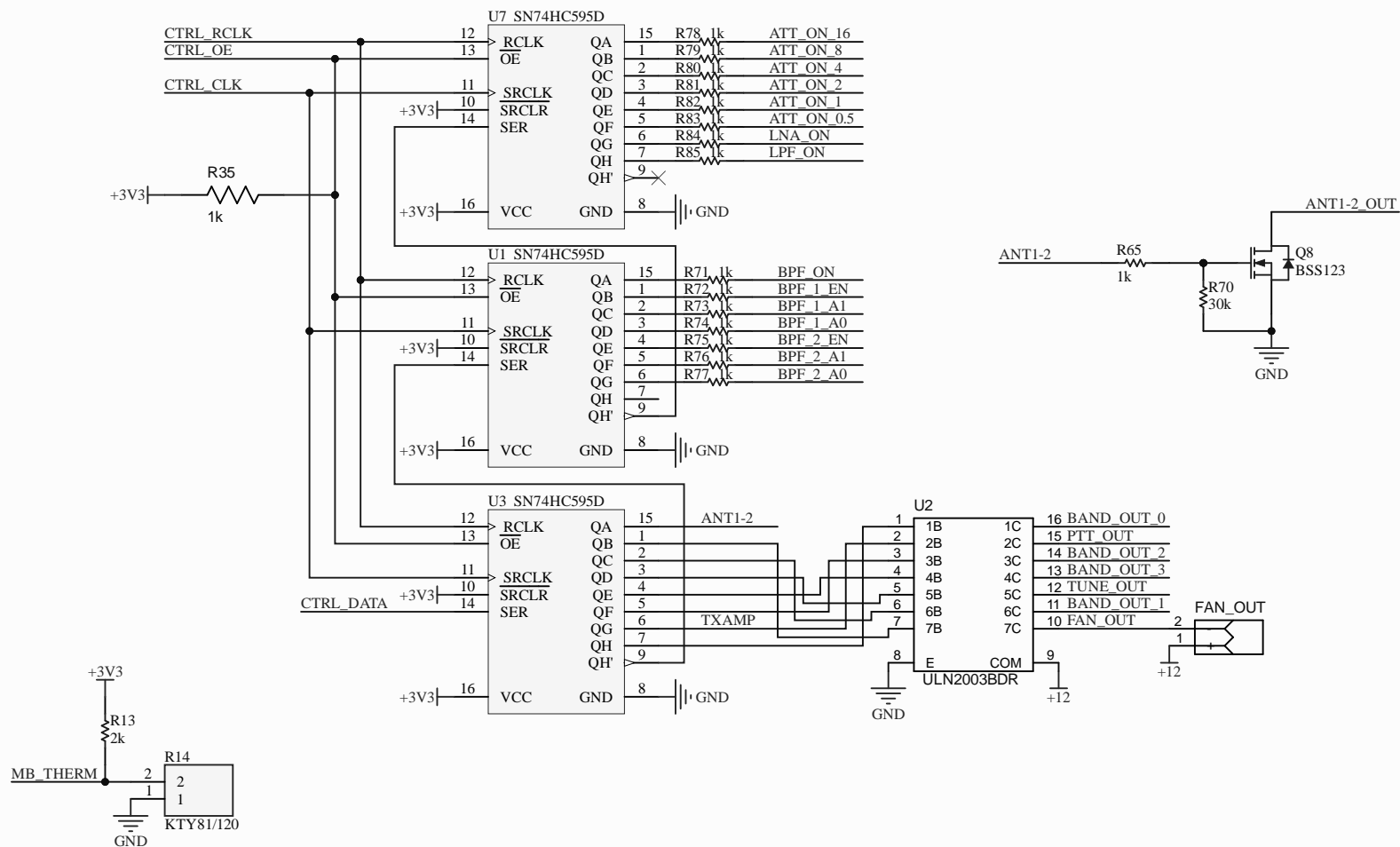


TXRX_COMUTATOR



CONN



Title **CONTROL**

Size: A4

Number: 15

Revision: 2.0

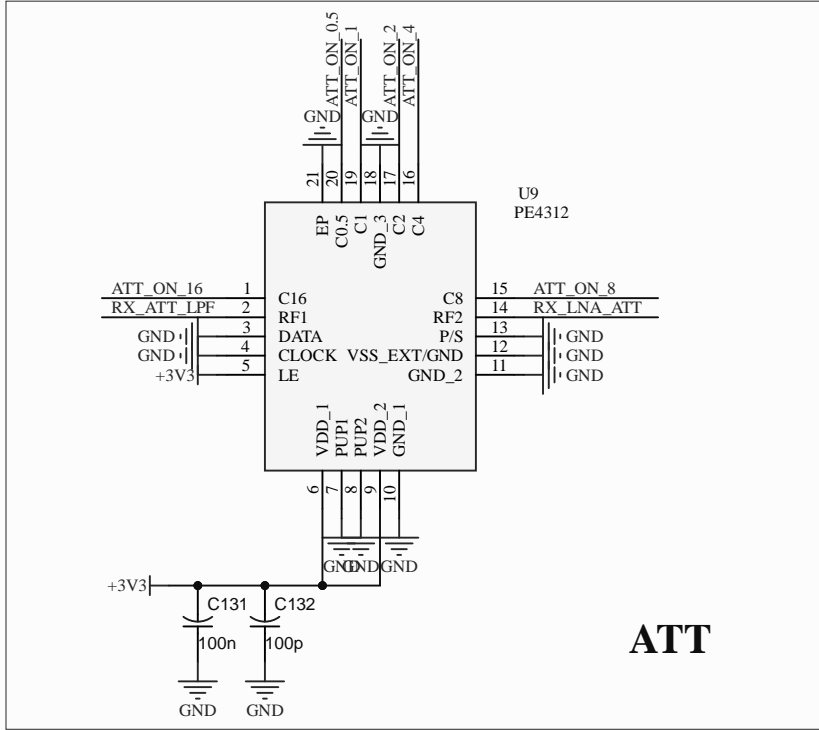
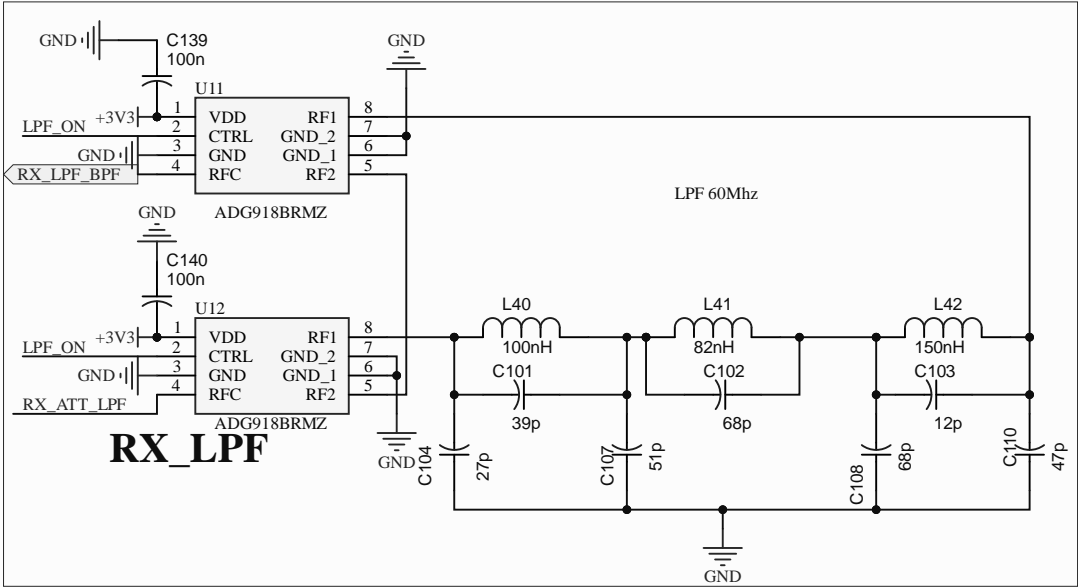
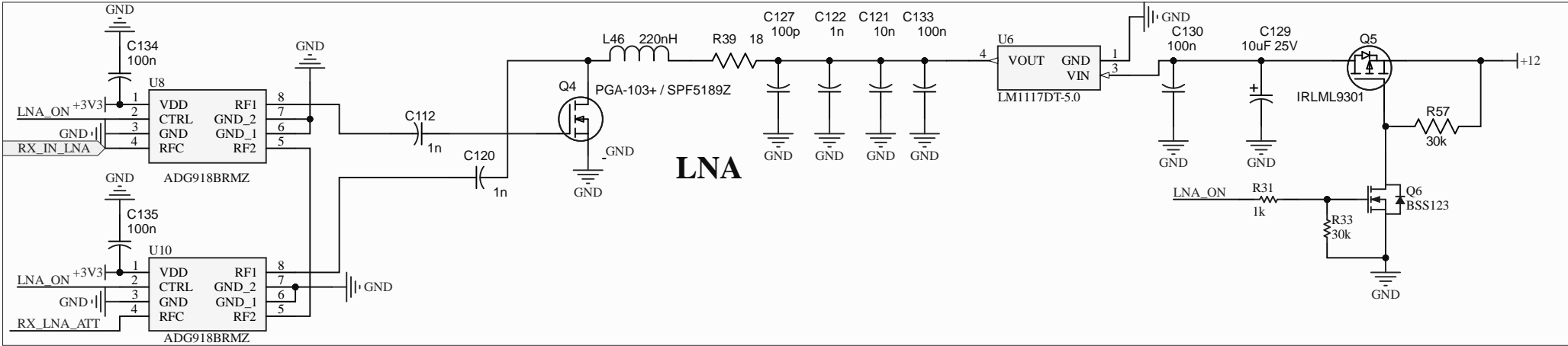
Date: 30.10.2022

Time: 0:29:16

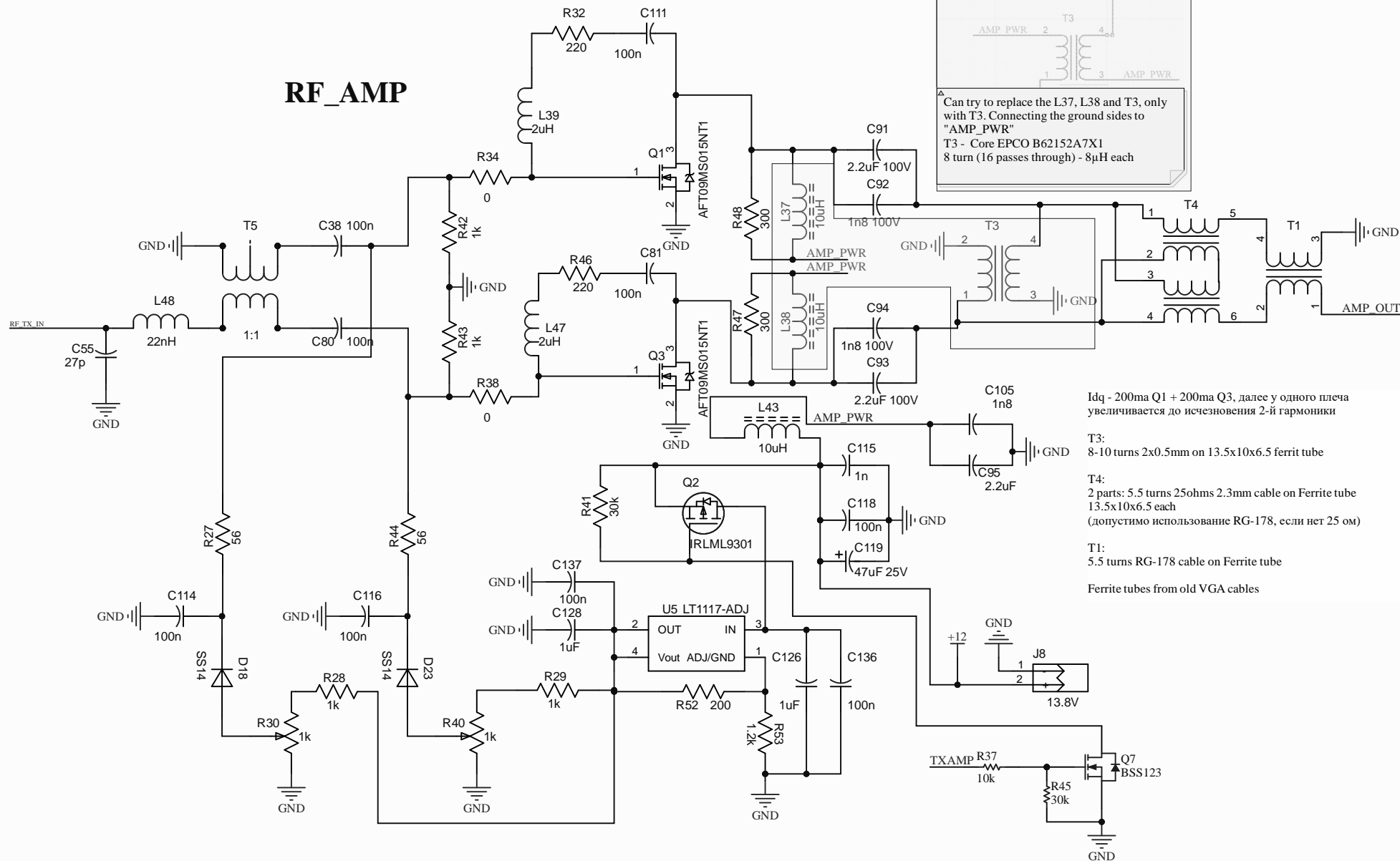
Sheet 15 of 18

File: C:\Dropbox\Develop\Projects\WOLF\Schematic\Wolf\Altium_Designer\RF-UNIT-QRP_20W\CONTROL.SchDoc





RF_AMP



Can try to replace the L37, L38 and T3, only with T3. Connecting the ground sides to "AMP_PWR"
 T3 - Core EPCO B62152A7X1
 8 turn (16 passes through) - 8μH each

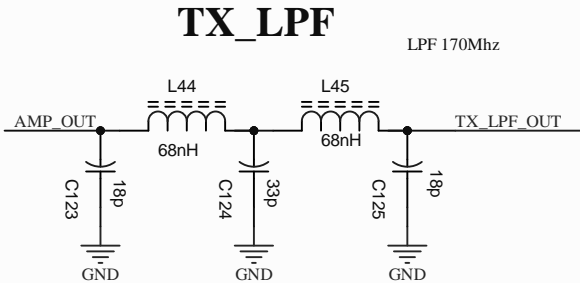
Idq - 200ma Q1 + 200ma Q3, далее у одного плеча увеличивается до исчезновения 2-й гармоники

T3:
 8-10 turns 2x0.5mm on 13.5x10x6.5 ferrit tube

T4:
 2 parts: 5.5 turns 25ohms 2.3mm cable on Ferrite tube 13.5x10x6.5 each
 (допустимо использование RG-178, если нет 25 ом)

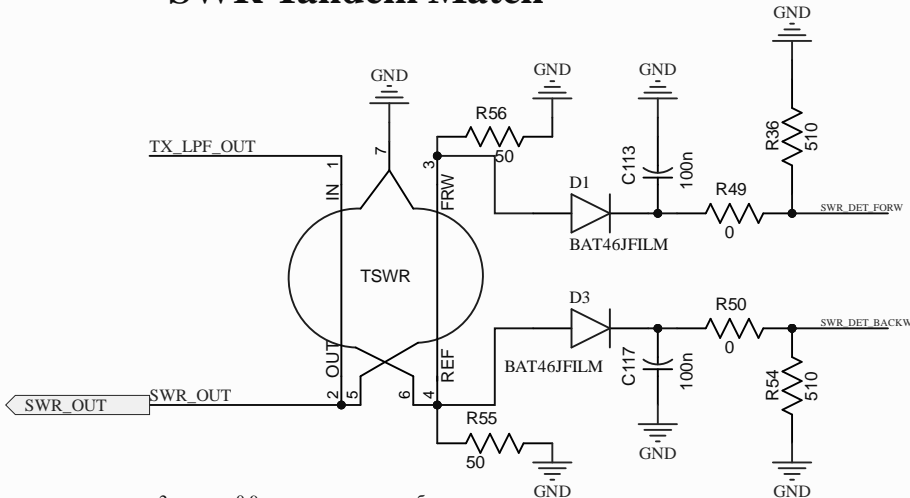
T1:
 5.5 turns RG-178 cable on Ferrite tube

Ferrite tubes from old VGA cables



Катушки намотаны проводом 0.5мм на оправке диаметром 5мм, 3.5 витка

SWR Tandem Match



2 провода 0.9мм пропущено через бинокль
по диагонали пропущено и намотано по 10 витков 0.5мм