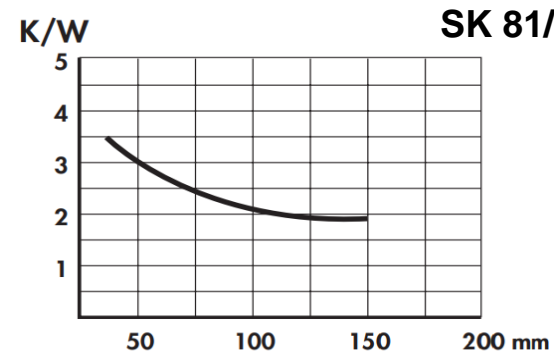
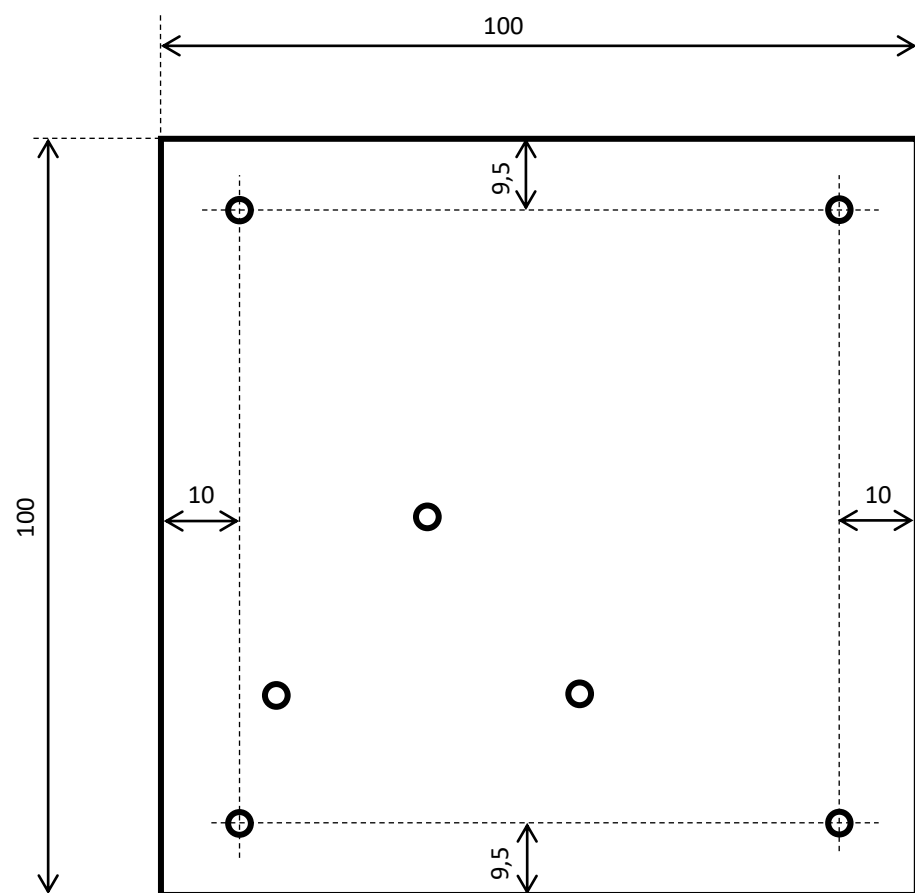


SK 81/100/SA – 100 x 100 mm, Alu, 2,2 K/W
SK 81/75/SA – 100 x 75 mm, Alu, 2,5 K/W



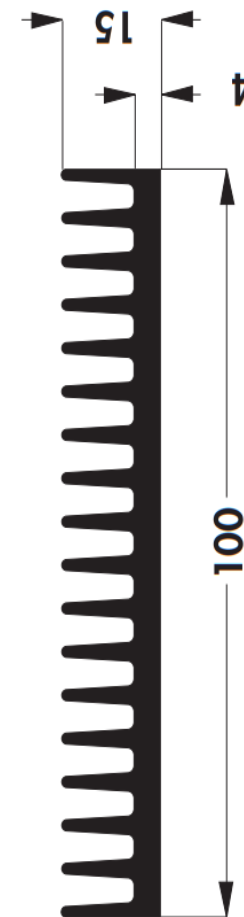
SK 81/100/SA drill dimensions



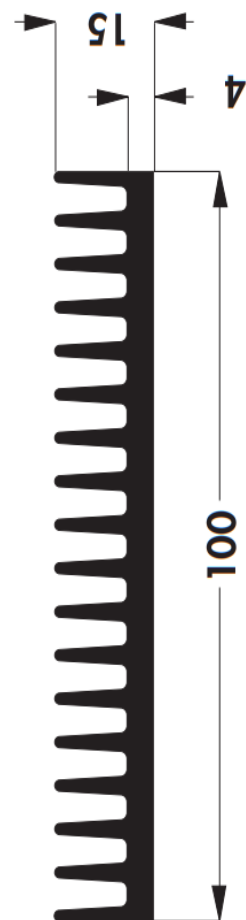
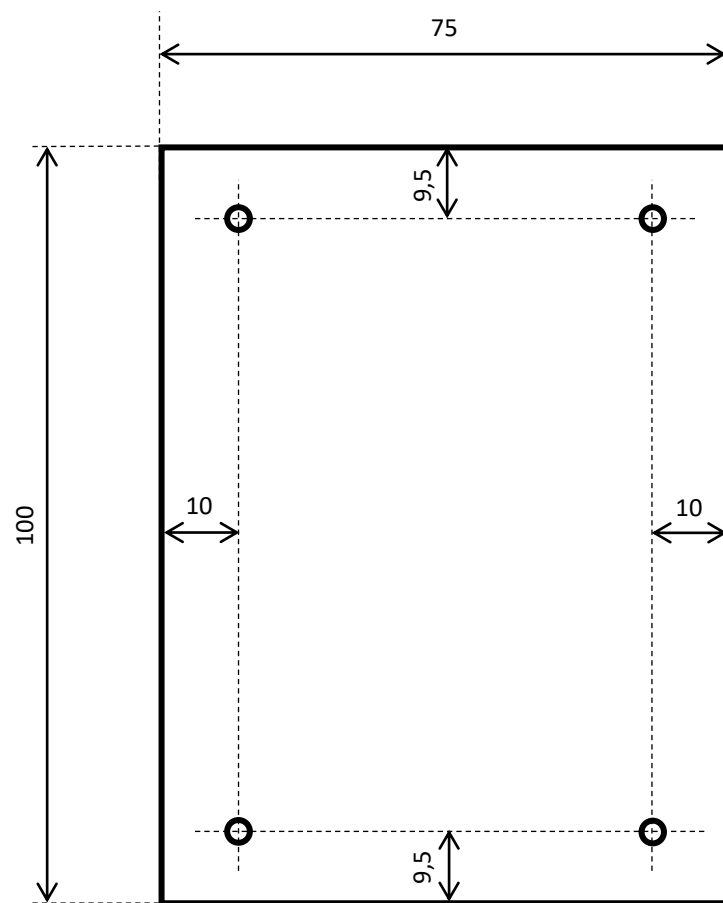
Technical drawing of a square plate with dimensions and hole locations. The plate has a total width of 100 and a total height of 100. The drawing shows the following dimensions and hole locations:

- Overall width: 100
- Overall height: 100
- Distance from left edge to the first vertical centerline: 15
- Distance from left edge to the second vertical centerline: 55
- Distance from left edge to the third vertical centerline: 35
- Distance from bottom edge to the first horizontal centerline: 26,5
- Distance from bottom edge to the second horizontal centerline: 50
- Distance from bottom edge to the third horizontal centerline: 50
- There are 7 holes in total, labeled "7x M3".

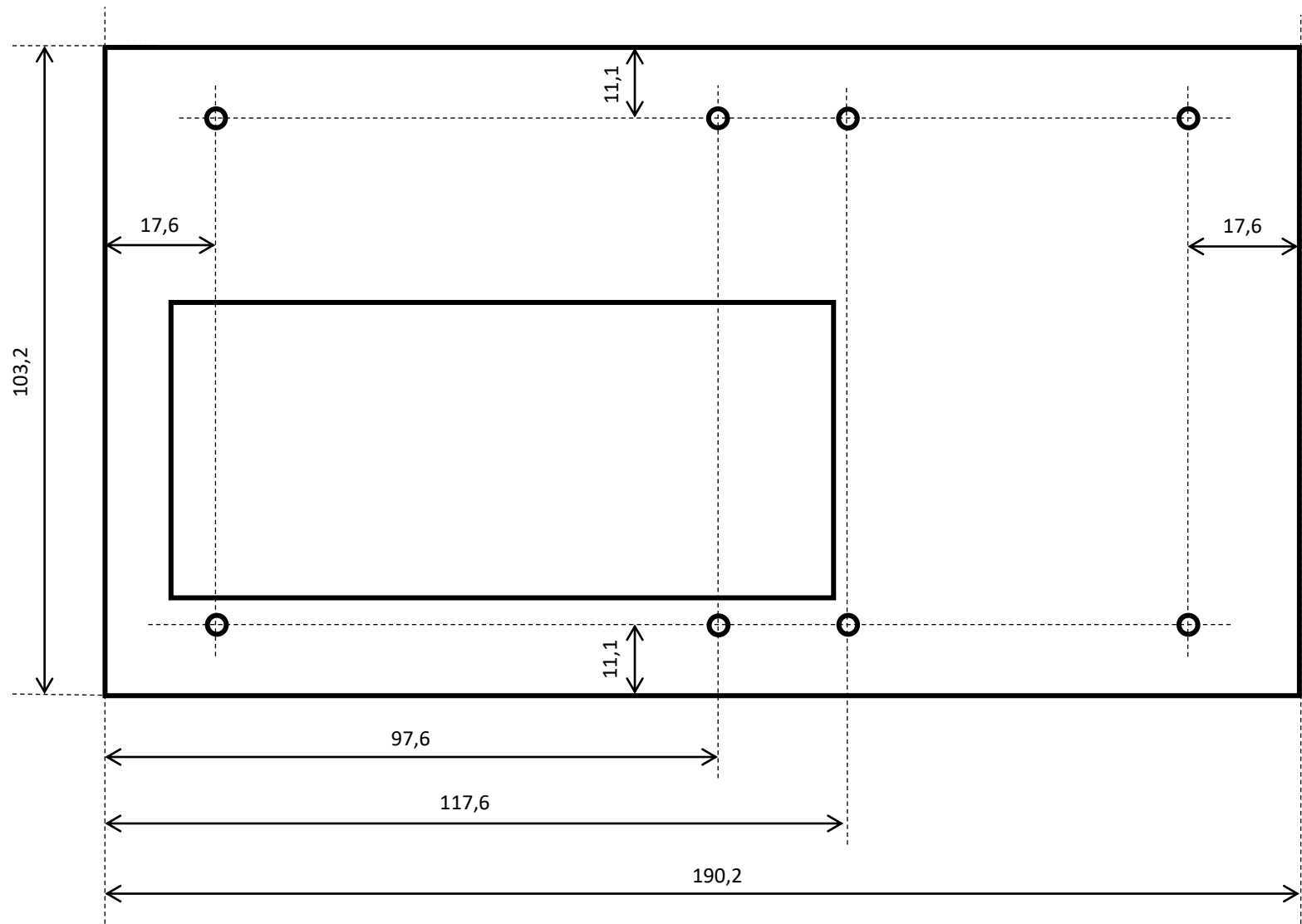
Dimensions 2



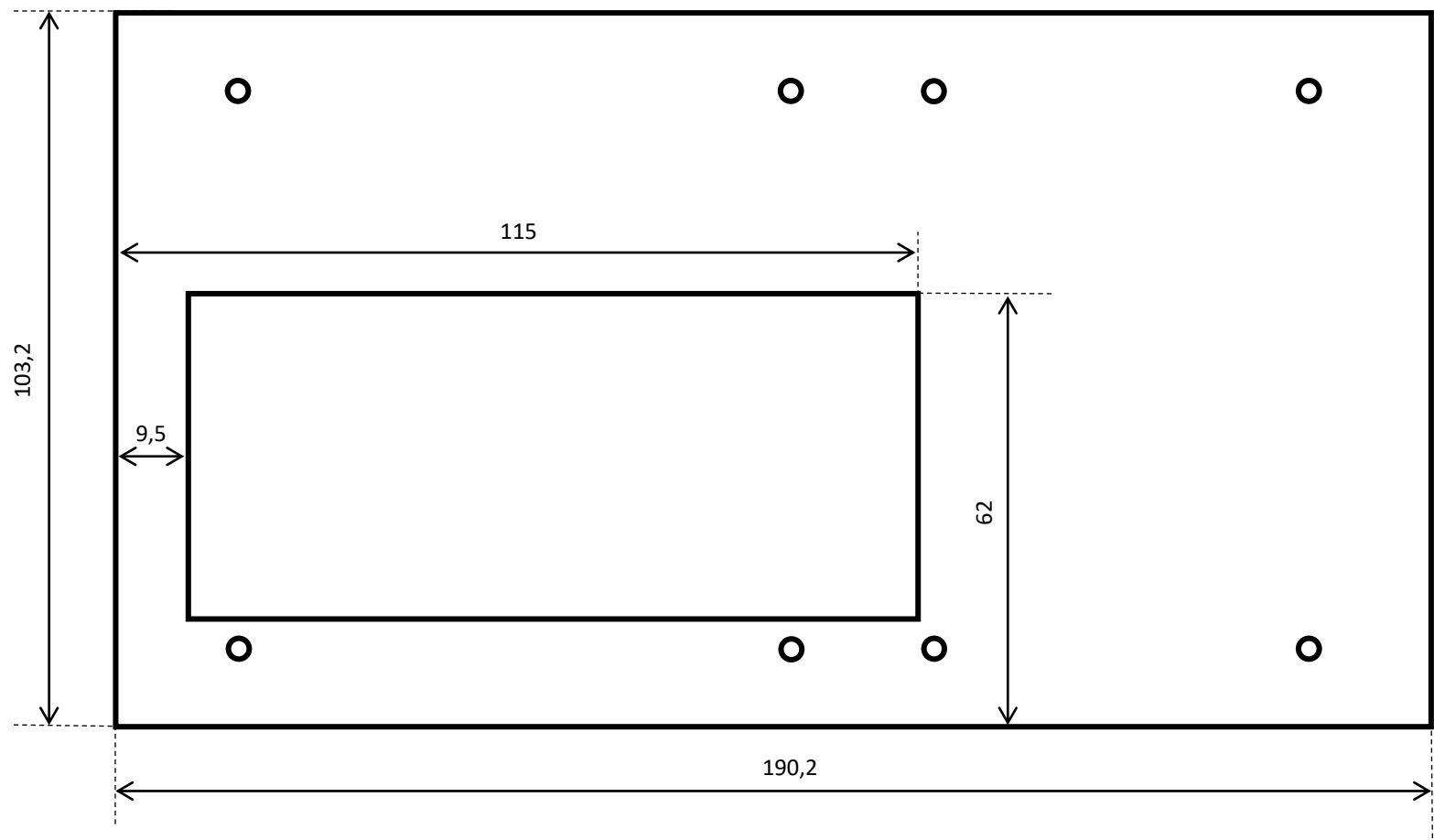
SK 81/75/SA drill dimensions



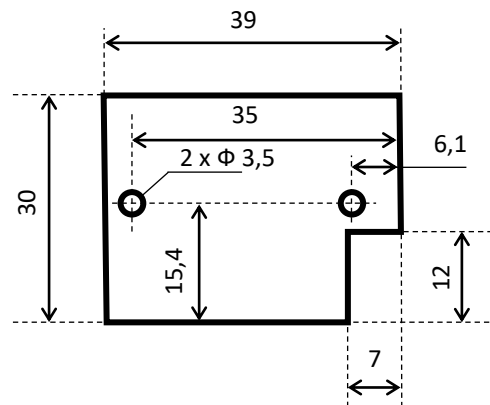
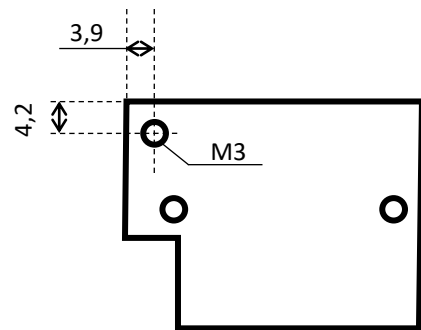
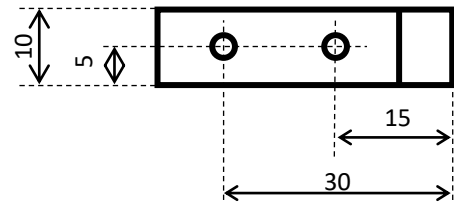
Bottom cover
(Dimensions 1)



Bottom cover
(Dimensions 2)



Copper block 1 (TIM)
- Size 39x30x10



Copper block 1 (TIM)

- Size 39x20x8

