

Professional Issue 402
Recovery
IN PRINT, DIGITAL AND LIVE EVENTS



RECOVERY INDUSTRY HONoured AT THE NTDA AWARDS

New J&J truck for Bakers Recovery



Tow Show on the Move



Big Expectations from Roger Dyson



THE INDUSTRY'S NUMBER ONE INDEPENDENT MAGAZINE



KS INTERNATIONAL LTD.

Japanese 4x4 & Truck Parts



Tel : +44(0)20 8842 7567

Fax : +44(0)20 8842 7568



sales@ks-international.com

**LARGEST INDEPENDENT STOCKIST OF
GENUINE & AFTERMARKET TRUCK PARTS FOR
ISUZU & MITSUBISHI**

Axle
Accessories
Body parts
Cooling & heating
Brakes

More than 30000 parts
ready in stock
for immediate delivery!!

Clutch
Engine
Exhaust
Filters
Steering
Suspension
Transmission



www.ks-international.com

Unit 6 Sperrin Business Centre Stonefield Way, Ruislip Middlesex, HA4 0BG

TIPNLIFT

THE NATIONS BIGGEST SUPPLIER OF TOTAL LIFT VEHICLES



WWW.TIPNLIFT.CO.UK - 01473 747222 - INFO@TIPNLIFT.CO.UK

Professional Issue 402 Recovery

IN PRINT, DIGITAL AND LIVE EVENTS

Welcome to the latest issue of Professional Recovery Magazine

I must start the magazine with a huge congratulations to Richard Goddard and Derek Firminger for being honoured by the NTDA at their recent Awards Dinner. NTDA Chief Executive Stefan Hay presented them both with the prestigious Round and Black award in recognition of their work on safety and raising standards. Fully deserved and well done to both.

We have some big Tow Show news announced in this issue.

After over 20 years in Telford we're on the move. I'll let Nick provide you with all the details on page 4, but it's an exciting time ahead with Stoneleigh a perfect venue.

Enjoy the magazine.



@recoveryeditor

Professional Recovery

is published by: **Kelsey Media**, The Granary, Downs Court, Yalding Hill, Yalding, Maidstone, Kent ME18 6AL

Call us today on: **01952 455334**

CONTACTS:

Editor - PAUL GREGORY paul.gregory@kelsey.co.uk

ADVERTISEMENT SALES

Talk Media Sales

Annie Mulcrone Investment Manager - annie@talk-media.uk

Tel: 01732 904511

ADVERTISING PRODUCTION

Talk Media Ltd - production@talk-media.uk

Guest writers

DEREK FIRMINGER

MANAGEMENT

Chief Executive: Steve Wright

Chief Operating Officer: Phil Weeden

Managing Director: Kevin McCormick

Operations Director: Gill Lambert

Retail Director: Steve Brown

Print Production Manager: Georgina Harris

Print Production Controllers: Kelly Orriss and Hayley Brown

Senior Subs Marketing Manager: Dave Sage

CUSTOMER SERVICE AND SUBSCRIPTION POSTAL ADDRESS:

To buy a subscription or order back copies our customer service

team are contactable Monday to Friday, 9am to 5pm:

01959 543 747 - cs@kelsey.co.uk

Find current subscription offers on our website -

shop.kelsey.co.uk/recovery

Already a subscriber, manage your subscription online -

shop.kelsey.co.uk/myaccount

Professional Recovery Customer Service Team, Kelsey Media,

The Granary, Downs Court, Yalding Hill, Yalding,

Maidstone, Kent, ME18 6AL

Kelsey Media 2024 © all rights reserved. Kelsey Media is a trading name of Kelsey Publishing Ltd. Reproduction in whole or in part is forbidden except with permission in writing from the publishers. Note to contributors: articles submitted for consideration by the editor must be the original work of the author and not previously published. Where photographs are included, which are not the property of the contributor, permission to reproduce them must have been obtained from the owner of the copyright. The editor cannot guarantee a personal response to all letters and emails received. The views expressed in the magazine are not necessarily those of the Editor or the Publisher. Kelsey Publishing Ltd accepts no liability for products and services offered by third parties.

Kelsey Media takes your personal data very seriously. For more information of our privacy policy, please visit [Kelsey Media takes your personal data very seriously. For more information of our privacy policy, please visit https://www.kelsey.co.uk/privacy-policy/](https://www.kelsey.co.uk/privacy-policy/) If at any point you have any queries regarding Kelsey's data policy you can email our Data Protection Officer at dpo@kelsey.co.uk.

 **KELSEY**media

INSIDE

4 Tow Show on the Move



14 Recovery industry honoured at the NTDA Awards



24 Big Expectations from Roger Dyson



32 New J&J truck for Bakers Recovery



TOW SHOW MOVES TO STONELEIGH PARK

Having enjoyed a long and positive tenure for the Tow Show at the Telford International Centre, we are hugely excited to announce from 2025 the event will be taking up residence at a new venue.

Following extensive research and due consideration with alternative locations, the 2025 Tow Show will be taking place at Stoneleigh Park on Wednesday 1st and Thursday 2nd of October.

Our aim is always to develop and grow the show for our visitors, trying to maintain competitive exhibition rates, plus keeping the event totally independent for the roadside assistance and vehicle recovery sector.

The move to Stoneleigh Park will allow us, we believe the flexibility to further enhance the core features of the show, whilst introducing some new ideas and offering potential different

display areas to help meet the exhibitor demand.

The show will remain free car parking and entry for visitors, with a central location that we hope will also be appealing to new visitors and some who possibly haven't been to the show for a couple of years.

We will be hosting venue visits for our exhibitors to get a taste of what Stoneleigh Park has to offer and to view the exhibition facilities.

Following this announcement there will be lots of information available shortly that we will be sharing including floor plans, details for hotel arrangements, and a full venue guide.

On behalf of all the Tow Show team we would like to say a huge thanks to all visitors, sponsors, and exhibitors past and present, who have supported the event during its residence at the TIC.

In the meantime, we look forward to



welcoming everyone to the next Tow Show at our new location, Stoneleigh Park, on Wednesday 1st and Thursday 2nd of October 2025.

TOW SHOW SUCCESS FOR APEX RMS

Always keen to demo their ground-breaking software, the Tow Show was the perfect place for Apex to greet clients old and new.

Meeting face-to-face

Apex thrives on customer connections, whether it's clubs, work providers, large operators or one-man bands. Not only that, team members within Software Development, Customer Support and Marketing, soon found that meeting their regular customers 'in the flesh' was a boost to positive and effective communication. It was also a great opportunity to receive feedback, answer questions and listen to new ideas for the software.

Apex connects work

Apex RMS links vital information from start to finish, connects everyone in the recovery chain and includes modules such as job updates, fleet management, auditing and reporting and a booking portal. Some bigger clubs, such as the RAC, even advised businesses to request a demo because to receive work they literally needed to have Apex. Perhaps that's why ten new customers were welcomed to the Apex family during the event, including CLP Fleet Services Ltd, NCS Repairs and Pro Rescue and Recovery. "We should have done it earlier," was a phrase repeated many times, leaving the team feeling rightly proud.



Positive feedback

The Apex stand was frequently visited by satisfied customers who wanted to deliver praise in person. "It is always a pleasure to receive positive feedback about our product, and especially the team," says Apex's CEO JP Dekker. "We always try to go above and beyond to help our customers with any questions they may have." For Nicky Fenton, Apex's Marketing Manager, the comments also demonstrated the power of the right software to overturn how a recovery business is run. "People described how RMS had greatly improved their business efficiency," she says, "and that the Apex support team was accessible and helpful."

Planning for the future

The potential for technology to boost

performance within transport and recovery is a factor that Apex takes seriously. Responding to feedback, they build and adapt their RMS software to ensure that it meets both current and future needs. JP Dekker was delighted with clients' enthusiasm for what Apex software might achieve next. "We had great conversations about new features, such as a backload portal or data analysis," he recalls. "And also when the RMS app was coming to iPhone." (The answer to that is an estimate of within 12 months for RMS Lite, and within 18 months for full RMS.)

Watch this space!



SUPERWINCH®

ProLux



WELCOME OFFER

Tiger Shark 9500
code no.: 649115
traction force: 4,3 t
hole pattern: 254 x 114 mm
voltage: 12 V



UK stock available



CONTACT US:



Tel.: +44 (0)7739 490394
Email: sales@towtrucktrader.co.uk
www.prolux-shop.com/superwinch

instead of £ 469.00

£ 389.00

Offer valid until 24 December 2024.
Prices plus VAT and shipping.



MANCHESTER BREAKDOWN SERVICES

24 Hour Roadside Assistance



Tel: 0161 273 2000

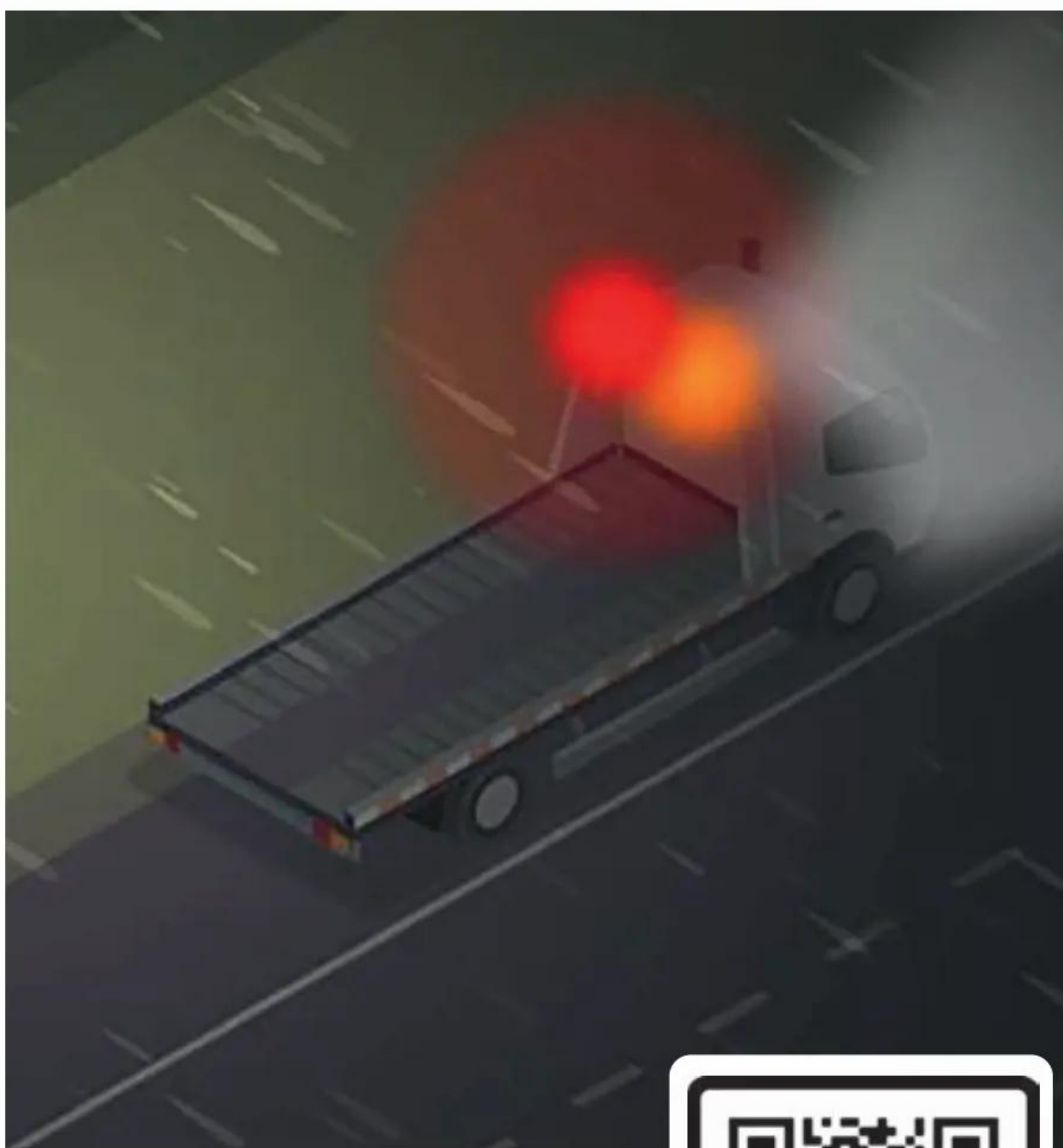
control@manchesterbreakdown.co.uk

www.manchesterbreakdown.co.uk

- Heavy Recovery • Off Road Recovery • 24 Hour Tyres
- Fleet Maintenance • Commercial Service Vans



USE OF EMERGENCY BEACONS AND LIGHTS (INCLUDING RED LAMPS)



As announced by PROSE, the mechanism for all breakdown and recovery industry operators to apply for a Vehicle Special Order (VSO) is now live. A VSO will allow operators or technicians to use rear facing red flashing lamps on their vehicles provided they meet the requirements, which includes being trained in their use.

Register for online training in the Use of Emergency Beacons and Lights (including red lamps) by using the link www.theivrgroup.com/register-for-online-training.

If you have any questions about the training please contact mail@theivrgroup.com or the IVR office on 01895 436426.



The IVR



IVR AGM 2025



The wheels are in motion for The Institute of Vehicle Recovery's 2025 AGM and Gala Dinner. Kicking off the social year, every effort will be made to ensure it's another fantastic evening for those in attendance.

The AGM itself will follow the usual business format, fellowships and honorary memberships are expected to be presented on the day, along with the coveted Bill Jackson Award.

To be considered for the award, vehicle recovery operators (large or small) are required to submit documentation that showcases a completed recovery job, regardless of if heavy or light. All applications must show the recovery process from start to finish and should demonstrate the degree of difficulty and the challenges faced, along with how they executed the recovery.

To be in with a chance to have your recovery operator name appear on the trophy, operators are encouraged to collect as much photographic evidence, risk assessments, method statements or anything else that supported a completed recovery job and send it to mail@theivrgroup.com to be shortlisted for the Bill Jackson award.

Save the Date

The date of the AGM and Gala Dinner is set as Saturday 8th March 2025 at the Crowne Plaza Hotel, Stratford on Avon.

To reserve your space at the Gala Dinner please contact Dee at the IVR office on 01895 436426. For pricing visit www.theivrgroup.com/news.

The Institute of Vehicle Recovery looks forward to celebrating all those who help to bring professional excellence to this industry.

Further information

All members are invited to attend the AGM, on the afternoon of the 8th March. Attendance to the afternoon is free of charge.

It is not too late to join. If you are interested in becoming a member, or if your membership has lapsed then please visit <https://www.theivrgroup.com/membership>.



TRAINING TODAY TO SECURE YOUR TOMORROW

Tel: 01895 436426 • www.theivrgroup.com • email: mail@theivrgroup.com





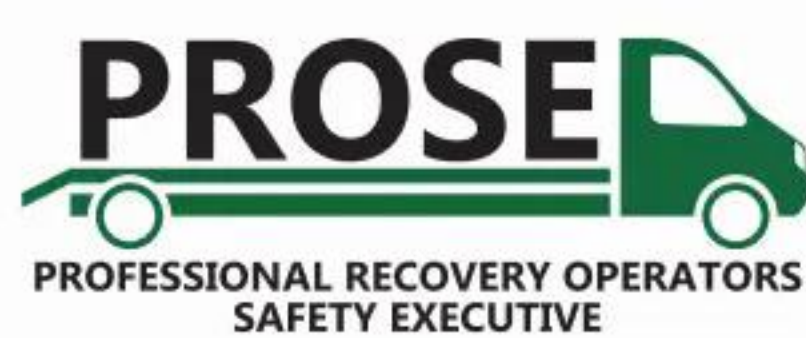
kingfisher
Motor Trade

**HOME OF RECOVERY
OPERATOR INSURANCE**



**Headline sponsors of the
Professional Recovery Tow Show**

OUR PARTNERS



0330 174 4702 | kingfisherinsurance.com/motortrade

Kingfisher Motor Trade is a trading name of Kingfisher Insurance Services Limited, registered in England No 01469545. Kingfisher Insurance Services Limited is authorised and regulated by the Financial Conduct Authority (FCA) No 310218. Registered office: First Floor 2 Parklands, Parklands Business Park, Rubery, United Kingdom, B45 9PZ

DOCIDM286



by **Derek Firminger**

THE KINGS GAMBIT

I'm making NO apology for continuing to shout about the achievement in the work PROF has done over the last five plus years, achieving something most said would never happen despite attempts for over 35 years, and that is, to get the use of red flashing lamps for both the recovery and tyre industries. Not only getting the DfT to agree to us having them, something granted back in October 2023, but also to be approved in their use, with the approved PROSE red lamp training and the first Vehicle Special Orders (VSO's) issued, in less than a year from red flashing lamps first approval.

This achievement was one of the key subjects at last week's National Tyre Distributors Association (NTDA) Conference, 95th Annual Dinner and Tyre Awards.

The conference sponsored by GB Tyres Ltd was, as always, a well-attended event with a packed schedule.

The days welcome and opening address was made by the NTDA Chief Executive Officer (CEO) Stefan Hay, passing the formality of the Chairman's address to NTDA Chairman Martin O'Brien, a well delivered articulate speech that went something like this.

"Throughout 2024, the NTDA has worked with the other founding members of the Professional Recovery Operators Safety Executive, PROSE, to develop the Use of Amber Warning Beacons and Rear-Facing Red Flashing Lamps Protocol and the associated training module covering Amber Warning Beacons, Rear-Facing Red Flashing Lamps and White Work Lights. The NTDA has already made a REACT based version of the Training Module freely available to all of its approved training providers

and has distributed the protocol to all members providing commercial and mobile roadside tyre incidents response services.

In support of both the NTDA and PROSE objective of ensuring our people are well trained and stay safe at the roadside, we are also delighted that on the 17th September the DfT announced that only those companies whose staff have been fully trained in the use of beacons and lamps,

PROF Chairman and creative force behind PROSE will be speaking today, that Stefan will also be providing an update on the work of PROSE and the roll-out of the training for the red lamps, and that Derek Firminger from the European Rescue & Recovery Initiative and Wayne Carey and his colleagues from our strategic partner National Highways are all here today to join us in celebrating this success story!"

The opening speaker, was welcomed to the stage by Stefan. Describing in only a few words the eventful work he has been involved in whilst working alongside Richard over the past five or so years, PROF's President Richard Goddard – with an update on PROF activity since 2019.

Richard last spoke to the NTDA at their conference back in 2019, whence the heading "PROF activity since 2019".

At this year's event Richard chose to use a number of video recordings from PROF events, over those years, from the start of the Campaign for Safer Roadside Rescue and Recovery (CSRRR) at the house of commons back in 2018, to showing key moments from subsequent PROFCons and PROF Led events, rather than just delivering a speech with a few PowerPoint slides Richard felt that delivering the timeline with factual and recorded moments would speak more than a thousand words.

I was not part of his presentation/speech, no I was in the audience, but once more his judgement was spot on, the timeline showed all the key moments, CSRRR opening speech from, Sir Mike Penning, our day at Portcullis House (Part of the Westminster Palace) where we gained the support of 42 MPs, and when I say we, I mean industry colleague's, PROF

▄ This was just as an important presentation for the NTDA members, because its important the full journey is understood as well as realising the operator's requirements ▄

will receive a Vehicle Special Order permitting them to fit the Red Flashing Lamps. To reiterate this means those who are NTDA REACT or NTDA LMTT trained and licenced or IVR National Highways Sector Scheme 17B trained and licensed in accordance with the aforementioned PROSE protocol.

This is an incredible achievement for all involved and I am therefore delighted that Richard Goddard the

▄ In support of both the NTDA and PROSE objective of ensuring our people are well trained and stay safe at the roadside, ▄



Isuzu N75 Dyson Transloader twin deck with electric loading winch – **SV6134/5**



Ford Transit fitted with full CRT Rescue trailer, full storage system, rear towing equipment, delivery mileage only, 2024, 73 Reg, Never used – **NSV6237**



Iveco 70C18D Crew cab with Dyson 3000SLa aluminium Slideback, 2019, 19 Reg – **SV6273**



Fiat Ducato Fixed bed Transporter with electric winch, choice of two 2015, 65 Reg & 2017, 17 Reg – **SV6294/5**



Iveco 70C18D With Dyson Enforcer wheel lift full hydraulic with H8 hydraulic winch, full plastic body lockers, choice of two, 2013, 63 Reg & 2014, 64 Reg – **SV6274/5**



Isuzu N75 Crew cab with Dyson Hydraloader 3000SLa aluminium Slideback, Hydraulic winch, radio remote, choice of two, 2016, 16 Reg & 2018 18 Reg – **SV6150/5222**



Mitsubishi Fuso Steel lockers, Bland equipment with hydraulic winch, remote control, 2010, 60 Reg – **SV6276**

USED VEHICLE STOCK 2024 AVAILABLE NOW DROITWICH WR9 9AN



Ford Ranger Very clean and tidy, low mileage, ready to go, 2021, 71 Reg – **SV5134**



Foden Alpha 6x4, Heavy duty equipment with dual winches, top crane boom, stiff legs, tilt boom, lifting forks, wheel grids, New MOT, 74000 G.T.W., **5V 6041**



Mercedes 6x6 Rotator Dual winches, fully equipped, all in good working order, MOT and registered, drives well and very clean - **£68,000.00**



Scania P124C 8x4, 420 engine, manual gearbox, dual winches, 3 stage crane boom, remote control, Equipped ready to go NRC underlift, boom, New Test – **SV6120**



Scania 6x2 Rear steer with Palfinger Crane 16TM, steel Slideback S.C Lift, remote control, extra loading ramps, new winch equipped and ready to go, 2011, 61 Reg – **SV6289**



Foden Alpha 5108R 8x4 with steel body Boniface Interstater, dual 30,000lbs hydraulic winches, rear jacks equipped and ready for work - **£58,500.00**



Iveco EuroCargo Day cab, PM 16 TM Crane Dyson Hydraloader 6000 Slideback with built in loading ramps, S.C lift, Hydraclamp, damage free equipment, a useful vehicle with plenty of life left, 56 Reg – **SV6292**



Visit Rogerdyson.com



Foundry House, Long Bank, Berry Hill, Droitwich, Worcestershire. WR9 9AN
Email: sales@rogerdyson.com Website: www.rogerdyson.com

CALL US NOW... Call Chris: 01905 777101

There are nearly half a million roadside recovery operators, in a variety of guises, who deserve protection. There are many parts to the wider campaign, but I want to focus on one specific call: to allow the use of red lights by the roadside recovery industry.

stakeholders and strategic partners, IVR, ERRI, RISC, RED demonstrating red & amber beacon, and of course the NTDA represented by Stefan.

Richard played a section of the reading in the house of commons by Tracy Crouch MP, 23 July 2019:

"That this House has considered roadside recovery vehicles and the use of red lights.

In September 2017, a roadside recovery worker and constituent of mine, Steve Godbold, was hit and killed by a lorry on the M25. He was assisting a driver at the side of the road, wearing high visibility clothing and with amber lights flashing on his vehicle when he was struck. This tragedy has caused unthinkable pain to Steve's family and partner Sam Cockerill, while the driver of the broken-down vehicle, Nathan, has suffered with post-traumatic stress disorder after the experience".

Many would have given up after the loss of their beloved, but Sam, who is here in the Gallery today, became a spokesperson for the Campaign for Safer Roadside Rescue and Recovery: a group that has provided a united voice within the roadside recovery industry to lobby both Government and Highways England to improve safety for roadside recovery operators. The campaign is calling for greater recognition of the dangers faced by roadside recovery operators, identifying four key areas that could prevent further fatalities in the future.

There are nearly half a million roadside recovery operators, in a variety of guises, who deserve protection. There are many parts to the wider campaign, but I want to focus on one specific call: to allow the use of red lights by the roadside recovery industry. We are simply asking for recovery operators to be permitted to use prominent red warning beacons while attending accidents and breakdowns on the hard shoulder or on other roads."

This being one of the pivotal moments in the campaign. (See*)

Richard brought the video footage up to date, playing a section from

PROFCon24, another well attended event fully engaging the journey, all these video clips were filmed and edited by Andy Lambert, I know there were occasions when attendees to these events were surprised to see them being formally recorded.

It's only now you can see the importance and how it tells the full story. Anyway Andy re-edited to a shortened version just for the NTDA conference. Now I know all the recorded footage, just as Richard does, and as the video played towards the end, Richard was signalling to the AV staff to stop the video, "You know the signal, swiping your fingers across your throat – back and forth," it made me smile a bit because the film was only seconds away from playing a standing ovation, where the entire audience gave Richard a standing ovation in recognition of his work and achievements. "Andy had craftily left it in" Richard spotted it, and yes stopped it.

It needs to be said, delivered the way it was, the true and accurate video footage telling the full story, and after speaking to NTDA members, they had absolutely no idea the time and effort and the lengths the campaign went through to achieve the end result.

Following directly after Richard was to be Ian Greenman PROSE Chair, Ian was to give an update on PROSE involvement in the past 12 to 18 months and the work PROSE has done with its other members, NPCC, NFCC, IVR, UKRO, NH & NTDA working with the DfT to achieve the red lamp training and VSO rollout, but following a bereavement Ian had to give his apologies, no problem said Stefan, as a member of the PROSE executive, he was fully versed with the background and continued to deliver his own edited version.

This was just as an important presentation for the NTDA members, because its important the full journey is understood as well as realising the operator's requirements, only PROSE approved training, the correct lights and flashing patterns with a dedicated interlock system that disengages the lights as soon as the vehicle moves off or disengages with the deactivation of the PTO.

Controlling when and where red lamps can and should be used, dangerous

locations, poor lighting or weather conditions, and not to use them, just because you have them and can! and ensuring a VSO issued by the DfT, because without both the VSO and the driver training then an operator has no rights to use them.

Stefan was very clear on this and reiterated the fact that they are to be respected and not to be abused.

The day then followed with speakers from, IASME Consortium – opening eyes on Cyber Security, DVSA – sharing the results from the 2023/24 tyre labelling testing programme, Tyre Industry Publications – the evolving online tyre businesses.

Following a well-received buffet lunch there were presentations from, IMI – Collective Challenge – Transition to the Mobility Sector, Pneumatic Components Ltd – The importance of preventative measures on tyre performance and maintenance, and to close the event was an Inspirational Speaker: Maggie Alphonso MBE Former England RFUW Captain, TV Presenter and Charity Ambassador.

With the day conference over, it was black tie time and as guests of Stefan and Martin, Richard and I made our way to that familiar spot you can always find us both, the bar! And subsequently our banqueting table right in front of the stage.

Good food, and drink and as always a good comedian, I've been a guest to this event for several years, and no expense spared, always a good compare and comedian and great food.

What follows is an event as slick as if you had employed the BBC to choreograph it, but no this is Stefan at his very best and in his own back yard, slick, on cue, he and his team don't miss a beat. 19 awards of which with 65 entries across 17 awards plus two are presented as an honour, making the 19. There is also the National Chairman's Award and Chief Executive's Round and Black Award are decided by the NTDA Board of Directors.

So, there is me and Richard sat at the table, fully engaged listening to Stefan and of course sampling a few glasses of wine as Stefan asks the audience for a bit of order, "quieten down please, hold your excitement" as the proceedings begun, firstly was the instillation of two honorary life members: Martin Obrien and Gavin

White, then followed National Chairmans Award for Outstanding Contribution, sponsored by Hankook Tyres: recipient – Gary Oliver.

Once Stefan had quietened the audience once more, he began to introduce the 2 winners of the Chief Executive's Round and Black Award:

"I would now like to introduce the recipient of the Round and Black Award sponsored by Snap-On. I introduced this award to recognise altruistic individuals who give up their personal time, effort, and money to either campaign for tyre safety, technician safety, address key trade problems or improve industry standards for all.

This year, I have decided to present the award to two individuals who have tirelessly, campaigned and fought, alongside me, to ensure that our commercial tyre technicians are safer when working across the strategic road network. I met the first recipient in January 2019 after a brief email exchange regarding the Campaign for Safer Roadside Rescue and Recovery, where I had offered the support of the NTDA. Fast forward to the NTDA Conference in 2019 and his legendary 'Egg McMuffin' presentation, (you had to be there!), on the work of the campaign to raise awareness of the dangers to Recovery Operators working roadside, halt the roll-out of further SMART Motorways and secure the right for Recovery Operators and Commercial Tyre Technicians working roadside to have rear-facing red flashing lamps on their vehicles, it became clear that he was a true force to be reckoned with. He is the founder of the Professional Recovery Operators Federation, the driving force behind the new strategic partnerships with National Highways, the NPCC and NFCC and the creation of the Professional Recovery Operators Safety Executive (PROSE). Like an unrelenting BATMAN, he was battled the forces of political darkness and thanks to his unbelievable efforts, there will be no further SMART motorways, we now have open and productive dialogue with the DfT and our technicians, subject to having the PROSE approved training, can as of the 17th of September apply for a Vehicle Special Order to have red rear-facing flashing lamps on their tyre incident response vehicles.

But every BATMAN needs a ROBIN, and the second recipient has been just that. In his understated but stoic way he has been at every event, every meeting, contributed to every campaign initiative, he's written hundreds of articles, presentations, and letters to support the campaign, PROF, PROSE and the NTDA. His contribution has been just as powerful and crucial to the success of PROF's work, and it would have been very remiss of me not to also honour him this evening.

As Mark opened the gold envelope as if it were the "Oscars" Richard and I had already looked at each other and quietly said, "My god what an honour" as Mark called out our names The recipients of this year's Round and Black award – Richard Goddard and Derek Firminger.

I am sure that these two guys now know exactly who I am talking about, but let's now make it official.

I now take great pleasure in welcoming Mark Ost, General Manager at Snap-ON to the stage to announce the 2024 recipients."

As Mark opened the gold envelope as if it were the "Oscars" Richard and I had already looked at each other and quietly said, "My god what an honour" as Mark called out our names The recipients of this year's Round and Black award – Richard Goddard and Derek Firminger.

Really what an honour, for us both to be recognised with the Chief Executive's Round and Black award stunned us both, for once Richard was silenced, well for a few minutes he was. Sorry, no only for a minute or two, because we were both continually approached and congratulated as well as thanked for all the work we had done on behalf of both industries.

And it didn't stop there, Richard has now been asked to speak at three further

events, delivering the message and the journey of the campaign and the work PROF has done and continues to do, two of the events are for transport industry training companies and one is for one of the tyre industries manufacturers and suppliers, what a privilege.

I guess it just leaves me to write a closing message, how time flies, this is my 125th edit for Professional Recovery Magazine and believe it or not that's just over approximately two million words, not a bad university dissertation for a dyslexic recovery operator!

And on that note, I'm pretty sure it's the first time I referenced my name in an edit!

We often speak about the 35 plus years the recovery industry has campaigned for "Red Lights" as we have always referred to them, well I'm one of those who never gave up and remember campaigning back in the 1980's.

But being part of the journey with Richard and PROF these past five years has been on a different level, Richard honoured our late colleague and friend Dave Gregory's wishes and I believe also honoured his legacy.

Richard had his targeted strategic plan, and over the past five years slowly knocked down the opposing challenges, he spoke out and at times and upset some, but feared no reprisal. He really voiced his mind, and tore down those walls of cronyism, in doing so he gained the respect of some of the most influential, realising the strength in partnerships, and like a game of chess he has performed the "Kings Gambit" – an age-old aggressive opening that true chess players revered. Largely employed by top players for more than 300 years, this chess opening gambit leads to open games that are exciting and decisive.

Richard it's has been my honour, and something I'm truly grateful for you believing in me partnering you on this fantastic but challenging journey.

Were both now off to Highways UK NEC Birmingham, and the Highways UK Excellence Awards Dinner at the VOX, "there will be no awards for the dynamic duo there"!

Keep Safe.

Derek Firminger FIVR, MSOE MIRTE

* <https://www.parallelparliament.co.uk/mp/tracey-crouch/debate/2019-07-23/commons/westminster-hall/roadside-recovery-vehicles-red-lights>
<https://ntda.co.uk/2024/10/14/ntda-tyre-industry-awards-2024-the-winners-are/>

Dyson Trevo

Excessive

RogerDyson.com

18T

18T

6.7m

23T

23T



The Winning Team

Side and Rear Winching Spades
Width Adjustable Rear Jacks,
Full Aluminium Lockers,
Dual 50,000 lbs Winches,
4.4 Metre Underlift Reach
Extra Direction Pulleys

The UK's Leading Recovery

or HDRV Extreme

Degree or Extreme Measures

01905 775808



ery Vehicle Manufacturer

NTDA HONOURS THE WORK OF RICHARD AND DEREK

Congratulations to both Richard Goddard and Derek Firminger for being presented with the Chief Executives' Round and Black Award at this year's NTDA Awards Dinner.

The award is presented by the Chief Executive to individuals, recognising altruism in relation to safety, raising standards and improving the trade for others.

In his introductory speech, NTDA Chief Executive Stefan Hay said: "This year I have decided to present this award to two individuals who have tirelessly campaigned and fought alongside me to ensure that our commercial tyre technicians are safer when working across the strategic road network."

The awards were sponsored by Snap-On and presented by Snap-on General Manager Mark Ost.



Derek Firminger and Richard Goddard receive NTDA CEO's Round and Black Award with Mark Ost, Martin O'Brien and Stefan Hay.

TOWSHOWREVIEW

SUCCESSFUL TOW SHOW FOR TELE RADIO



Mike Healy, Head of Sales UK & Ireland at Tele Radio said: "Tele Radio are a market leader in the design and manufacture of Radio Remote Control solutions, had a very busy two days at the Professional Recovery Tow Show 2024 meeting new and existing customers and displaying a range of products, from simple pushbutton controls to complex, customisable, proportional hydraulics and camera feedback systems. It was great to see our products also on display on many of our existing customers' stands at the Tow Show, showing Tele Radio products in action! The recovery industry is one of Tele Radio's most popular markets and the Tow Show allows us to interact with a

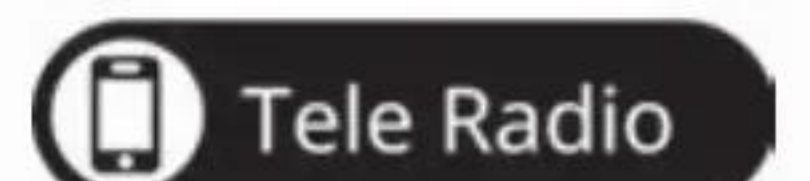


wide range of manufacturers, system integrators, owners, and operators from across the UK and Ireland."

"On display at Tele Radio's stand was their new SupraTEQ TW78 waist transmitter which has been specially developed for the demanding mobile and industrial hydraulics sector, where the 4.3-inch colour screen is important for showing detailed feedback information. The SupraTEQ TW78, offers smoother animations, with less flicker thanks to the dual buffering of the graphics memory and the LED lighting in the handles of the transmitter is useful in dark locations. The transmitter is PLe certified and therefore extremely suitable for work with a high safety risk, such as lifting

and hoisting, especially moving heavy loads. The emergency stop function of the PLe/Cat3 level offers additional safety."

"Many customers we spoke to at the show were interested in this system, however Tele Radio has numerous options to suit your needs, even a completely bespoke, wireless remote-control system if required. To find out more or to get a quote, please contact us at sales.uk@tele-radio.com or visit our website at www.teleradio.com."



TRUCKMAX

EST. 2011

Tel

01945 479122

Watch and find us on



- ▶ **MOT COMPLIANT EXHAUST SYSTEMS**
- ▶ **FULL PROJECTS UNDERTAKEN**
- ▶ **REPLACEMENT SILENCERS**
- ▶ **TAILPIPE REPLACEMENTS**
- ▶ **SHOW PIPES**
- ▶ **V8R SYSTEM**

www.truckmax.co.uk
email: info@truckmax.co.uk



Manufacturers of Stainless Steel Exhaust Systems

Visit our New Web Shop at www.truckmaxshop.co.uk

TRUCKMAX LTD, ORCHARD HOUSE, 90 BOLENESS RD, WISBECH PE13 2XQ

ANOTHER TOW SHOW SUCCESS FOR AKFS

September marks the start of Autumn and one of the recovery industry's most exciting events: the annual Professional Recovery Tow Show at Telford International Centre. For over 20 years, AKFS Ltd has proudly participated, displaying a selection of our high-performance Recovery and bespoke Logistics vehicles.

The 2024 Tow Show exceeded all expectations, proving once again why it's such a crucial event for us. It continues to offer the perfect opportunity to present our latest vehicles to key industry players.

This year, we showcased two standout models: the 7200kg GVW Iveco Daily Enclosed Vehicle Transporter and the 3500kg GVW Ultra® Car Transporter. Built on an innovative chassis conversion system developed by our strategic partner, AL-KO Vehicle Technology Group, the Ultra® impressed with its remarkable efficiency, performance, and available payload capacity, making it an ideal choice for those in the logistics sector.

However, the real showstopper for AKFS was the Iveco Daily Enclosed Vehicle Transporter, kindly supplied by our valued customer CMG. Visitors praised its industry-leading build quality and design features, making it the top pick for businesses needing reliable, covered vehicle transportation.

AKFS Product Specialist Tom McGeown reflected on his first Tow Show experience: "The show is a fantastic opportunity to engage with both new and longstanding customers. It allows



us to showcase what makes our designs stand out and to highlight innovations like the Ultra® Recovery Vehicle, which offer distinct advantages to our clients."

Tom's first Tow Show was a hit, and he's already gearing up for the 2025 edition! But why wait until next September? **Reach out to Tom now for more info at +44 1246 250022 or email at tom.mcgeown@advanced-kfs.co.uk**



THE IMPORTANCE OF EXCELLENT AREA LIGHTING FOR VEHICLE RECOVERY OPERATORS



When it comes to the challenging task of vehicle recovery operations, having adequate area lighting is not simply a matter of convenience – it is a crucial element that can make the difference between success and failure. Imagine a scenario where a vehicle breaks down in the dead of night on a dimly lit road. Without well specified lighting, the job becomes not only arduous but also perilous for both the recovery team and the stranded motorists.

One of the paramount reasons why outstanding area lighting is

imperative for vehicle recovery operators is safety. Well-illuminated workspaces enable operators to carry out their tasks with precision and efficiency, thereby mitigating the risk of accidents and injuries. This is where top-tier lighting solutions like Venta's Mylo and Ezio come into play, offering exceptional brightness and light spread to ensure that recovery operations can be conducted confidently and effectively regardless of the time of day or location.

Moreover, effective area lighting significantly enhances operational



efficiency. By providing ample illumination at the recovery site, operators can swiftly assess the situation, locate tools and equipment, and execute the recovery process seamlessly.

In conclusion, the significance of excellent area lighting for the UK's fourth emergency service cannot be overstated. Venta's customer centric approach to product design ensures that our products offer unparalleled brightness, durability, and efficiency, ensuring that recovery operations are conducted smoothly and safely. Illuminate your path to success with Mylo and Ezio – the guiding lights that shine brightly in the world of vehicle recovery!

Visit www.venta.global to find out more.





- ISO Registered
- Manufactured in the UK



Tel: 01922 613633 www.lodar.com



Tel: 01922 613633 www.lodar.com



We're on the move!



We're excited to announce that the Tow Show is moving to a new home



Situated just outside Coventry, Stoneleigh Park is the perfect venue for the future of the number one event in the recovery industry.

With plenty of indoor space plus options for exhibiting outside, we're excited that the contract has now been signed, with Stoneleigh becoming the home to the Tow Show for 2025 and beyond.

More information on next year's show will be included in future issues, but we are planning tours of the new venue for existing and new exhibitors.



**For more information please email
Nick Phipps - nick.phipps@kelsey.co.uk
or call 01959 543562**

Stoneleigh Park - Coventry

Wednesday 1st & Thursday 2nd October 2025



THE FUTURE OF RECOVERY
TOWTRACK



CAPACITY: TOWTRACK STD: 2500 KG
PETROL ENGINE
TOWTRACK XL: 3500 KG
DIESEL ENGINE

CONTACT: DAVE BLAND - 01759 372515
EMAIL: SALES@DAVEBLAND.CO.UK

apex NETWORKS

Do you know how many layers to the RMS software there are?

Find out how RMS can maximise your business' efficiencies across many operational levels.

Scan me!



TOW TRUCK
TRADER

Selling?

Specialised brokering & advertising through high profile website

Buying?

New & used vehicles from a constantly updated stocklist

Finance?

Tailor-made packages for all types of equipment

CALL US NOW ON
07739 490394

www.towtrucktrader.co.uk

RVL MEET UP WITH CUSTOMERS OLD AND NEW AT THE TOW SHOW



Year after year, for eight years running, our team has eagerly taken part in the Tow Show, using it as a platform to solidify our relationships with our long-standing customers and to welcome new ones. This event is not just a chance to connect; for us, it's an opportunity to build lasting professional relationships. Each conversation is our opportunity to demonstrate our commitment to understanding and prioritizing the unique needs of each customer. We're dedicated to ensuring you feel valued and understood.

The Tow Show provides an exceptional platform for us to display a wide variety of our products, from budget-friendly options and best-sellers to premium items. This event also offers a unique opportunity to introduce exciting new products to a broad audience over several days.

The interest we had in an upcoming product was unbelievable, which we are thrilled to soon be stocking. Our new Lumax Pro Bars are a groundbreaking addition to the market and we are certainly excited for their arrival. This high-intensity double row light bar combines driving spot and flood beams, enhanced with tri-colour marker lights and Amber strobe lights. These will be here by the end of the month, and we simply cannot wait!

Although the 2024 Tow Show has only just ended, the excitement continues as we look forward to next year's event. We're excited to see who we meet and what new and exciting products we will be showcasing!



D&G Assist LTD

24HR NATIONWIDE LIGHT AND HEAVY RECOVERY
Cars, Vans, Commercials, Motorcycles, Aviation,
Plant Equipment, Motorsport

WORKSHOP FACILITIES
Cars & Commercials, Car and Van MOT Centre
Approved Tachograph Centre

24HR CALL CENTRE
Nationwide Recovery Services, Call Centre Management
Fleet Breakdown/Accident Management, Industry Training







0870 122 4000 www.dgassist.co.uk

UK'S #1 RECOVERY TRUCK MANUFACTURER



AMS

info@amsrecoverytrucks.co.uk
www.amsrecoverytrucks.co.uk

01945 587 818

The Rapid Deployment Transporter (RDT)



Rapid, Reliable Recovery...

Trailerteq is an innovative, forward thinking engineering company, specialising in the development of road side towing equipment.



RDT Features

- Easy to use
- Multi-fit & Adjustable
- Cost Effective
- Transferable
- Fully Automatic Deployment
- Multi use winch
- Ready to use in just 8 minutes
- Quick and easy storage after use



Trailerteq

rapid | reliable | recovery

Call: 0845 004 9693

www.trailerteq.com

Low cost saving you money & fuel!

Celebrating 15 years of rapid, reliable recovery!



Thank you to everyone who visited us at the Professional Recovery Tow Show

A **BIG** thank you to our valued VRO network who receive 100% of our work



VRO Hotline:
01206 771700
www.call-assist.co.uk

This one is new!



Achieved by startrescue.co.uk which is a trading style of Call Assist Ltd.



VEHICLE RECOVERY SYSTEMS

01438 840 690 - 07984 457 561

The Choice of the Professionals

New Vehicles in build now
and built to order



Tel: 01438 840 690 · Mobile: 07984 457 561

www.vehiclerecoveryvehicles.co.uk · info@recoveryvehicles.com



VEHICLE LIFTS



BRAKE TESTING



DIAGNOSTIC EQUIPMENT



VEHICLE PITS



INSPECTION & SERVICE



ONLINE TRAINING



TOTALKARE
WORKSHOP EQUIPMENT EXPERTS

REQUEST A QUOTE



FOR
**WORKSHOP
EQUIPMENT**
IT'S **TOTALKARE**



CABLE-FREE, CABLED &
WASH BAY COLUMN LIFTS

From column lifts to brake testers, tyre changers to vehicle pits, air conditioning, oil management and almost everything in between, for workshop equipment, it really is Totalkare.

Call us for a quote today.

GET IN TOUCH: T: 0121 585 2724 / WWW.TOTALKARE.CO.UK

WHAT IS AVAXHOME?

AVAXHOME-

the biggest Internet portal,
providing you various content:
brand new books, trending movies,
fresh magazines, hot games,
recent software, latest music releases.

Unlimited satisfaction one low price

Cheap constant access to piping hot media

Protect your downloadings from Big brother

Safer, than torrent-trackers

18 years of seamless operation and our users' satisfaction

All languages

Brand new content

One site



AVXLIVE **ICU**

AvaxHome - Your End Place

We have everything for all of your needs. Just open <https://avxlive.icu>

BIG EXPECTATIONS



Here at Droitwich, planning for the Tow Show starts early. We start by picking the production vehicles and models we want to take. The whole team buys into the process, design, building, painting, final assembly and test. We do not produce special show vehicles, we just build our normal production models. That extra pride as everybody, even the build team, want to see the vehicles they have built, on show at Tow Show.

Finally, the week of the Tow Show arrives and, on the Monday, the day before

/// We start by picking the production vehicles and models we want to take. The whole team buys into the process, design, building, painting, final assembly and test. ///





buildup, all the preparations have been made. All fingers have been crossed, hoping for good weather for the drive across to Telford. We want the vehicles to arrive as clean and pristine as possible.

Even on the build-up day the plan is changed and adjusted. How we use the space, what vehicles go with others, even down to the colours of vehicles parked next to one another.

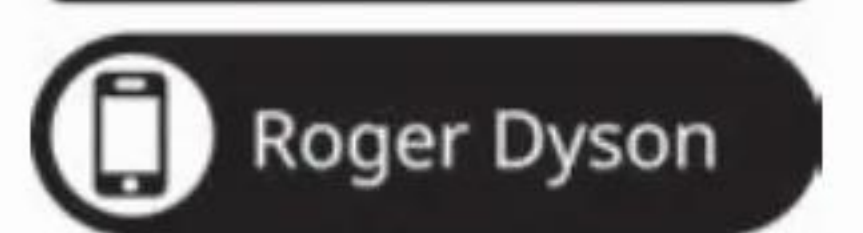
Expectations are still increasing. Our set up time is early afternoon, so the stand team take the opportunity to take a final rest before the next two full on days.

Day One of the show starts with an early stand team meeting. Everybody is made aware of what is expected and their duties for the day. Expectations are at their highest. Then the show opens with great footfall, good enquiries and customers looking at their vehicle for the very first time and talking about the next requirement.

After 50 plus years we have many loyal customers, it's great to see and talk to them, as well as take enquiries from new customers.

The Professional Recovery Tow Show is great for us. It never disappoints. It always produces good enquiries and orders, and our big expectations are never disappointed. It always exceeds the preparation, so we go to the show with big expectations. We return with even bigger expectations; the people we have talked to, the comments that we have received, and the enquiries to work on.

Roger Dyson comments: "Thanks to all the customers for their enquiries, all the Tow Show team and my own team who have worked very hard to produce very best results from the 2024 Professional Recovery Tow Show. You have to have big expectations, and on this occasion, they have not disappointed."



After 50 plus years we have many loyal customers, it's great to see and talk to them, as well as take enquiries from new customers.



VLA™ SLIDEBED

Key Features

- Available in 3t, 5t & 6t Capacities
- Tough, Durable Aluminium Deck
- 2nd Car Lift Available on 5t & 6t Models
- Galvanised Sub-Frame & Tilt-Frame
- Side Winching Points Built Into the Deck
- Radio Remote Control With Cab Holder
- Smooth & Quiet In Operation
- Good Payload - Very Low Approach Angle



To find out what's happening at Boniface visit our social media pages



Call For Further Information
01842 754232 | boniface-eng.com

BONIFACE

DEBUT TOW SHOW FOR WARRELL RICHARDS

Warrell Richards Limited is a family run business in Kent that specialise in the manufacturing of aluminium and stainless side lockers.

With an extensive knowledge in the transport industry, we have carefully selected an extensive range of standard sized lockers, trays, side skirts and accessories that are easily accessible through our website warrellrichards.com

Also, with many years of experience in the manufacturing field we are able to work with you to customise our products to suit your needs or design new innovations and bring them to life creating a product that suits your needs perfectly. UK, quality built, reliable service at extremely competitive prices. Our boxes are built to bring you maximum storage. They are durable, rigid, secure and aesthetically pleasing.

Since our founding, Warrell Richards has been known for quality services, exceptional efficiency and the highest level of professionalism. No matter what service you're looking for, we guarantee to not only meet, but exceed your expectations and ensure your full satisfaction.

Secure storage space is always essential and with our boxes you get what you need. Ideal for carrying power tools, chain saws, petrol cans, straps, chains, light boards, rags and many other items.

This was our first Tow Show and we found the event informative and enjoyable. We were able to connect with



others in the industry and meet many valued contacts. We look forward to attending future events.



ELP ENGINEERING – YOU TALKED, WE LISTENED!

ELP Engineering Ltd recently attended the Tow Show in Telford, and what an amazing two days we had showcasing ELP and Lodar Products. It was a pleasure meeting customers' old and new, chatting to the other exhibitors, and seeing what is current in the Recovery Industry and where we can help.

You talked we listened! Acting on the feedback we received from the show we would like to announce the following:

Lodar Free Transmitter images

ELP is now offering a FREE service to install or replace the Lodar button images into your blank IP transmitter purchased elsewhere.

As a Lodar approved distributor we always install your chosen button images, however several people asked if we could provide button images for their transmitters. It's a simple process please go to our website elpengineering.co.uk and search for Lodar Button images. We will install your chosen images into your transmitter, keeping your warranty valid and return FREE OF CHARGE within 48 hrs.

Replacing obsolete Icarus remotes using a Lodar Kit

We've been designing bespoke Lodar Plug and Play kits to replace the now obsolete Icarus remotes, we installed



our first one on the ex AA recovery truck seen on the front cover of issue 63 of the AVRO News magazine. The plug and play kit means that you can install a replacement yourself, so no need to take the vehicle off site to a third party to install or call in an Auto Electrician.

It's a simple installation with three prewired plugs, instructions and fixings for the receiver are also included. Customer feedback at the show was

very positive, one customer said 'It was easy to fit'. It uses a Lodar 92204 waterproof system so replacement transmitters are readily available and comes complete with a beeping holder for in the cab.





RECOVERY VEHICLE HIRE SPECIALISTS

At Recovery World we have vehicles to suit all business needs

- 3.5t Beavertail car transporters
- 7.5t Recovery units & transporters
- 12/15t Recovery units & transporters
- Super-Low-Sliders for performance, prestige car transportation
- Day & crew cabs
- PAS 43 standard
- ECE Regulation 65 approved for Chapter 8 Traffic Safety Measures
- Short and long-term, including contract hire
- Nationwide delivery

**RECOVERY
WORLD**

SUPPLIER OF RECOVERY VEHICLES & ACCESSORIES

B&T VEHICLE HIRE

E: hire@recoveryworld.co.uk T: 0844 3351270





SUCCESS AT THE NTDA AWARDS

It's a massive honour to ever be recognised for committed hard work and the achievements they have yielded. However, it's even better when those achievements are recognised and appreciated by another national industry.

Last week the NTDA honoured the Professional Recovery Operators Federation. The award was made more special for me, because it recognised the contribution made by Derek Firminger.

It's ironic that it has taken another national industry to recognise Derek's contribution to the recovery industry and not just PROF.

The next time you're all reading one of his edits in Professional Recovery Magazine, maybe take a second to reflect on the work Derek puts into this industry, and on a voluntary basis!

So well done PROF, but also well-done Derek and thank you mate.

With reference to my award, it's a fantastic honour for PROF to be recognised by our colleagues and strategic partners in the NTDA. In particular CEO Stefan Hay who has helped make our strategic partnership a formidable and productive alliance. Thanks Stefan, onward and upward.

However, all said and done, it would be remiss of me not mention Dave Gregory,



my friend and an inspiration behind PROF. Without hesitation I dedicate this award to David Gregory 'The Man'.

Richard Goddard
President
Professional
Recovery Operators
Federation



WELCOME TO THE NORTHERN IRELAND VRO'S

The Professional Recovery Operators Federation are pleased to announce a new representative of the PROF forum network.

Keith Lennox, from Lennox Auto Services Ltd has accepted my invitation to be PROF's representative in Northern Ireland.

Keith is now officially a PROF forum member, and I believe he will not only make an exceptional representative of PROF, I also firmly believe NI VRO's now have an official PROF point of contact who they can liaise with on important recovery industry matters.

First point of business will be to try and organise a PROF meeting in Northern Ireland to discuss and highlight Police Contracts and again improving statutory fee charges for NI VRO's.

So welcome Kieth Lennox, and welcome to NI VRO's who now have a platform for their views and concerns.

THE 2024 RECOVERY INDUSTRY REVIEW

The Professional Recovery Operators Federation are pleased to announce The 2024 Recovery Industry Review.

This united recovery industry review will be held at Hinkley Island on the 12th December and will be hosted together by PROF and AVRO who again are giving their support to a united recovery industry event, and I welcome their continued support of working together for the benefit of their members and recovery industry stakeholders.

As always lunch will be provided and as it's Christmas it will hopefully be a Christmas lunch served with the love, joy and laughter we currently enjoy.

The topic of the review will be to look back and access 2024 and look forward on tackling the challenges of 2025. I'm hopeful the NPCC will review with us all the recent Tow Show Police Conference and give feedback. Some of our other work providers will also be participating in the 2024 review.

The speakers and agenda will be announced in the next issue of the magazine and on the PROF website. As usual this Christmas Conference and lunch will be by invitation only, which will be strictly adhered to! Even I cannot make water into wine, or two fishes feed numerous delegates and we will be providing a Christmas lunch.

The Tow Show Police Conference by all accounts and feedback was deemed to be a success as was PROFCon24 and last Decembers EV conference. So, let's review the last 12 months and how we can improve on the next 12 months through 2025.

So, date for diaries - 12th December 2024

RICHFORD

MOTOR SERVICES LTD

Specialists in Heavy and Light Recovery, 24/7 Nationwide Service



Now on TikTok
@richfordmotors

Our latest heavy,
tribute to the
Red Arrows



Thank you to everyone who visited us at Tow Show 2024! It was great to meet so many of you and showcase our latest recovery solutions. We can't wait to see you again at Tow Show 2025!



We are a distributor of the 3.5t Isuzu Basreal. Contact us to discuss it's unmatched lifting capacity.



Explore our extensive stock of quality used recovery vehicles
Email: sales@richfordmotors.com for more information.



The First Mover FMR3500 is a fully remote-controlled recovery system, ideal for safely moving vehicles in tight spaces. Exclusively available through Richford Motor Services.

07973 858 509
For Vehicle & Equipment Sales

sales@richfordmotors.com

01773 835 192
for Breakdown

richfordmotors.com



NEW J&J TRUCK HEADS TO BAKERS RECOVERY

Bakers Recovery have a loyal, long-standing business relationship with J&J Conversions and have recently commissioned them to build another new recovery truck.

Working alongside the team at J&J, they opted to factory order a 16T Red DAF LF 230F which included an extended day cab, eight speed automatic gear box, rear air suspension, sun visor, luxury driver's seat, air con and central

locking.

The conversion specification was very similar to their previous build, an F1 Low approach steel slide bed which provides dual function: perfect for loading low chassis vehicles but is also robust enough to deal with accident damaged vehicles: essential when Bakers Recovery are agents for both Hampshire Highways and Hampshire Police.

After 50 years in the business, Bakers

obviously know their operational and specification requirements, the new conversion included; 2 T second car lift, winching bollards, wreckers kit, trolley jack, skates, Ferrari ramps, granule bin, D shackle, additional light bar, strobes and work lights.

Bakers Recovery are experts in specialist recovery and HGV recovery whilst partnering with most of the major motoring organisations, they also offer secure storage solutions.

Once again, J&J Conversions welcomed the opportunity to build for Baker's Recovery and are always thrilled to see any of the Baker's fleet working the local area.

For more information on Bakers

Recovery: www.bakersrecovery.co.uk

For more information on

J&J Product

range www.jjconversions.co.uk

or email:

helen.majeed@jjconversions.co.uk

or email:

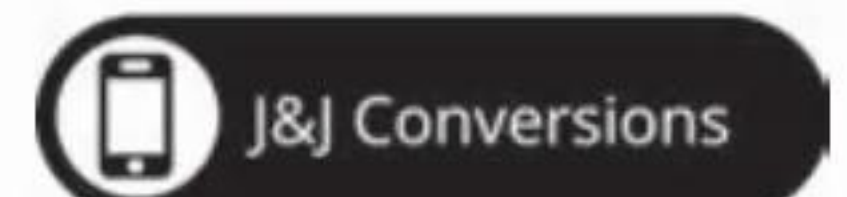
helen.majeed@jjconversions.co.uk

or email:

helen.majeed@jjconversions.co.uk

or email:

helen.majeed@jjconversions.co.uk





CPL LAUNCHES RECOVERY DIVISION AT TOW SHOW

This year's Tow Show marked a significant milestone for CPL, as they proudly launched their new 'CPL Recovery' division. Already a leading manufacturer in the pick-up and van-mounted platform sector, CPL brings years of engineering expertise and the strong backing of Klubb, the European leader in aerial platforms, to the recovery market.

CPL unveiled the CPL-50, a robust recovery truck designed for the RAC, their first major client. The crowd's response was overwhelmingly positive, showcasing the build quality and innovation CPL poured into this new product.

Mark Sawyer, CPL's Commercial Director, reflected on the event, saying, "It was fantastic to attend the Tow Show for the first time. We met many industry leaders hungry for reliable, innovative recovery vehicles, and we're here to deliver exactly that."

The feedback from both the RAC and attendees emphasised the build quality and ability to meet customer needs, which are the keys to the success of CPL's



launch. Sawyer added, "We're excited to continue learning and improving our offerings for the recovery sector."

With a state-of-the-art facility in Northamptonshire, CPL is committed to driving further innovation in the UK recovery vehicle market. They look

forward to returning to the Tow Show with even more solutions to support the growing needs of the industry.



Chassis In Stock :

- Iveco 7.2T Daily Day & Crew Cabs , 5100mm Wheelbase
- Iveco EuroCargo 12T & 15T Crew Cab, 250bhp with Air Suspension
- MAN 12T Crew Cab, 250bhp with Air Suspension
- DAF 16T Extended Cab with Air Suspension
- Volvo 14T Crew Cabs with Air Suspension



Industry Specialists in :

- VRS -
- Power Lifts -
- Accident Units -
- Beaver Tails -
- Covered Transporters -
- Twin decks -
- F1 Low Approach Slidebed -
- Predator Slidebed -



Call us on : 01264 332919
www.jjconversions.co.uk



J&J Conversions Ltd, 75a Columbus Way, Walworth Business Park, Andover, Hampshire, SP10 5NP



Email: info@jjconversions.co.uk



GREAT SUCCESS OF ESSEL AND BUS AND TRUCK SERVICES IN TELFORD

ESSEL together with Bus and Truck Services would like to thank you for the pleasant and constructive meetings during this year's Professional Recovery Tow Show in Telford. It was an honor to present our news and innovations to you. At the same time, we were very pleased with your favor and appreciation of our innovative solutions and precise processing of individual details of our heavy duty recovery equipment.

As you have surely noticed, not only the number of your visits to our stand has increased, but also the stand itself.

This year we presented you with 4 very interesting superstructures. At our stand, we presented two superstructures on VOLVO chassis, which were manufactured directly in England by our business partner Bus and Truck Services. Both superstructures boast remote control of the chassis itself. In addition, these devices also include our exceptional Chain Lift device, which allows you to easily access chains or other tools located in higher cabinets. On VOLVO chassis, you had the opportunity to see both our variants of heavy duty recovery transporters: ER3317 with 1 crane arm extension as well as ER4120 with two crane arm extensions in the T-REX version with front support legs.

We are proud to present two new products made in Slovakia. Recovery transporter T-REX for the first time on a MERCEDES chassis. We are delighted that two of these vehicles have joined the Phil Richford fleet and will be proudly working in the UK market.

The absolute surprise we have prepared for you is the heavy duty towing platform ET12000, which is unique on the market. This device has been successfully operating in the Swedish and Finnish markets for several years and we



look forward to seeing it on English roads from now on.

Thank you for your interest in the ESSEL brand and for the trust and recognition you have shown.





TOW SHOW SUCCESS FOR WINCH SYSTEMS



Forget our wares and the impressive trucks, I think this was the Marie Show! Rightly so too, I know we'll all miss her. What a great sendoff! She got more hugs than a care bear!

Neil and I were very pleased with this year's Tow Show. There was plenty of footfall, lots of interest and we even shifted some units from our stand. It was very productive.

The trucks get more impressive every year and it's great to see so many of our COMEUP hydraulic winches installed on them. Remember where to come for the parts, accessories and services!

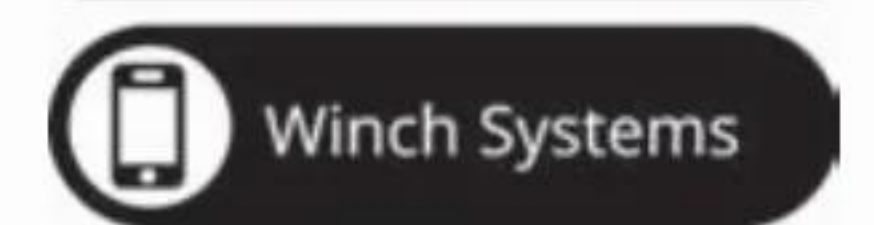
Our COMEUP winches drew a lot of attention, as did the ropes, shackles, remotes, hooks and everything else we provide to the recovery industry.

As always, very nice to have the annual catch-up with the familiar faces and meeting new ones too.



Thanks to Nick Phipps, Paul Gregory, Marie and everyone else who went the extra mile to pull off another successful Tow Show.

See you next year.



NATIONWIDE FLEET ASSISTANCE

- One stop service solution
- Market leading pay on use service
- Individually tailored solutions
- Accident Management FNOL
- Cheaper than manufacturer schemes
- Working with bluechip companies

Have you signed-up to the CMG Backload Portal?
For more information, email backloads@cmg-org.com

Also offering
LOW LOADERS | MULTICAR
COVERED TRANSPORT

0800 282449
www.cmg-org.com

CMG 
Constantly moving forward

Lodar WIRELESS SOLUTIONS

5 YEAR PRO-RATED WARRANTY

Tel: 01922 613633 www.lodar.com

JUDGEPOWER



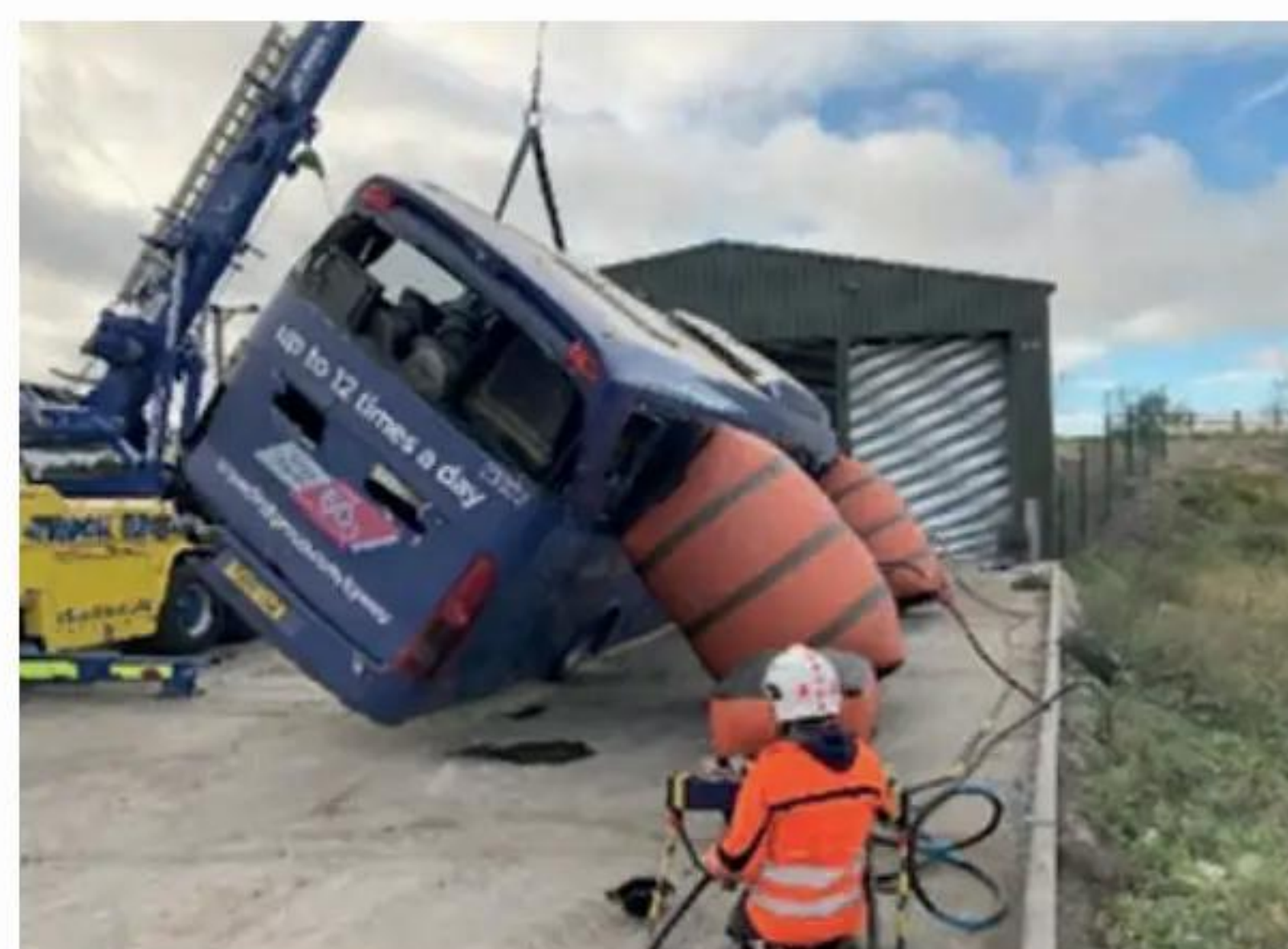
Contact Judgepower on 07944 920586
www.vehiclerecoverytraining.com

The IVR's VR23 covers the routine removal procedures for buses and coaches. It also covers the health and safety aspects relating to the recovery of buses and coaches as well as determining the best equipment such as wheel grids, forks or low loader for the particular recovery situation.

Judgepower Training Services also carry out bespoke bus and coach rescue courses. This training is undertaken by Mike himself as he has many years' experience in the bus and coach sector in lift and tow and serious accident situations and can identify best roll over and lifting points utilising spreader bars and high and low pressure air bags and in the past has trained fire and rescue services in stabilisation and lifting techniques with buses and coaches.

Mike has also carried out demonstrations and training in America using the famous American yellow school buses and has trained the US Air Force with one of their military recovery trucks and one of their military coaches.

Feel free to contact us for further information on this course or if we can help you with any other training requirements you might have, call Tracey 07944 920586 or e-mail her at tracey@jpts.co.uk.



BRENHAUL COMMERCIAL SERVICES

Based in Hampshire, Brenhaul was founded in 1998. They offer nationwide recovery covering all vehicles and trailers. They offer a fully fitted fleet with mobile workshops for any mechanical breakdown.

Contact Brenhaul on 02380 652535
www.brenhaul.co.uk

BRENHAUL
 COMMERCIAL SERVICES LTD

24hr Recovery for cars, Light & Heavy commercials. Bus & coach, Horsebox. Workshop, Servicing & mot's.

Tel: 02380 652535
 Barton Park Industrial Estate, Chickenhall Lane, Eastleigh, Southampton, Hampshire. SO50 6RR.

Professional
Recovery
 IN PRINT, DIGITAL AND LIVE EVENTS

TO ADVERTISE HERE CALL
ANNIE MULCRONE ON 01732 904511
 OR EMAIL
annie@talk-media.uk

AMBER RESCUE

24 hr Recovery of vehicles up to 7.5t. Winching and storage available. Vehicle repairs & tyre fitting service. Based in Folkestone, Kent CT20 3UJ

www.amberrescue.co.uk
amberrescue24@gmail.com

Call: 07891 211443

AMBER RESCUE



Contact Amber Rescue on 07891 211443 • www.amberrescue.co.uk

Here at Amber Rescue we offer recovery and breakdown assistance to all types of vehicles from cars to HGVs. We can recover vehicles up to and including 7.5t. If it is

stuck off road or had an accident, we can recover it. Storage facilities available inside and outside. Repairs and tyre fitting available

EASTERN GENERAL RECOVERY



Eastern general now have various depots in London: Belverdere for South London; Upminster for East London; Enfield for North London. 62 vehicles based across the three sites, light and heavy recovery.

Contact Eastern General on 01277 283002
www.easterngeneralrecovery.co.uk



EASTERN GENERAL
RECOVERY SERVICE



Based in Kent, East London
and South London

24 hour Roadside and Recovery
for cars and commercials

01277 283002



JUDGEPOWER
TRAINING SERVICES LIMITED

NRC Certified Rotator Trainer
Factory Approved Eextract/Tow Track Trainer
United Kingdom sole suppliers of the Bill Jackson
Legacy Training Programme



Heavy or Light Training carried out at your premises or
at one of our dedicated training centres

Modular Courses include:

Health & Safety, Customer Service, Assessing the Roadside Situation, RDT Training, Motorcycle Recovery, Light or Heavy Vehicle Recovery, Air Cushion Recovery, Lorry Loader, Preservation of Evidence, Advanced Winching, Recovery Incident Manager, Emergency First Aid at Work, EV & Hybrid Vehicle Level 1-3, Bus & Coach Awareness, NRC Rotator Training, Eextract/Tow Track, Bespoke training can be undertaken to meet your training requirements



IVR & CPC Approved Trainers



Contact Mike 07773 049479 or Tracey 07944 920586

E-mail: info@jpts.co.uk

www.vehicle-recovery-training.com

OPERATOR SPOTLIGHT

SOUTH WEST OPERATORS

CANNON COMMERCIALS

These are two of recent jobs. The first was a police job. Plant fell off a low loader going around the roundabout but not too well secured. We up righted it and reloaded onto the low loader and made it 100% secure so it wouldn't fall off again.

The second is a customer of ours for 30+ years. A local farmer who deals in hay and straw. A temporary driver went down a bad road on Dartmoor fully loaded and tipped over.



Contact Cannon Commercials on 01626 832548



Cannon Commercials Ltd

Service & Repairs to Commercial Vehicles, 24 Hr Recovery & Roadside Assistance

(24 Hr) 01626 832548
Fax: 01626 834345
info@cannonsouthwest.co.uk

Fairfax Road, Heathfield Industrial Estate, Newton Abbot, Devon TQ12 6UD

FAHEY'S of ST. AUSTELL



24hr Recovery for Heavy Commercials, Trucks, Bus & Coach. Air Cushion Recovery, PAS 43, ISO 9001 and NHSS17/17B

Tel. 01726 850538
Mobile. 07590 230452

Carne Cross, Par, St Austell, Cornwall. PL24 2SX
 email: faheysworkshop@gmail.com
 website: www.faheysrecovery.co.uk



Braefel Garage
 RECOVERY & BREAKDOWN

24 hr Recovery for Cars, Light Commercials & Motorcycles. Workshop, Servicing, MOT's General repairs, diagnostics, tyres

Call 01872 573129

Call 24 Hr 01637 878112 • www.braefelgarage.co.uk • info@braefelgarage.co.uk

Rejerrah, Newquay, Cornwall TR8 5QP



FAHEYS RECOVERY

You can see from the picture that we had a 4x2 Volvo Coach burnt out and requiring the rear of the coach lifting and pushing onto a Low Loader. Faheys Heavy Recovery arranged southwest operator Cannon Commercials from Newton abbot to assist and together loaded the coach and delivered it to its resting place.

Contact Faheys Recovery on 01726 850538
www.faheysconcreteltd.co.uk

Clyst Motors

Tel: 01392 340312
Mob: 07968 872825

24 hour recovery for cars, all commercials upto 44 ton. Horsebox, caravans, plant recovery. Workshop, storage, servicing & MOT preparation. PAS 43 and ISO 9001 accredited.



Unit 2 Waldrons Business Units, Farringdon, Exeter, Devon, EX5 2JX

24HR UK & EUROPEAN
CAR & HEAVY RECOVERY
01258 452595



Ashley Wood Recovery

DEPOTS AT BLANDFORD, DORCHESTER, PORTSMOUTH, TAUNTON & SALISBURY COVERING DORSET, DEVON, CORNWALL, SOMERSET, WILTSHIRE & HAMPSHIRE

24HR CALL CENTRE
WORKSHOP FACILITIES AVAILABLE

CLYST MOTORS

Clyst Motors are an independent insurance approved garage offering a wide range of services on almost every type of vehicle. Offering great value servicing and repairs to car, commercial and HGV's, 24hr Rescue and Recovery, accident and breakdown also roadside assistance and mobile tyre fitting, we also offer body repair and repaints.

We are a TerraClean service centre for both petrol and diesel engines. We are accredited with both PAS 43 and ISO 9001, 24 Hour Recovery. We have a wide range of recovery vehicles, discount on recovery cost if you leave your vehicle with us for repair, mobile tyre fitting now available. Secure vehicle storage, mobile tyre fitting, garage. Our garage has fully trained technicians with many years experience working on cars, vans and HGV's.



Contact Clyst Motors on 01392 340312 • www.clystmotors.co.uk

BRAEFEL GARAGE

Braefel Garage offer Garage Services in Rejerrah, near Newquay.

Situated on the A3075 between Goonhavern and Newquay, Braefel Garage offers a full range of automotive services for both private owners and trade customers.

Established in 1970, and taken over by the current family in 1987. Braefel Garage has become a popular and well-respected family-run garage serving drivers from Newquay to the Perranporth area, providing a full range of warranty and post-warranty vehicle servicing for all makes and models including electric as well as fleet solutions, MOT testing, electrical diagnostics and general repairs we offer a selection of car & van servicing options in Rejerrah, Near Newquay. Braefel Garage is an RAC Approved Garage.

Braefel Garage also provide a 24-hour breakdown recovery service.



Contact Braefel Garage on 01872 573129
www.braefelgarage.co.uk

ASHLEY WOOD RECOVERY

Ashley Wood Recovery is a family business formed in 1981 at the current site in Tarrant Keynston near Blandford. All manned by experienced staff specially trained in the latest recovery procedures.

The Ashley Wood 24 hr manned control room based centrally at our Dorchester Head Office controls our roadside technicians and recovery vehicles ensuring someone is at hand to deal with a breakdown or recovery day or night 365 days of the year.

Contact Ashley Wood Recovery on 01305 889421
www.ashleywoodrecovery.com



Publications

The Garage



To ensure you receive a printed copy of The Garage, visit our website and input your details. Don't forget the magazine is FREE to receive.

www.garageandmot.com

Training

BLACK STAR Certification services

PAS 43

We provide fully accredited PAS 43, ISO 9001 & NHSS 17 certificates

Contact us anytime by email or phone at Black Star Certification:
Email: office@bcert.co.uk | Telephone: 0113 3486572
www.bcert.co.uk

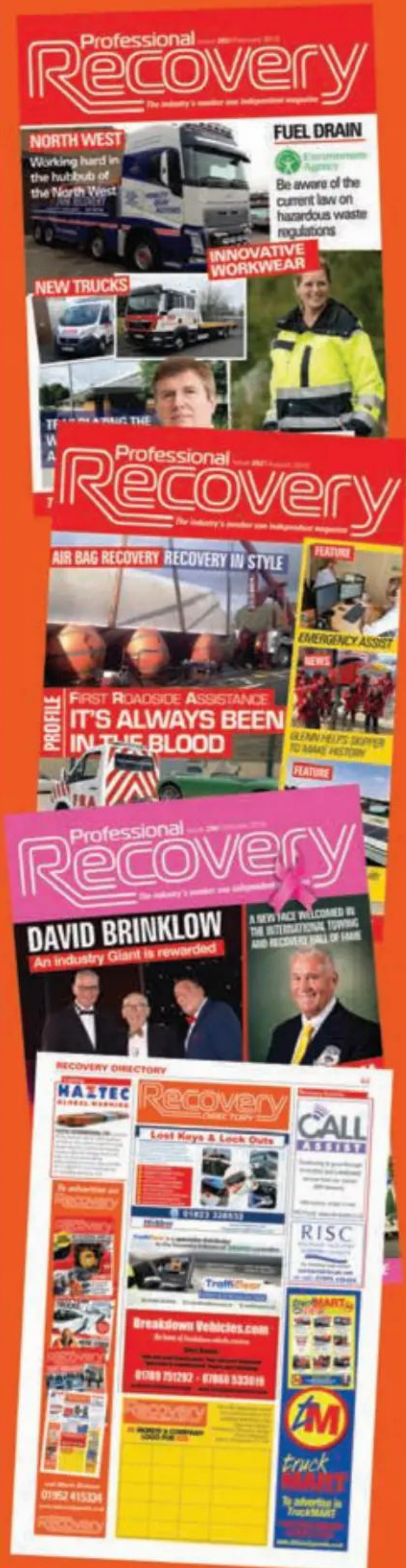
Recovery Services



Leading through innovation since 1998, we provide 100% of our work to our valued VRO network.

Find out more:
 Tel: 01206 771700
 Visit: www.call-assist.co.uk

To advertise on Recovery DIRECTORY



call Annie on
01732 904511



Garage Equipment

KEY PROGRAMMING & VEHICLE OPENING

Door Opening Tools

Top quality tools for lock-out situations



Lock Picks and Training



Key Programming Units



www.hickleys.com | sales@hickleys.com | 01823 328532 | **Hickleys**

Recovery Charity

RISC

RECOVERY INDUSTRY SUPPORT CHARITY

For immediate help contact:
contact@riscuk.net
 or call: 01895 436426

Recovery DIRECTORY

25 WORDS & COMPANY LOGO FOR £25

Fill in the details you would like published about your company and send to the following address: **Marie Dobson, Kelsey Media, Unit 14 M54 Space Centre, Halesfield, Telford TF7 4QN**



truck MART

To advertise in **TruckMART**
 Call **ANNIE MULCRONE**
01732 904511
annie@talk-media.uk

DON'T MISS THE NEXT ISSUE ON SALE 12TH NOV

Service Line

Contact Annie Mulcrone on 01732 904511

Vehicle Rental

RENTAL
Largest Dedicated Fleet of Recovery Vehicles For Hire

Need a RECOVERY Vehicle NOW!!!

Long or Short Term
No Contract

3.5 / 6.5 / 7.5 / 12 Ton
Tilt & Slide Transporters
Twin Deck Transporters
Full Demountables
Spectacle Lifts
Crew Cabs & Day Cabs
2nd Lifts / Tow Balls

Also,
Car Trailers
for Hire.

PHONE FOR QUOTE
01708 744 087
www.albertroadltd.co.uk

Angus

R&S Tel:- 01494 512955
Recovery Services

24 HR COMMERCIAL VEHICLE RECOVERY SPECIALISTS
HIGH WYCOMBE & MAIDENHEAD



Berwickshire

EYEMOUTH AUTOCENTRE

- Cars, Vans & Motorbikes
- Delivering Nationwide
- Full Workshop Facilities
- Specialist Winching
- Storage
- Diagnostic
- Fuel Drain
- MOT

24/7/365 RECOVERY, ACCIDENT & BREAKDOWN ASSISTANCE



Unit 1, Eyemouth Industrial Estate, Eyemouth, TD14 5AN

Tel: 018907 50554 (24hr)
web: accidentbreakdown.com
email: eyemouthautocentre@btconnect.com
find us on facebook 

Cornwall

4WINDS Garage

24 hour recovery for cars, light commercials and motorcycles, storage, workshop, servicing & MOT's. PAS43 ISO 9001.



Tel: 01872 510890
Mitchell, Newquay, Cornwall TR8 5AS

Co Londonderry

BURNSIDE GARAGE LTD. COLERAINE

24 HOUR



24 Hour Car & Commercial Recovery, Repairs, Automatic Transmission Rebuilders & Bosch Car Service Centre



Units 2 & 3, 24 Ballyrashane Road, Coleraine, BT52 3NL
www.burnsidegarage.org.uk - info@burnsidegarage.co.uk
0844 414 2471 - From ROI Tel: 048 7032 0723

Devon

COCKERHAM COMMERCIAL RECOVERY

24 hour recovery for all commercials



Bus, coaches & plant machinery. PSV. Secured storage. PAS 43. Full commercial workshop. Servicing & MOT's.

Tel: 01363 881000
Edworthys Yard, Johnsland, Bow, Credition, Devon. EH17 6HG

Edinburgh

Deejay Truck Repairs Ltd

24 hour recovery for cars and light commercials up to 18 tons.
Roadside rescue and repairs. Workshop, bodyshop, servicing, MOT preparation.
MOT class 4, 5 & 7 at workshop
Balden, Essex. Body work at Witham.



Tel: 07973 656204
Units 2 & 3 Dranslink, Askews, Askews Farm Lane, Grays, Essex RM17 5XR

Falkirk

ELITE RECOVERY

Falkirk Limited  **MOT STATION**



Exhausts
MOT's
Servicing
Brakes
Clutches
Engine
Repairs
Fuel Drains
Batteries

Tel: 01324 633 366
www.eliterecoveryfalkirk.co.uk
unit 9, Merchiston Ind Estate, Falkirk, FK2 7PD
elite-recovery@btconnect.com

Hampshire

Boarhunt Garage & Recovery Services

Tel 01329 282999
24 Hour rescue and recovery

Car and Commercial Workshop
On Site Training Department
Classic Car Storage
ISO9001 / PAS43
www.boarhunt.co.uk



Email - info@boarhuntrecovery.co.uk
Unit A/A1 Fort Wallington Ind Est Military Road Fareham PO16 8TT

Highlands

JOHN ELDER & SONS



24 hour recovery for cars, all commercials & motorcycles, workshop, servicing & MoT's, storage

Tel: 01593 731260
Market Hill, Dunbeath, Caithness, Scotland KW6 6EJ.
www.johnelderandsons.co.uk

South Wales

MILLFORGE

CAR & COMMERCIAL REPAIRS
24HR BREAKDOWN AND RECOVERY



LIGHT & HEAVY RECOVERY, CAR & COMMERCIAL REPAIRS, CLASSES 4, 5 & 7, MOT TESTING STATION

Tel. 01646 684599
Fax. 01646 622886
www.millforge.co.uk
STOCKWELL ROAD, LIANION PARK, PEMBROKE DOCK, PEMBROKESHIRE, SA72 6TQ

Surrey

NATIONAL RESCUE GROUP



24hr Recovery and Roadside Assistance for cars, motorcycles, caravans and light commercials up to 3.5 ton. Full workshop facilities for all servicing and MOT requirements. Fully ISO 9001 & PAS 43 accredited.

Tel: 020 8397 0325
www.nationalrescue.com

Portsmouth

TRACEYS RECOVERY LTD

24HR RECOVERY RECOVERY THOUGHTOUT ALL HAMPSHIRE, 365 DAYS



For Cars & Light Recovery & Electric Car Recovery VR027. Working for most leading insurance companies. PAS 43, IVR Certificates for Health & Safety & Roadside Assistance. Secured storage.

www.traceysrecoveryltd.co.uk
Tel: 07544 366 667
6 Claybank Road, Portsmouth, Hampshire. PO3 5NH

Swansea

KEN WILLIAMS RECOVERY

24HR
Heavy Recovery



Swansea
01792 587605
Carmarthen
01267 232399
www.kenwilliamsmotors.co.uk

West Sussex

QUEENS RECOVERY



24 hr recovery for cars, light commercials up to 5 ton. Caravans & Motorhomes, Motorcycles, Long Distance, Classic & Vintage cars.

07788 286354

Wrexham

HK MOTORS



24 HR RECOVERY FOR CARS, LIGHT COMMERCIALS & MOTORCYCLES. WORKSHOP, SERVICING & MOT PREPARATION. STORAGE.

Marions House, New Brighton, Minera, Wrexham, LL11 3DS
Tel: 01978 720843

Operators in Focus

Willenhall

AUTORITE



1

West Midlands

JACKSONS RECOVERY



2

Aberdeenshire

CARS RECOVERY



3

Lincolnshire

PETER & DAVID COSBY



4

Manchester

MANCHESTER BREAKDOWN SERVICES



5

Northamptonshire

K2 RECOVERY



6

Worcester

AUTO SUPPORT



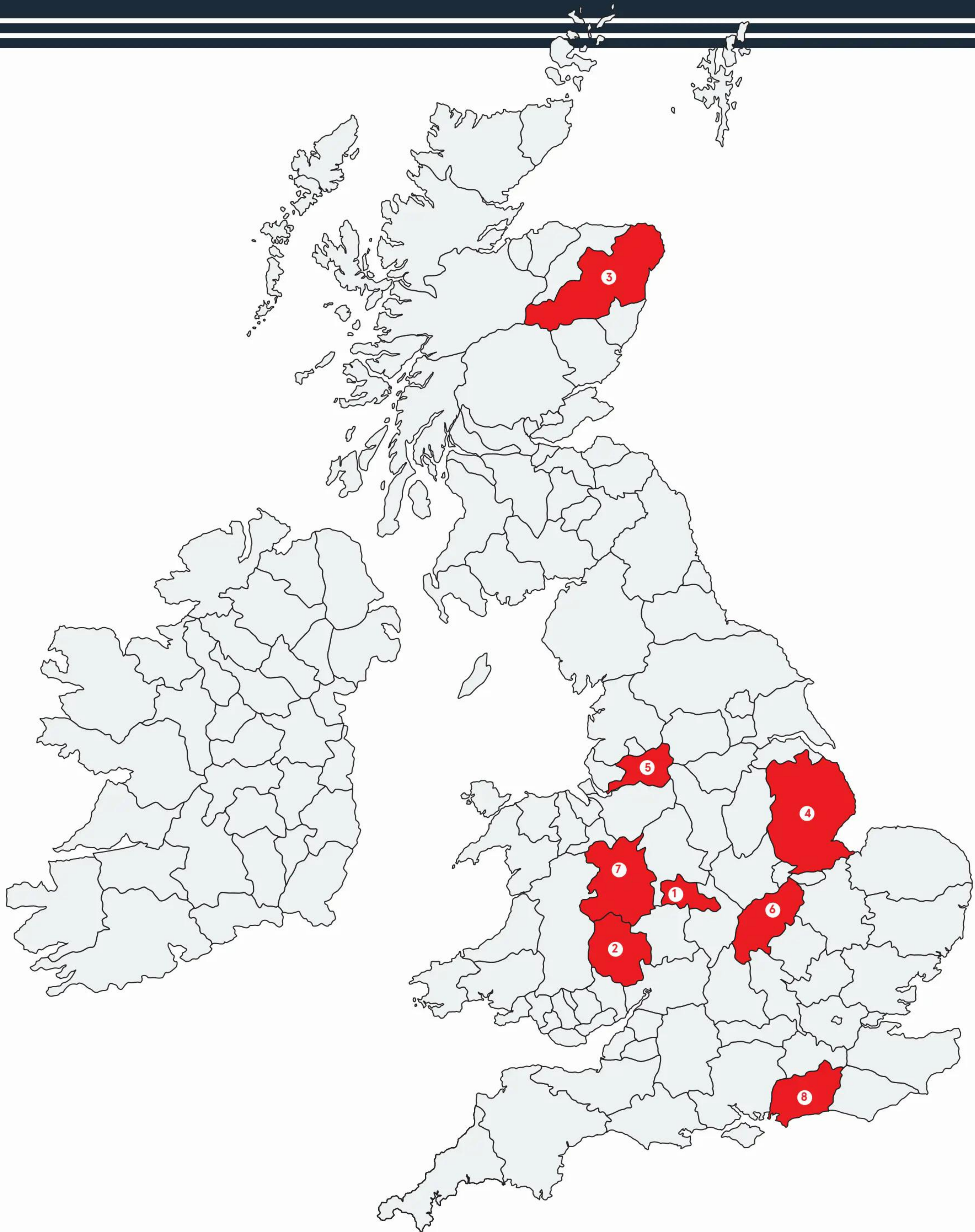
7

West Sussex

SOUTHERN RECOVERY



8



1. AUTORITE

(Willenhall Ltd) Unit 3, Morgan Close,
Ashmore Business Park, Willenhall, West
Midlands, WV12 4LH

TEL: 01902 637448

FAX: 01902 634697

2. JACKSONS RECOVERY

Northcote Road, Birmingham, West
Midlands, B33 9BH

TEL: 0121 3335555

3. CARS RECOVERY

Craigshaw Drive, Aberdeen, AB12 3AS

TEL: 01224 896500

Email: info@carsrecovery.com

4. PETER & DAVID COSBY

Hubberts Bridge Road, Kirtin Holme,
Boston, Lincolnshire, PE20 1TW

TEL: 01205 290666

Email: pdcosby@aol.com

5. MANCHESTER BREAKDOWN SERVICES

PO Box 15, Manchester.
M12 4AE

TEL: 0161 273 2000

FAX: 0161 2728500

6. K2 RECOVERY

10 Telford Way, Telford Way Industrial
Estate, Kettering, NN16 8UN

TEL: 01536 416997

Email: info@k2recovery.co.uk

7. AUTO SUPPORT

Hoo Farm Ind Es, Worcester Road,
Kidderminster, Worcestershire,
DY11 7RA

TEL: 08700 70777

8. SOUTHERN RECOVERY

Fairbridge Way, Burgess Hill, West
Sussex, RH15 8BF

TEL: 01273 833181

Aberdeen

SS WALKER RICHMOND GARAGE. Heavy underlift & winching contractor to commercial franchises. Sliding axle trailers, lorry cranes. Off road recovery. PAS 43 S.V.R.A. Member Tel: 01224 732568 - 24 hour mobile 07831 841024. Peterculter, Aberdeen AB14 0UP and Mossie Yard, Drumoak, AB31 5AT

Aberdeenshire

CAMPBELLS GARAGE LTD. 24hr Recovery service for cars, light commercials up to 5 ton and motorcycles. Off road recovery specialists, workshop servicing and mot testing station, PAS43, ISO9001, large secure storage facility 01779470053 24hr. Blackhouse Industrial Estate Peterhead. AB42 1BN

KINNONS GARAGE. 24 hour recovery for cars, light commercials upto 7 ton. Motorcycles. Off road recovery. Workshop, servicing, MOT's, general repairs. Secured storage. Tel: 01224 748167. Enterprise Drive, Westhill Ind Est, Westhill, Aberdeenshire, AB32 6TQ.

Argyll

LOCH SHIEL GARAGE. 24 hour recovery for cars, light commercials, heavy recovery & motorcycles. Full workshop facilities, service and MOT class 4 & 7. Storage. Tel: 01967 431246. Archaracl, Argyll, PH36 4JL.

Ayrshire

BARRY DEVLIN SERVICES. 24 hour breakdown service & recovery for motorbikes, cars, light & heavy commercials, off road specialists, HIAB winching and air cushions. Tel: 01563 536098. Wyndford Garage, Kilmaurs Road, Knockentiber, Kilmarnock KA2 0DJ.

Bedfordshire

CMG. 24 Hr Vehicle Assistance, Car & Commercial Roadside, Recovery Specialist. 70 Ton Rotator – Air Cushion – Recovery Backloads – STGO Low Loaders – Nationwide Fleet Assistance. Single & Multicar Transportation. Motorcycle Recovery & 24 Hr Tyre Services. Control Centre Tel: 0800-282-449. www.cmg-org.com

Bedford/Luton

Buckdale Limited. 24 Hr Recovery and Roadside Assistant for Cars ,Commercials and Coaches, MOT Testing , Workshop, covered External & internal storage. Tele 01234 272737 Mobile 07500 555799.

CMG. 24 Hr Vehicle Assistance. Car & Commercial Roadside, Recovery Specialist. 70 Ton Rotator – Air Cushion – Recovery Backloads – STGO Low Loaders – Nationwide Fleet Assistance. Single & Multicar Transportation. Motorcycle Recovery & 24 Hr Tyre Services. Control Centre Tel: 0800-282-449. www.cmg-org.com

LANTERN RECOVERY SPECIALISTS PLC. 24/7. Tel: 0844 247 6090. Roadside Breakdown, recovery and rescue for all types and sizes of vehicles. Nationwide and European coverage + network of agents, plant transportation, vehicle hire service. Out of hours handling service, secure storage and parking. www.lanternrecovery.com.

Richford Motor Services Ltd. 24hr recovery for cars, motorcycles, all commercials & coaches. Workshop, servicing & MOT's. Secured storage, Tyler House, Creasey Park Drive, Dunstable, Bedfordshire, LU6 1BB Tel: 01773 835192.

SAUNDERS GARAGE. Stofold Motor centre, 24 Hr Recovery and Roadside Assistance for Cars, Commercials and Coaches, MOT Testing, Workshop, covered External & internal storage.tel 01462 730222/01462 834222 mobile 07500 555799.

SHAWS RECOVERY LTD. 24 hour recovery of cars, commercials and buses. 129 London Road, Markyate, St. Albans, Hertfordshire AL3 8JR. 01582 840662 - 24 hours. www.shaws-recovery.co.uk

Berkshire

ND SERVICES. 24 hour recovery for cars, light & heavy commercials, motorcycles. 2 garages & workshops covering the Mile End, Lambourne, West Berkshire, Oxfordshire including Swindon, Hungerford, Newbury areas. MOT's and servicing, storage facilities. Tel: 01488 72118. Unit F, Ariel Business Park, Lambourn Woodlands, Membury, Berkshire, RG17 7RZ.

Online MBT. UK & European Recovery. 24 hour Vehicle Assistance, Car & Commercial Roadside Recovery, Commercial Roadside Tyre Vans, Low loader. Full Commercial Workshop facility and ATF MOT Station. Dover 01304 828 677 or e mail recovery@onlinembt.co.uk

ON POINT RECOVERY Ltd. 24hr Recovery For Cars, Light Commercials & Motorcycles. Service Van. Tel: 0800 031 4367. Tanners Compound, Swallowfield Road, Arborfield, Berkshire. RG2 9LA.

READING RECOVERY. 24hr Roadside Assistance for cars and light recovery. motorcycles service vans. Secured storage PAS 43 accredited. Tel 0118 4372414. Mill Farm, Sonning Eye, Reading RG46TR.

Buckinghamshire

CMG. 24 Hr Vehicle Assistance, Car & Commercial Roadside, Recovery Specialist. 70 Ton Rotator – Air Cushion – Recovery Backloads – STGO Low Loaders – Nationwide Fleet Assistance. Single & Multicar Transportation. Motorcycle Recovery & 24 Hr Tyre Services. Control Centre Tel: 0800-282-449. www.cmg-org.com

CONNOISSUER RECOVERY. 24 hr Recovery for Cars, Light Commercials, Caravans & Motorcycles. workshop, storage, tel 01296 906116. Rabans Lane, Aylesbury, Buckinghamshire. HP19 8RT

FIRST ROADSIDE ASSISTANCE. 24 hr Recovery and Roadside Assistance for Cars, Light Commercials & Motorcycles. Workshop Repairs, Tyre. PAS 43. and ISO 9001. tel 01494 529093. High Wycombe, Buckinghamshire. HP12 3RQ

R&S RECOVERY SERVICES. 24 hour recovery for cars, all commercials, coaches, workshop, servicing and MOT's. Preparation. Storage. Tel: 01494 512955. High Wycombe, Bucks SL7 3DJ.

Cambridgeshire

AASP RECOVERY. 24 hour recovery for cars, all commercials & motorcycles. Workshop, servicing & MOT's. Storage. Tel: 01733 221024. Unit 1 vicarage, farm road, Fengate, Peterborough, PE1 5TP.

EDAN RECOVERY. Depots at Jones Lane, Eastrea PE7 2AU, Stukeley Road, Huntingdon PE29 6HQ, Cowley Road, Cambridge CB4 0DN, Hadley Road, Sleaford NG34 7EG, Cliff Road, Ipswich IP3 0AY. 24HR Motorcycle, Car and Light Commercial Recovery, 24HR Control: 01733 351448.

MANCHETTS RESCUE & RECOVERY. (Part of the Manchetts Group) Depots at Cambridge, Bury St Edmunds. 24 hour Control. Tel: 01638 742987. Visit: www.manchetts.co.uk.

Cheshire

BOWERS RECOVERY. Wincham Avenue, Wincham Ind Est, Wincham, Northwich, Cheshire CW9 7SZ. 01606 46234.

POOLES TOWING & RECOVERY. For Light Commercials, motorcycles, lowered vehicles a speciality. Auto Locksmith services. PAS 43, ISO9002, NHSS17B. 24 hr CCTV Monitored storage. Tel 07758 911333. Pooles Yard, Brooks Lane, Middlewich CW10 0JG

Cleveland

RON PERRY A19 TEST AND TUNE. 24 hour recovery for cars, light commercials and motorcycles, workshop, MOT's, servicing, storage. Tel: 01740 644223. A19 Services, Elwick, Hartlepool, Cleveland TS27 3EG.

Cornwall

BRAEFEL GARAGE. 24 hr Recovery for Cars, Light Commercials & Motorcycles. Workshop, Servicing , MOT's .general repairs, diagnostics,tyres . tel 01637 878112. Rejerrah, Newquay, Cornwall. TR8 5QP

FAHEYS HEAVY RECOVERY. 24hr recovery for heavy Commercials, Trucks, Bus & Coach. Air Cushion Recovery, PAS 43. Tel. 01726 850538. mobile 07590 230452. Carne Cross, Par, St Austell, Cornwall. PL24 2SX. email faheysworkshop@gmail.com. website www.fahesy-recovery.co.uk

FOURWINDS GARAGE. 24 hour recovery for cars, light commercials and motorcycles, storage, workshop, servicing & MOT's. PAS43, ISO 9001. Tel: 01872 510890. Mitchell, Newquay, Cornwall TR8 5AS.

County Durham

FRED HENDERSON BREAKDOWN DOCTOR. 24hr recovery service for cars and vans up to 3.5 ton including accident, prestige covered, storage, workshop, bodyshop and motorsport specialist. Tel. 0191 384 6319 24hrs.

County Kilkenny

Hennessy's Garage. 24hr Breakdown & Recovery Service for Cars & Light Commercials. Workshop, Storage. Tel 00353 567725149. www.hennessysgarage.ie. lower Bridge Street, Callan, County Kilkenny, Republic of Ireland.

County Londonderry

BURNSIDE GARAGE LTD. 24Hr Recovery for Cars, All Commercials, Bus & Coach, Motorcycles. Workshop, servicing & MOT's. Prep. Storage. Automatic Transmission. Units 2 & 3, 24 Ballyrashane Road, Coleraine, Co. Londonderry, BT52 2NL. Tel: 0844 414 2471. Fax: 0844 414 2472. Email: info@burnsidegarage.co.uk. Visit: www.burnsidegarage.co.uk.

County Roscommon

MAGEES RECOVERY. 24 hr recovery for cars, light commercials & motorcycles. Workshop & bodyshop. Servicing & MOT preparation. Secured storage. Tel: 00353 719663141 / 00353 872430070. County Roscommon, Ireland. Fax 00353 719664361 email mageesrecoveryservice@yahoo.ie County Roscommon, Southern Ireland.

County Sligo

JAMES FOY AUTO SERVICE. 24Hr Breakdown Recovery for cars, all commercials, horsebox, caravans & motorcycles. Workshop, Delphi diesel service centre. Storage. Tel: 00353 9647052. Dromore West, County Sligo, Southern Ireland.

County Westmeath

HAMILLS RECOVERY. 24 hr Recovery and Roadside Assistance for cars, Light & Heavy Commercials,Bus/Coach, motorcycles. PAS 43, IVR Training operators. Workshop, servicing. Tel 00353 872527744.Old Dublin Road, Mullingar, Co. Westmeath , Ireland.

Coventry

CMG. 24 Hr Vehicle Assistance, Car & Commercial Roadside, Recovery Specialist. 70 Ton Rotator – Air Cushion – Recovery Backloads – STGO Low Loaders – Nationwide Fleet Assistance. Single & Multicar Transportation. Motorcycle Recovery & 24 Hr Tyre Services. Control Centre Tel: 0800-282-449. www.cmg-org.com

Cumbria

FURNESS CARS & COMMERCIALS LIMITED. Askam-In-Furness, 01229 465549, 24hr Roadside Assistance & Recovery for all types of vehicles, workshop facilities, portable computerised diagnostics, fully equipped mobile workshops, specialist recovery, Landoll Trailer, SLA's, motorcycle recovery, low line underlift, damage free hi-ab recovery, accident recovery, covering South Cumbria, The Lakes and North Lancashire. Email recovery@furness-cars.co.uk, www.furness-cars.co.uk

EUROROUTE RECOVERY. 24hr Recovery for Cars , All commercials, Bus & Coach, Horsebox, Caravan & motorcycles. Off road Recovery , Workshop. Servicing & Mot's . te; 01776 700999. covering Carlisle and Cumbria.

Derbyshire

GH MOTORS. 24 hour Recovery & Roadside Asst for cars, light & heavy commercial motorcycles and coaches. Accident units, service vans and cranes. Workshop servicing & MOT repairs. Storage. Roadside Asst for all Trailers plus workshop repairs. Large selection of trailer parts in stock, & Brake Chambers. Code reading for all vehicles. Fuel drains & curtain repairs. PAS43 Certified. Tel/Fax: 01246 826269. Mob: 07720 678021 Unit 4b, M1 Commerce Park, Duckmanton, Chesterfield, Derbyshire S44 5HS.

Richford MOTOR SERVICES LTD. 24 Hour for car and commercial vehicle recovery, repair, storage and workshop. Tel: 01773 835 192, Dunsford Road, Alfreton, Derbyshire, DE55 7RH.

Devon

Cannon Commercials Ltd. 24Hr Recovery for Light & Heavy Commercials. Bus & Coach. Fully equipped Workshop for Servicing & MOT Preparation. PAS 43. Air Bags, 65 ton low loader, underlift. Tel 01626 832548. Fairfax Rd, Heathfield Ind Est, Newton Abbot, Devon. TQ12 6UD.

COCKERHAM COMMERCIAL RECOVERY. 24 hour recovery for all commercials. Bus, coaches & plant machinery. PSV. Secured storage. PAS 43. Full commercial workshop. Servicing & MOT's. Tel: 01363 881000. Edworthys Yard, Johnsland, Bow, Credition, Devon. EH17 6HG.

HIGHFIELD GARAGE. 24 hour recovery for cars, light commercials and motorcycles, car hire, workshop, MOT testing and servicing, storage facilities. Tel: 01647 231248. Spreyton, nr Whidden Down, Okehampton, Devon EX17 5AF. Also depots at Okehampton, Unit 4, Hambledown Road, Exeter Road Industrial Estate, Okehampton EX20 1UB. Tel: 01837 52000.

Dorset

BOURNE TRANSPORT SERVICES. 24hr Accident Breakdown Service for Light Recovery, HGV Truck, Coach & Bus. Fleet Support. Heavy winching services for Heavy Recovery & Plant. Covering areas throughout Dorset and Hampshire. tel 01202 912949. Units 10-12 , Alder Hills, Poole, Dorset. BH12 4AL

GRS BREAKDOWN AND RECOVERY. for cars, light commercials, motorcycles, caravans and trailers. Keyless Car recovery, Vehicle Repossession, Dealer Transfers, Winching, Covered & multicar transporters available. Commercial Workshop, Secure Storage and 24hr Control roomand 24hr self drive car & van hire. Tel 1202 593939.Unit J Elliot Road, West Howe Trading Estate. Bournemouth. BH11 8JR.

HP Transport. 24 hr Recovery for Cars, Light Commercials, Motorbikes & Caravans. Commercial Workshop, Servicing & MOT's. Storage. Tel: 01202 576326. 21 Elliott Rd, West Howe Ind Est, Bournemouth, Dorset. BH11 8JU.

Dover

DUNKLEYS OF DEAL LTD. 24 hour recovery & roadside assistance for cars & all commercials, covering the Dover area. Tel: 01304 375403.

Online MBT. UK & European Recovery. 24 hour Vehicle Assistance, Car & Commercial Roadside Recovery, Commercial Roadside Tyre Vans, Low loader. Full Commercial Workshop facility and ATF MOT Station. Dover 01304 828 677 or e mail recovery@onlinembt.co.uk

Dumfries and Galloway

EUROROUTE RECOVERY. 24 hr Recovery for Cars, All Commercials, Bus /Coach, Horsebox, Caravans & motorcycles. Off Road Recovery. Workshop, Servicing & MOT's. tel 01776 700999. Garroch Business Park Dumfries DG2 8PN. Depots at Stranraer, Stirling, Johnstone-bridge & St Boswells - 24 hour call centre 01776 700999

East Sussex

A.LONG RECOVERY. on and off road recovery for all vehicles including cars, vans, buses, coaches, plant, light and heavy commercials up to STG03. Extreme off road heavy winching capabilities with our tracked recovery fleet. 24 hour service. Contact Andy Long on: 01435 830164 - Fax: 01435 831643. Email: along.recoveryworld@googlemail.com Website: www.alongrecovery.co.uk.

HOBBS RECOVERY. for cars, light commercials & motorcycles. Workshop, servicing & MOT's. Tel: 01323 416844. Chaucer Business Park, Dittons Road, Polegate, East Sussex, BN26 6JF.

East Yorkshire

BELL TRUCK SERVICES. 24 hour recovery for cars, motorcycles and all commercials, air cushions, fork lift truck and transhipping facilities, workshop and storage. Tel: 01482 861697. New Farm, Plaxton Bridge, Woodmansey, Beverley HU17 0RT.

Edinburgh

EUROROUTE RECOVERY. 24 hr Recovery for Cars, All Commercials, Bus /Coach, Horsebox, Caravans & motorcycles. Off Road Recovery. Workshop, Servicing & MOT's. tel 01776 700999. Garroch Business Park Dumfries DG2 8PN. Depots at Stranraer, Stirling, Johnstone-bridge & St Boswells - 24 hour call centre 01776 700999.

ROSEBANK GARAGE. 24 hr recovery for cars, All Commercials, Bus & Coach, Horsebox and motorcycles. Mob Crane. Storage, workshop, servicing MOT prep. Tel 0131 6575077. The Garage, 200 Sir Harry Lauder Road, Edinburgh. EH15 2QA.

Essex

DEEJAY TRUCK REPAIRS LTD. 24 hour recovery for cars and light commercials up to 18 tons. Roadside rescue and repairs. Workshop, bodyshop, servicing, MOT preparation. Tel: 07973 656204. Units 2 & 3, Translink House, Askews Farm Lane, Grays, Essex. RM17 5XR.

ITOW RESCUE & RECOVERY. iTow Rescue & Recovery - 24 Hr Roadside & Recovery Assistance for cars & vans throughout Essex. Recovery specialists in Electric Vehicles, Off Road Recovery, Repossessions, Water Rescue, Incident Management (Light & Heavy) and much more. Secure storage compound in Southend-on-Sea and Basildon, Essex. PAS43 - ISO9001 - NHSS17 - Tel: 01702 599093 - Web: www.itowrecovery.co.uk - ANS: 2221432

LANTERN RECOVERY SPECIALISTS PLC. Roadside Breakdown, recovery and rescue for all types and sizes of vehicles. Nationwide and European coverage + network of agents, plant transportation, vehicle hire service. Out of hours handling service, secure storage and parking. www.lanternrecovery.com Tel: 0844 247 6090.

LJ Transportation. 24/7 Heavy & Light Roadside & Recovery throughout Essex and surrounding areas. Depots at Southend, Brentwood, Chelmsford, Colchester and Ipswich. Retail, trade & club work accepted. Call 01621 730000 or email mick@ljtransportation.co.uk

Falkirk

Elite Recovery Falkirk. 24 HR Recovery for cars, Light Commercials, Motorcycles. MOT workshop, Servicing & MOT's. Fuel Drain, PAS 43. tel 01324 633 366. Unit 9, Merchiston Ind Estate, Falkirk. FK2 7PD. email: elite-recovery@btconnect.com

Fife

Fife Accident Repair Centre Ltd. incorporating Fife Recovery Services 24 hour breakdown recovery service for cars & Light commercial vehicles of gross weight up to 6 tonnes, motorcycles, Hiab damage free lifting Pass 43 registered covering Fife, Edinburgh, Lothians, Perth & Tayside. Workshop service MOT & Bodyshop repair facility's during normal business hours mon-Fri 8am-5pm. Tel 24 hrs 01592 655352 email farc247@btconnect.com Unit 7, Midfield Road, Mitchelston Industrial Estate, Kirkaldy, Fife. KY1 3NL

Greater Manchester

MOTOR MOVE Ltd. 24 Hr Recovery for Cars, Light Commercials. Roadside assistance, Workshop, PAS 43. O licence, SS17 & ISO 9001. Tel 0161 480 4166. Borough park, Stanley street, Stockport, Cheshire. SK1 2NE

Gloucestershire

BORDER RECOVERY. 24 hour recovery for cars, heavy commercials and coaches, workshop, servicing. Tel: 01531 650222 or mobile 07817 511673. Little London, Gloucester Road, Nr Ledbury, Herefordshire HR8 2JA.

Auto-Support Rogers Rescue. Depots in South Birmingham West Midlands Worcestershire & Cheltenham 24hr Car Commercial roadside vehicle assistance specialising in RTC on off road Prestige undercover & tow trax low loader movement Full HGV -Car workshops. Mots. Call control centre 08700707777. e.mail info@rogersrescue.co.uk www.rogersrescue.co.uk.

Gwynedd

BRADBURY'S GARAGE. 24 hour breakdown and recovery for cars, light commercials, motorcycles & caravans. Workshop & bodyshop, servicing & MOT's. Internal & external storage. Tel: 01341 280449. Park Road, Barmouth, Gwynedd, LL42 1PH.

HARDY'S RECOVERY. LTD 24 hour breakdown and recovery service for cars, light commercial, Heavy recovery, motorcycles, workshop, rotating crane, servicing and MOT. Tel: 01758 612121. Fax: 01758 614171 Glandon Industrial Estate, Pwllheli, Gwynedd LL53 5YT.

Hampshire

BOARHUNT GARAGE. Ltd 24 Hour recovery for cars, all commercials, bus & coaches and motorcycles. Storage, workshop, MOT's & servicing. Tel: 01329 282999. Military Road, Fareham, Hampshire, PO16 8TT.

MIDHURST ENGINEERING & MOTOR CO LTD. 24 Hr Recovery for Cars, Light Commercials & Motorcycles. Workshops and secure storage. Tel: 01730 812162. 60, Winchestser Rd, Stroud, Petersfield, GU32 3PL.

OWL MOTOR SERVICES Ltd. 24 Hr recovery Cars & Light Commercials, workshop and servicing. Secured storage. PAS 43, ISO 9001. Sector 17 -17B, Operator licence. tel 02392 736393. Richmond Road, South sea, Portsmouth, Hampshire. PO5 2LN

TRACEYS RECOVERY. 24hr Recovery Recovery though out all Hampshire, 365 days. For Cars & Light recovery & Electric Car Recovery VR027. Working for the most leading insurance companies. PAS 43, IVR Certificates for Health & Safety & Roadside Assistance. Secured storage. Tel 0754 4366667. 6 Claybank Road, Portsmouth, Hampshire. PO3 5NH

Herefordshire

BENNETTS VEHICLE SERVICES. 24hr Garage & recovery for cars, light Commercials & motorcycles. workshop, MOT's and servicing. PAS 43. Tel. 01432 805300. Units 1&2 Brinsop Court Building, Brinsop, Herefordshire HR4 7AX.

BORDER RECOVERY. 24 hour recovery for cars, heavy commercials and coaches, workshop, servicing. Tel: 01531 650222 or mobile 07817 511673. Little London, Gloucester Road, Nr Ledbury, Herefordshire HR8 2JA.

Hertfordshire

BUCKDALE LIMITED. 24hr recovery and Roadside Assistance for Cars, commercials & Coaches. workshop, covered external & internal storage. Tel 01234 272737. Mobile 07500 55579.

CONNOISSUER RECOVERY. 24 hr Recovery for Cars, Light Commercials, Caravans & Motorcycles. workshop, storage, tel 01923 770900. Olds Approach, Tolpits Road, Watford Hertfordshire WV18 9TS. 12 Eastman Way, Hemel Hempstead, HP2 7DU. Tel 01923 770900

LANTERN RECOVERY SPECIALISTS PLC. M25/A1M 24/7 phone 0844 247 6090. Roadside breakdown, recovery and rescue for all types and sizes of vehicles. Nationwide and European coverage + network of agents. Plant transportation, vehicle hire service, grab lorry service. Out of hours call handling service. Secure storage and parking. www.lanternrecovery.com.

MOTOR SERVICES WATFORD LTD. 24 hr Recovery for Cars & Light Commercial Vehicle Recovery, Vans motorcycles, Caravan & trailers, offering a 24hr mobile tyre replacement Service, Fully equipped Garage, PAS 43 Registered, with Storage facilities. Tel 01923 244893. Office 28, CP House, Otterspool Way, Watford, Herts. WD25 8HR.

SAUNDERS GARAGE. Stotfold Motor centre, 24 Hr Recovery and Roadside Assistance for Cars, Commercials and Coaches, MOT Testing, Workshop, covered External & internal storage. Tel. 01462 730222/01462 834222 mobile. 07500 555799.

SHAWS RECOVERY LTD. 24 hour recovery of cars, commercials and buses. 129 London Road, Markyate, St. Albans, Hertfordshire AL3 8JR. 01582 840662 - 24 hours. www.shaws-recovery.co.uk

Highlands

FORBES GARAGE. 24 hour recovery for cars & all commercials, wokshop, servicing, MOT testing & storage. Tel: 01445 731200. The Garage, Aultbea, Ross-Shire, IV22 2JA.

JOHN ELDER & SONS. 24 hour recovery for cars, all commercials & motorcycles, workshop, servicing & MOT's, storage. Tel: 01593 731260. Market Hill, Dunbeath, Caithness, Scotland KW6 6EJ.

Huntingdon

EDAN RECOVERY. Depots at Jones Lane, Eastrea PE7 2AU, Stukeley Road, Huntingdon PE29 6HQ, Cowley Road, Cambridge CB4 0DN, Hadley Road, Sleaford NG34 7EG, Cliff Road, Ipswich IP3 0AY. 24HR Motorcycle, Car and Light Commercial Recovery, 24HR Control: 01733 351448.

Inverness-shire

ADJ STEVENSON. Ardloch, Gairloch, Spean Bridge, Inverness-shire PH34 4EQ. 24 hour recovery for cars, light and heavy commercial. Tel: 01397 712257 Fax: 01397 712856.

Isle of Wight

BARTLETTS SERVICE STATION-24/7. Roadside/Recovery. + RTC specialist repairs on all cars/commercials including bus / coach. Secure storage compound under cctv. fully equipped workshop. Vehicle deliver-

ies on the Isle of Wight/UK and Europe undertaken. Bodyshop/hire. Vans/commercial sales/Loan cars/vans available. VOSA ATF HGV test station. PAS 43: 2015 and ISO 9001 :2015.NHSS 17B. 24 hr control room (01983)865338. Email: Bartlettsiow@aol.com web www.Bartlettservicestation.co.uk. ISLE of WIGHT PO360NP.

D. H. Price Motors. 24-7 Roadside & recovery assistance for all types of cars, light commercials, HGV, buses, coaches, motorhomes & horseboxes. Island-wide & to or from the Isle of Wight. State of the art workshops for repairs, MOT & servicing, fuel drain, DVSA ATF station, secure storage with CCTV. ISO 9001 and PAS 43 accredited. Tel 01983 400247, email: rescue@24-7recovery.com www.dhpricemotors.com

Kent

ASHFORD RECOVERY LTD. 24 hour recovery for cars and commercials, storage facilities. Tel: 01233 655999. Carlton Road, Cobbs Wood Ind. Est. Ashford, Kent TN23 1DP.

Knights Recovery. 24hr Recovery for Cars, Light Commercials, Horsebox, Caravans & Motorcycles. European Recovery. Trade Plate Services. Transportation. Unit C3, Deal Enterprise Centre, Western Road, Deal, Kent. CT14 6PJ. tel 0800 1182984. mobile 07716 342601. email: jim@knightsrecovery.com website: www.knightsrecovery.com.co.uk

Online MBT. UK & European Recovery. 24 hour Vehicle Assistance, Car & Commercial Roadside Recovery, Commercial Roadside Tyre Vans, Low loader. Full Commercial Workshop facility and ATF MOT Station. Dover 01304 828 677 or e mail recovery@onlinembt.co.uk

ROAD RUNNERS RECOVERY SERVICE. Mount Ross Farm, Main Road, Knockholt, Sevenoaks, Kent TN14 7NT. Full workshop, bodyshop and storage facilities. MOT testing. Tel: 01959 534030. Email: enquiries@roadrunnersrecovery.co.uk.

SILVERBACK RECOVERY. 24 hour recovery for cars, light commercials and motorcycles, storage, transportation for classic cars. Tel: 01622 813733. Mobile: 07740 123495. 2 Glebe Meadow, Wateringbury, Maidstone, Kent ME18 5DE.

Lancashire

J.D Macadam & Son (Rescue) Ltd. Depots throughout Lancashire, North & West Yorkshire and Cumbria (Carlisle depot). 24hr rescue & recovery for motorbikes, light, heavy & P.S.V. Tel: 0370 428 5191 (24hr control room).

M6 RECOVERY. 24 Hr control room. Car & Light Commercial recovery. Roadside assistance, Accident Recovery, PAS 43, secure storage. Tel 01524 487 203. Unit, the old Gas Works, Cannon Gate, White Lund Ind Estate. Morcombe, Lancashire. LA3 3BZ.

MILLERS OF LONGTON LTD. Nationwide Commercial vehicle breakdown assistance and recovery. Fully staffed 24 hour, 365 day control room based in the North West. Supported by a comprehensive network of over 600 agents, including tyre suppliers, fridge and trailer specialists. Service vans, recovery vehicles, low loaders, tractor units available for hire, off road winching etc. Covering for motorcycles to heavy commercial vehicles. Tel: 01772 613195. Fax: 01772 612102

Leicestershire

CROUCH RECOVERY. Tel: 01162 792245. Car and Commercial Recovery Service. Specialist in Heavy Recovery, Mobile Cranes upto 75 tonne, rotators upto 75 tonne, Coach Trailers, Heavy Haulage Trailers, winch tractors, Air cushions, Incident management, Service Van and Workshops. Warehousing & Load Handling equipment, Telehandlers, Roll on-off bins, skips, Grab Lorries, Diggers, Bulk Tip-pors etc... Depots throughout Leicestershire.

Richford Motor Services Ltd. 24hr recovery for cars, motorcycles, all commercials & coaches. Workshop, servicing & MOT's. Secured storage. 35 Chartwell Drive, Wigston,

MEET THE

Professionals

Leciester, LE18 2FL 01773 835 192

Lincolnshire

GALLOW'S WOOD RECOVERY. - North Lincolnshire's premier recovery operator, established 1963. 24/7 breakdown, recovery and transportation service for motorcycles, cars, vans, trucks, buses and coaches. Specialist services include; off road recovery of plant and agricultural equipment, air cushions, covered transportation and low loader. Secure parking. O license holder, ISO 9001, PAS 43. MOT preparation and service for cars, vans, trucks and trailers. Tel: 01652 688259. Barnetby, North Lincolnshire, DN38 6DW.

Richford MOTOR SERVICES LTD. 24hr recovery for cars, motorcycles, all commercials & coaches. Workshop, Bodyshop, servicing & MOT's. Secured storage. Tel: 01673 862 436 Woodlands Business Centre, Lincoln Road, Lincoln, LN2 3PZ

TEARS RECOVERY. Car and commercial recovery specialists, Gosberton Road, Surfleet, Spalding, Lincolnshire, PE11 4AB. Tel: 01775 840452

London

Force Recovery Ltd. 24/7 Roadside Rescue and Recovery Assistance. Commercial Vehicle Specialist. Light commercials, heavy commercials, commercial service van, 4x4 assistance and storage facilities. Covering London, Essex and the South East. Tel: 0208 935 5542. Pick Hill, Waltham Abbey, Essex, EN9 3LE

RECOVERYMEN LTD. 24 hour Recovery & Roadside assistance for heavy recovery, Wreckers, Street Lifters, tilt & slides. storage. tel 08448 002801.

ROAD RUNNERS RECOVERY SERVICE. 81 High Street, Green Street Green, Orpington, Kent BR6 6BJ. 24 hour recovery and roadside assistance of bikes, cars and light commercials. Full workshop, bodyshop and storage facilities. MOT testing. Tel: 01689 861429. Email: enquiries@roadrunnersrecovery.co.uk.

TYREMEN UK LTD. 24 hour Roadside Assistance. suppliers of tyres for agricultural, plant, truck, car, vans. tel 0208 4524044. 721 North Circular Rd, Staples Corner, London. NW2 7AH

Londonderry/Northern Ireland

CURRY'S GARAGE. 24 hour roadside assistance & recovery for cars, vans & motorcycles. Roadside assistance for heavy commercials. Full workshop facilities, MOT, servicing & repairs. Secured storage outside & inside. PAS 43 accredited. www.currys-garage.co.uk. Tel: 02871 810567. 13 Edenreagh Rd, Eglinton, Londonderry, Northern Ireland, BT47 3AS.

London/E11

LANTERN RECOVERY SPECIALISTS PLC. Tel: 0870 60 90 333. Rescue for all types and sizes of vehicles. Nationwide and European coverage + network of agents. Plant transportation, vehicle hire service, grab lorry service, out of hours call handling service. Secure storage and parking www.lantern-recovery.com 24 hour UK and European control room, plant transportation, caller handling, emergency car hire service tel 0870 609 033.

Manchester

BROADHEATH RECOVERY SERVICES Ltd. 24 hr Recovery for Cars and Commercials up to 14t. Secure monitored storage facility. Professional and reliable. Specialist movement of vehicles without keys. ISO 9001. TEL 0161 9627450. APEX NODE 2220667 - Higher Rd, Urmston, M41 9AP

MANCHESTER BREAKDOWN SERVICES

LTD. 24 hour recovery and roadside assistance for car & commercial vehicles, off road recovery, storage, bus and coach specialists, workshop, PAS43 & ISO9001, service vans, heavy recovery, any problem solved. We have a National Operators Licence. Tel: 0161 273 2000. Fax 0161 272 8500. Email: john@manchesterbreakdown.co.uk

RIJ - Manchester Vehicle Movements. 24hr Recovery and Transportation for cars and commercials up to 5 tons. 'O' Licence, workshop, secure monitored storage. Unit 3 Trafford Distribution Centre, Trafford Park, Manchester, M17-1JT. Tel: 07966 242525 / 07976270738

Merseyside

Recovery North West. 24 hr Recovery for Motorcycles, Cars & Heavy Commercial. PAS 43 ISO 9001, Covering Merseyside, Cheshire & North Wales. Tel 0151 6091118. www.recoverynorthwest.com

Middlesex

LANTERN RECOVERY SPECIALISTS PLC. 24/7. Tel: 0844 247 6090. Roadside Breakdown, recovery and rescue for all types and sizes of vehicles. Nationwide and European coverage + network of agents, plant transportation, vehicle hire service. Out of hours handling service, secure storage and parking. www.lanternrecovery.com.

Milton Keynes

CMg. 24 Hr Vehicle Assistance, Car & Commercial Roadside, Recovery Specialist. 70 Ton Rotator - Air Cushion - Recovery Backloads - STGO Low Loaders - Nationwide Fleet Assistance. Single & Multicar Transportation. Motorcycle Recovery & 24 Hr Tyre Services. Control Centre Tel: 0800-282-449. www.cmg-org.com

Morayshire

SHERIFFMILL MOTOR CO LTD. 24 Hr breakdown recovery for cars, all commercials, coaches & motorcycles. Airbags. Workshop facilities, servicing & MOT's. Storage Tel: 01343 547378 or 01343 547121 24 hours. Sheriffmill Road, Elgin, Morayshire IV30 3UH.

Nationwide

CMG. 24 Hr Vehicle Assistance, Car & Commercial Roadside, Recovery Specialist. 70 Ton Rotator - Air Cushion - Recovery Backloads - STGO Low Loaders - Nationwide Fleet Assistance. Single & Multicar Transportation. Motorcycle Recovery & 24 Hr Tyre Services. Control Centre Tel: 0800-282-449. www.cmg-org.com

LANTERN RECOVERY SPECIALISTS PLC. 24/7 Nationwide and European roadside breakdown, rescue and recovery service for ALL types of vehicles. Storage and workshop facilities available nationwide. ONE CALL DOES IT ALL - 0870 60 90 333 www.lrs.uk.com

MILLERS OF LONGTON LTD. Nationwide Commercial vehicle breakdown assistance and recovery. Fully staffed 24 hour, 365 day control room based in the North West. Supported by a comprehensive network of over 600 agents, including tyre suppliers, fridge and trailer specialists. Service vans, recovery vehicles, low loaders, tractor units available for hire, off road winching etc. Covering for motorcycles to heavy commercial vehicles. Tel: 01772 613195. Fax: 01772 612102.

Nationwide Vehicle Assistance. part of the Nationwide Assistance Group. Accident Recovery specialists for cars & commercial vehicles throughout the UK and Europe. Specialising in ADR Vehicle Recovery. www.

nationwideassistancegroup.co.uk. Agents required network@nwva.co.uk For Assistance call our 24/7 operations Centre on 01621 730009

Newark

Richford MOTOR SERVICES LTD. 24 Hour for car and commercial vehicle recovery, repair, storage and workshop. Tel: 01773 835 192, 285, Bowbridge Road, Newark, NG24 4EQ.

Norfolk

TEARS RECOVERY. Cars and commercial specialist. Fresian Way, Kings Lynn, Norfolk PE30 4JQ. Tel: 0800 7312905.

PJ Kerley Recovery. 24hr Recovery for cars, all commercials & Motorcycles. MOT Bay, servicing, repairs and secured storage. Tel: 01493 853027. PAS 43 ISO 9001. A1 Euro Centre, North River Rd, Great Yarmouth, NR30 1TE. Depot and Great Yarmouth and Norwich. Tel: 01603 486668.

North Lincolnshire

GALLOW'S WOOD RECOVERY. - North Lincolnshire's premier recovery operator, established 1963. 24/7 breakdown, recovery and transportation service for motorcycles, cars, vans, trucks, buses and coaches. Specialist services include; off road recovery of plant and agricultural equipment, air cushions, covered transportation and low loader. Secure parking. O license holder, ISO 9001, PAS 43. MOT preparation and service for cars, vans, trucks and trailers. Tel: 01652 688259. Barnetby, North Lincolnshire, DN38 6DW.

North Wales

BRADBURY'S GARAGE. 24 Hr Recovery for cars, motorcycles & light Commercials. Workshop, MOT's & service. Secured Storage. Tel: 01341 280449. Park Road, Barmouth, Gwynedd, North Wales, LL42 1PH.

HARDY'S RECOVERY LTD. 24 hour breakdown and recovery service for cars, light commercial, Heavy recovery, motorcycles, workshop, rotating crane, servicing and MOT. Tel: 01758 612121. Fax: 01758 614171 Glandon Industrial Estate, Pwllheli, Gwynedd LL53 5YT.

HK MOTORS. 24 Hr Recovery for cars, light commercials & motorcycles. Workshop, servicing & MOT Preparation. Storage. Tel: 01978 720843. Marions House, New Brighton, Minera, Wrexham, LL11 3DS.

Tilery Garage. 24 Hr Roadside Assistance & Recovery for Cars, Motorcycles & Commercials upto 7.5 ton. Workshop & Servicing for Vans & Commercial Vehicles Upto 7.5 ton. MOT's. Storage. Tel 01745 353424. St Asaph Ave, Kinmel Bay, Conwy, North Wales. LL18 5EU.

North Yorkshire

LOWES BREAKDOWN & RECOVERY. 24Hr Breakdown Recovery for cars, light commercials & motorcycles. Recovery continuation. Workshop, servicing & MOT preparation. Mobile accident unit. Tel: 01748 812280. Station Road Garage, Brompton on Swale, Richmond, North Yorkshire, DL10 7HN.

Northern Ireland



24HR NATIONWIDE LIGHT AND HEAVY RECOVERY
Cars, Vans, Commercials, Motorcycles, Aviation, Plant Equipment, Motorsport

WORKSHOP FACILITIES
Cars & Commercials, Car and Van MOT Centre
Approved Tachograph Centre

24HR CALL CENTRE
Nationwide Recovery Services, Call Centre Management
Fleet Breakdown/Accident Management, Industry Training



0870 122 4000 www.dgassist.co.uk

BURNSIDE GARAGE LTD. 24hr Recovery for Cars, All Commercials, Bus & Coach, Motorcycles. Workshop, servicing & MOT's. Prep. Storage. Automatic Transmission. Units 2 & 3, 24 Ballyrashane Road, Coleraine, Co. Londonderry, BT52 2NL. Tel: 0844 414 2471. Fax: 0844 414 2472. Email: info@burnsidegarage.co.uk. www.burnsidegarage.co.uk.

JOHN BEERS CAR & COMMERCIAL RECOVERY. 24 hour recovery for cars, commercials and motorcycles, workshop, servicing, MoT and PSV work, load transfer. Tel: 02897 521542. 42 Drumhirk Road, Comber, Co. Down, Northern Ireland BT23 5NN. PAS 43. ISO 9001.

Northampton

CMG. 24 Hr Vehicle Assistance, Car & Commercial Roadside, Recovery Specialist. 70 Ton Rotator – Air Cushion – Recovery Backloads – STGO Low Loaders – Nationwide Fleet Assistance. Single & Multicar Transportation. Motorcycle Recovery & 24 Hr Tyre Services. Control Centre Tel: 0800-282-449. www.cmg-org.com

Northamptonshire

ABLE ASSIST LTD, (Auto Breakdown Logistics Experts). Covering Northamptonshire, Bedfordshire and Buckinghamshire, 24hr Roadside Assistance, Breakdown and Accident Recovery, Transportation, Secure Storage, Workshop, Servicing, Suppliers of Tyres for Motorcycles, Cars and Light Commercial Vehicles. A: Able House, Unit 1, 50 Bradfield Road, Wellingborough, Northamptonshire, NN8 4HB T:01933 837999. E:control@able-assist.co.uk. W:able-assist.co.uk

CMG. 24 Hr Vehicle Assistance, Car & Commercial Roadside, Recovery Specialist. 70 Ton Rotator – Air Cushion – Recovery Backloads – STGO Low Loaders – Nationwide Fleet Assistance. Single & Multicar Transportation. Motorcycle Recovery & 24 Hr Tyre Services. Control Centre Tel: 0800-282-449. www.cmg-org.com

CROUCH RECOVERY. Tel: 01162 792245. Car and Commercial Recovery Service. Specialist in Heavy Recovery, Mobile Cranes upto 75 tonne, rotators upto 75 tonne, Coach Trailers, Heavy Haulage Trailers, winch tractors, Air cushions, Incident management, Service Van and Workshops. Warehousing & Load Handling equipment, Telehandlers, Roll on-off bins, skips, Grab Lorries, Diggers, Bulk Tippers etc...

K2 RECOVERY. LTD 24 hour breakdown recovery for cars, all commercials, busses/coaches & motorcycles. Fully equipped service vans to carry out curtain repairs. EBS diagnostics, welding and all other repairs. Fully equipped car and commercial workshops including brake roller testing for upto 44 ton. Secure storage facilities. Tel: 01536 416997/ 01535 412723.

Norththumberland

ALPHA RECOVERY LTD. 24 hr Recovery Service. We Recover all types of LGV. cranes, coaches, buses, light commercials and cars. Our comprehensive service includes air cushions, incident / accident unit, bus and coach trailer, 4x4 Unimog, 6x6 Foden, 8x6 Leyland Daf, heavy winching units. 50 tonne Rotator, JCB and All Terrain Forklift. Weetslade Industrial Est Dudley, Cramlington, Norththumberland. NE23 7PS. Tel 0191 2500009. www.alpharecovery.net

UNIVERSAL GARAGE. 24hr recovery for cars, light recovery & motorcycles. Workshop, servicing & MOT's. Storage facilities. Tel: 01670 813113. Rear of 160 Woodhorn Road, Ashington, Norththumberland, NE63 9EN.

Norwich

DELMONTE GARAGE. 24 hour recovery for cars, all commercials, motorcycles and coaches, workshop, servicing, MOT's and storage. Tel: 01603 426746. Unit 35, Concorde Road, Norwich NR6 6BE.

PJ KERLEY RECOVERY. 24 hour recovery for cars, all commercials, coaches and motorcycles. MOT bay, servicing, repairs and secured storage. Tel: 01603 486668. PAS 43 ISO 9001. 11 Burnet Rd, Sweetbriar Ind Est. Norwich, NR3 2BS. Depot at Great Yarmouth & Norwich. Tel: 01493 853027.

Nottinghamshire

NOTTINGHAM BREAKDOWN & RECOVERY SERVICE. 24 hour recovery for cars and all commercials. Workshop, storage and repairs. Covered transporters international operators license. Tel: 0115 961 9161. 11 Great Northern Way, Netherfield, Nottingham NG4 2HG. www.nottinghambreakdownservice.co.uk contactus@nottinghambreakdownservice.co.uk

Richford MOTOR SERVICES LTD. 24 Hour for car and commercial vehicle recovery, repair, storage and workshop. Fulwood Close, Fulwoods Rd, South Huthwaite, Nottinghamshire, NG17 2HZ. Tel: 01623 556868

Richford MOTOR SERVICES LTD. 24 Hour for car and commercial vehicle recovery, repair, storage and workshop. Lodge Lane Industrial Estate, Lodge Lane, Tuxford, Newark, Notts, NG22 0NL Tel: 01777 872 177.

Oxfordshire

WESSEX RECOVERY. 24hr Roadside assistance for Cars & light Commercial Recovery, Motorcycles, Service Vans, Secured storage, PAS 43 Accredited, Tel 0118 4372414. Pioneer Road, Faringdon, SN7 7BU.

Peterborough

EDAN RECOVERY. Depots at Jones Lane, Eastrea PE7 2AU, Stukeley Road, Huntingdon PE29 6HQ, Cowley Road, Cambridge CB4 0DN, Hadley Road, Sleaford NG34 7EG, Cliff Road, Ipswich IP3 0AY. 24HR Motorcycle, Car and Light Commercial Recovery, 24HR Control: 01733 351448.

Powys

RICHARD YORKE LTD. 24 hour recovery for cars, all commercials, coaches, motorcycles and horsebox. Workshop, servicing and MOT's. Storage. Tel: 01686 627820 / 07967 649699. Peshwa Garage, Peshwa Lane, Newtown, Powys, Mid Wales, SY16 3LY.

Scottish Borders

Euroroute Recovery Charlesfield Industrial. Estate, St Boswells TD6 0HH. Tel: 01776 700999

Shropshire

BUCKLEY MOTORS. Roadside Rescue & Recovery Specialists for Cars & Light Commercial, Motorcycles, Horsebox. PAS 43, ISO 9001. NHSS 17+17B. All Staff IVR Trained. CCTV Monitored & Alarmed Large Storage including Undercover Facilities with Workshop and Customer Waiting Room. Tel 24/7 Control: 01952 813444 / 01785 282777 – Newport, Shropshire TF10 – 8 miles from M54 J3 – www.buckleymotors.co.uk

Ruby Vehicle Services. 24hr Roadside & Recovery for Cars, Light & Heavy Commercials, Caravans, Horsebox, Transportation & Motorcycles. PAS 43, ISO 9001, O Licence. covering Mid Wales, Shropshire and the surrounding counties. Tel 07960 960730.

South East Scotland

EYEMOUTH AUTOCENTRE. 24 hour recovery for cars, light commercials and motorcycles. Workshop service MOT's. Accident repair centre, storage. Tel: 01890 750554. Unit 1 Ind. Est. Coldingham Road, Eyemouth, Berwickshire TD14 5AN.

South Wales

KEN WILLIAMS MOTORS. 24 hour breakdown recovery for cars, light and heavy commercials. Tractors, airbags and cranes. Heavy lifting gear. Vehicle repairs. Unit 2, Kingsway, Forestfach Ind. Est. Swansea, South Wales SA5 4DL. Tel: 01792 587605. Riverside Yard, Old Llanynor, Carmarthen SA31 2BD. Tel: 01267 232399.

Penllain Garage & Recovery service. HGV Roadside & Recovery Services. Accident & Insurance work undertaken . upto 44 ton GVW. Light Commercials, Caravans, Fuel Drain. workshop, servicing , Repairs & MOT prep.tel 01239 831393. Hermon, Glogue, Pembrokeshire, South Wales. Pembrokeshire. SA36 0DS.

Millbrook Recovery Ltd. 24 hr Recovery for Cars, Light Commercials. Caravans & Motorcycles. Workshop, Servicing & MOT,s. Covering Swansea & Carmarthen tel 01792 561007. Bruce Road, Swansea Industrial Park. Fforestfach, Swansea. SA5 4HS

MILLFORGE LTD. 24 hour recovery for cars & commercials. Workshop, servicing, MOT's. Storage. Tel: 01646 684599. Stockwell Road, West Llanion Park Ind Est, Pembroke Dock, Pembrokeshire, SA72 6TQ.

South Yorkshire

GH MOTORS. 24 hour Recovery & Roadside Assistance for cars, light & heavy commercial motorcycles and coaches. Accident units, service vans and cranes. Workshop servicing & MOT repairs. Storage. Roadside Assistance for all Trailers plus workshop repairs. Large selection of trailer parts in stock, including Airbags & Brake Chambers. Code reading for all vehicles. Fuel drains & curtain repairs. PAS43 Certified. Tel: 01246 826269. Mob: 07720 678021. Unit 4b, M1 Commerce Park, Duckmanton, Chesterfield, Derbyshire, South Yorkshire. S44 5HS.

GVS 24HR RECOVERY & ROADSIDE ASSISTANCE. For motorbikes, cars, 4x4's & light commercials. Three sites in Rotherham allowing us to offer vehicle storage. Car & commercial workshop facilities. MOT's Class 4 & 7 vehicles. Tel: 01709 610016. Mob: 07810 122827. Recovery Court, Greaves Road, Rotherham, S61 1SZ. www.gvsrecovery.co.uk. Email: info@gvsrecovery.co.uk Inc. Central Garage (Kiveton) in Sheffield Tel: 01909 260000

Richford MOTOR SERVICES LTD. 24hr recovery for cars, motorcycles, all commercials & coaches. Workshop, servicing & MOT's. Secured storage. Tel: 01773 830008. 12 Farfield Park, Manvers, Rotherham, S63 5DB.

Staffordshire

BUCKLEY MOTORS. Roadside Rescue & Recovery Specialists for Cars & Light Commercial, Motorcycles, Horsebox. PAS 43, ISO 9001. NHSS 17+17B. All Staff IVR Trained. CCTV Monitored & Alarmed Large Storage including Undercover Facilities with Workshop and Customer Waiting Room. Tel 24/7 Control: 01785 282777 / 01952 813444 – Unit 13, Ladfordfields Ind Park, Seighford, Stafford ST18 9QE – 3 miles from M6 J14 – www.buckleymotors.co.uk

BURKE BROS RECOVERY. 24 Hr roadside assistance, recovery for cars, vans and commercials. Tel: 01902 795555. Burke Bros Trading Estate, Fox's Lane, Wolverhampton, WV1 1PA.

Miles Green Garage Ltd. 24 hr Recovery for Cars, Light Commercials, Caravans, Horsebox, Motorcycle Recovery, Workshop, Servicing, & Mot's. tel 01782 720333. Heathcote Rd, Bignal End, Stoke On Trent, Staffs, ST7 8LL

Richford Motor Services Ltd. 24hr recovery for cars, motorcycles, all commercials & coaches. Workshop, servicing & MOT's. Secured storage Fenton Industrial Estate, Govan Road, Stoke-on-trent, ST4 2RS Tel: 01782 844 840

Stirling

EUROROUTE RECOVERY. Bandeath Industrial Estate, Throsk, STIRLING. FK7 7NP. Tel 03 300 300 100 www.eurorouterecovery.co.uk

Suffolk

DJ RECOVERY IPSWICH. 24/7 Recovery for Motorcycle, car, Van & Light Vehicle Recovery. storage & compound. PAS 43 approved. tel 01449 711129 Unit 2, Mickfield Business park, Stonham Road, Stowmarket, Suffolk. IP14 9LT. djrecoveryipswch@outlook.comM. www.djrecoveryipswich.co.uk

MANCHETTS RECOVERY. Place Farm, Ing-ham, Bury St Edmunds, Suffolk, IP31 1NQ. Tel: 01284 728802. 24 Hrs.

LJ Transportation. 24/7 Roadside & Recovery Assistance throughout the UK & Europe from Nationwide Assistance Group, offering 24/7 call centre facilities & nationwide storage yards, We are supported by over 850 agents across the UK and Europe. Call our Operations Centre on 01621 730000 or email enquiries@nwva.co.uk for further information. To become an agent email network@nwva.co.uk

Surrey

DR RECOVERY. 24hr hr Recovery for Cars, Light commercials, caravans , Motorhomes & motorcycles. tel 01342 843080. Unit 3, Brickhouse lane, South Godstone, Surrey RH9 8JW.

FIRSTLINE RECOVERY. 24/7 Recovery & Roadside Assistance for cars, Light & Heavy Commercials, Transportation, Bus & Coach, Caravans, Horsebox, Caravans & Motorhomes & motorcycles, Hiab, Eastrac Machine. Workshop, Tyres. PAS 43. Tel 0209 9761066. Unit 1, Blenheim Trade Centre, Epsom, Surrey. KT19 9XX.

NATIONAL RESCUE. 24hr recovery and roadside assistance for cars, motorcycles, caravans and light commercials up to 3.5 ton. Full workshop facilities for all servicing and MOT requirements. Fully ISO 9001 & PAS 43 accredited. Tel 020 8397 0325. Rescue House, 46 Oakcroft Road, Chessington, Surrey, KT9 1RH

Sussex

MIDHURST ENGINEERING & MOTOR CO LTD. 24 hour recovery for cars, light commercials and motorcycles, workshop, bodyshop, servicing, MOT's and storage. Tel: 01730 812162. Rumbolds Hill, Midhurst, West Sussex GU29 9DD.

Southern Recovery Services. Heavy Recovery Specialists for On & Off Road Recovery. tel 01273 833181. Fairbridge way, Burgess Hill, West Sussex. RH15 8BF. www.southern-recovery-services.co.uk

Swindon

SCORPION ENGINEERING. 24hr Recovery for cars, light and heavy commercials and motorcycles. PAS43 and ISO9001 accredited Hiab. Workshop; servicing and MOT's, storage facilities Tel: 01793 612400 Mobile: 07714 206897 Unit 1-4 Newcombe Drive, Hawksworth Ind Est, Swindon SN2 1DX.

Tayside

MEET THE

Professionals

BLAIR ATHOLL GARAGE. 24hr recovery cars & light commercials, motorcycles, storage, workshop, MOT's & servicing. Blair Atholl, Perthshire, Tayside. Tel: 01796 481221 Fax: 01796 481330.

Walsall

E&S MOTORS. 24 hour breakdown & recovery assistance for cars/ light commercials & motorcycles. Established 42 years, Link Recovery Specialists, 'O' License Vehicles, Vehicle MOT, Maintenance and Repairs, Secure Storage, PAS43, ISO9001 and NHSS17 Accredited. Covering the West Midlands and beyond. Walsall 01922 615358. WS2 9NU. www.eandsmotors.co.uk. Warwickshire

CMG. 24 Hr Vehicle Assistance, Car & Commercial Roadside, Recovery Specialist. 70 Ton Rotator – Air Cushion – Recovery Backloads – STGO Low Loaders – Nationwide Fleet Assistance. Single & Multicar Transportation. Motorcycle Recovery & 24 Hr Tyre Services. Control Centre Tel: 0800-282-449. www.cmg-org.com

CROUCH RECOVERY. Tel: 01162 792245. Car and Commercial Recovery Service. Specialist in Heavy Recovery, Mobile Cranes upto 75 tonne, rotators upto 75 tonne, Coach Trailers, Heavy Haulage Trailers, winch tractors, Air cushions, Incident management, Service Van and Workshops. Warehousing & Load Handling equipment, Telehandlers, Roll on-off bins, skips, Grab Lorries, Diggers, Bulk Tipplers etc.

Wessex

WESSEX RECOVERY. 24 Roadside assistance for Cars & light Commercial Recovery, Motorcycles, Service Vans, Secured storage, PAS 43 Accredited, Tel 0118 4372414. Pioneer Road, Faringdon, SN7 7BU.

West Lothian

CVS 24hr Recovery. for Cars, Light & Heavy Commercials. Bus & Coach, Horsebox, Caravans, motorcycles. Commercial Service Repair Vans. Off Road Recovery Winching specialists. Roadside assistance. Workshop, Servicing & MOT Prep. Tel. 01506 437372. mobile 078488 24247. Simpson Parkway, Livingston, West Lothian. EH54 7BH

West Midlands

BURKE BROS RECOVERY. 24 Hr roadside assistance, recovery for cars, vans and commercials. Tel: 01902 795555. Burke Bros Trading Estate, Fox's Lane, Wolverhampton, WV1 1PA.

AUTORITE INDUSTRIES (WILLENHALL) LIMITED. 24 hr recovery - specialising in HGV, PSV, Light Commercials, cars, motorcycles and plant movement. Well established 5 Acre Site with own light and heavy workshops. Authorised MOT station. Secure parking. Tel: 01902 637448 - www.autoriterecovery.co.uk - Gemma@autorite.eclipse.co.uk. 3 Morgan Close, Ashmore Lake Business Park, Willenhall, West Midlands, WV12 4LH.

CMG. 24 Hr Vehicle Assistance, Car & Commercial Roadside, Recovery Specialist. 70 Ton Rotator – Air Cushion – Recovery Backloads – STGO Low Loaders – Nationwide Fleet Assistance. Single & Multicar Trans-

portation. Motorcycle Recovery & 24 Hr Tyre Services. Control Centre Tel: 0800-282-449. www.cmg-org.com

Jacksons Recovery Ltd. 24hr Recovery for Cars, Light Commercials, Motorcycles. Workshop, Mot's and Servicing. Fuelrain, Pas 43, ISO 9001. Sector 17. Tel 0121 3335555. 77/78 Newtown Row, Birmingham, West Midlands. B6 4HG. Head Office, Northcote Road, Stechford, Birmingham. B33 9BE. Depots at Birmingham & Nottingham.

Lodar Ltd. 60, Sandwell Street, Walsall, West Midlands. WS1 3EB. Tel 01922 613 633, Contact Michael Jones, E: sales@lodar.com W: www.lodar.com

RIKFIT RECOVERY. Vehicle Recovery for Cars & Light Commercials. PAS 43. Workshop, Car Repairs, Servicing & MOT's. Mobile Tyre Fitting. tel 0121 688 8282. email: recovery@rikfit.com website: www.rikfit.com. 28 Redditch Road, Kings Norton, Birmingham, West Midlands. B38 8RN

Auto-Support Rogers Rescue. Depots in South Birmingham West Midlands Worcestershire & Cheltenham 24hr Car Commercial roadside vehicle assistance specialising in RTC on off road Prestige undercover & tow trax low loader movement Full HGV -Car workshops. Mots. Call control centre 08700707777. e.mail info@rogersrescue.co.uk wwwrogersrescue.co.uk

West Yorkshire

HIGHWAY RECOVERY LTD. 24 hour recovery for cars, all commercials, bus & coach, horsebox, plant, hazchem & motorcycles. Tel: 0845 5553030. Highway House, A1 Bus Park, Knottingley, West Yorkshire, WF11 0BU.

Wiltshire

ND SERVICES. 24 hour recovery for cars, light and heavy commercials and motorcycles. 2 garages and workshops covering Wiltshire, West Berkshire and Oxfordshire including Swindon, Marlborough, Hungerford and Newbury areas. MOT's and servicing, storage facilities. Tel: 01488 72118. Unit F, Ariel Business Park, Lambourn Woodlands, Membury, Berkshire, RG17 7RZ.

Wolverhampton

AUTORITE INDUSTRIES (WILLENHALL) LIMITED. 24 hr recovery - specialising in HGV, PSV, Light Commercials, cars, motorcycles and plant movement. Well established 5 Acre Site with own light and heavy workshops. Authorised MOT station. Secure parking. Tel: 01902 637448 - www.autoriterecovery.co.uk - glen@autoriterecovery.co.uk. 3 Morgan Close, Ashmore Lake Business Park, Willenhall, West Midlands, WV12 4LH.

BURKE BROS RECOVERY. 24 Hr roadside assistance, recovery for cars, vans and commercials. Tel: 01902 795555. Burke Bros Trading Estate, Fox's Lane, Wolverhampton, WV1 1PA.

E&S MOTORS. 24 hour breakdown & recovery assistance for cars/ light commercials & motorcycles. Established 42

The Difference... **CVS 24** ...Is Better

Car & commercial
Light & heavy recovery
inc.

Bus, coach recovery & motorcycles,
Horsebox & caravans
Off road recovery & winching
Commercial service vans &
Roadside assistance

Tel: 01506 437372
24 hour: 078488 24247
Simpson Parkway, Livingston, West Lothian. EH54 7BH



years, Link Recovery Specialists, 'O' License Vehicles, Vehicle MOT, Maintenance and Repairs, Secure Storage, PAS43, ISO9001 and NHSS17 Accredited. Covering the West Midlands and beyond. Wolverhampton 01922 615358 (Head Office). WV14 0QJ. www.eandsmotors.co.uk.

Worcestershire

AUTO VEHICLE SPECIALISTS. 24hr Recovery for Cars, Light Commercials upto 3.5 ton & motorcycles. Workshop, Servicing & Mot's. tel 01562 68427. Unit 3,8 Lisle avenue, Kidderminster, Worcestershire. DY11 7DL.

Auto-Support Rogers Rescue. Depots in South Birmingham West Midlands Worcestershire & Cheltenham 24hr Car Commercial roadside vehicle assistance specialising in RTC on off road Prestige undercover & tow trax low loader movement Full HGV -Car workshops. Mots. Call control centre 08700707777. e.mail info@rogersrescue.co.uk wwwrogersrescue.co.uk.

SAVE THE DATE!
18th-19th
SEPTEMBER
2024
Telford
International
Centre



KEN WILLIAMS RECOVERY **KW**
24HR Heavy Recovery
Swansea
01792 587605
Carmarthen
01267 232399
www.kenwilliamsmotors.co.uk



TRY CAR MECHANICS

**PLUS!
RECEIVE
2 FREE
GIFTS**

Get **EXPERT ADVICE** & **TOP TIPS** from leading **TECHNICIANS** every month!



Subscribe to *Car Mechanics* and you will benefit from top tips from leading technicians and motoring journalists.

- ▶ Workshop Tales
- ▶ Reader's motoring problems solved
- ▶ Diagnostics series on popular makes/models
- ▶ Projects cars bought from auction - repaired

Martyn Knowles, Editor



JOIN THOUSANDS OF SATISFIED SUBSCRIBERS!



**WORTH
£11.99**

Get a
Car Mechanics
beanie



**WORTH
£9.99**

Plus a
Car Mechanics
Expert Book
Get to grips with
BODYWORK

**WHEN YOU
SUBSCRIBE
TODAY!**

3 EASY WAYS TO SUBSCRIBE

- 1 Go to shop.kelsey.co.uk/cmeprorecovery
- 2 Call us **01959 543747** quote **CMEProRecovery**
- 3 Scan the QR code →



Hotline open: Monday to Friday 8.30am-5.30pm. Calls charged at your standard network rate.

Terms and conditions: *UK Direct Debit and Continuous Credit Card offer only. You will pay £26.94 for your first six months (6 issues) and then pay £47.88 per year (12 issues). Offer ends 31st August 2024. Savings based on the standard cover price of £4.99 plus Kelsey's standard postage price (£2.75) per issue. Car Mechanics is published monthly (12 issues per year). Other UK offers available. For offers outside the UK visit shop.kelsey.co.uk/CME. Your subscription will start with the next available issue and you will receive 6 issues in your first term and then 12 issues a year. Free gifts will be despatched on receipt of first payment. Prices correct at time of print and subject to change. If you decide to cancel your subscription we will put a stop to any further payments being taken and will send the remaining issues that you have already paid for. Free gifts while stocks last. Full terms and conditions, visit shop.kelsey.co.uk/terms. Data protection: We take great care in handling your personal details and these will only ever be used as set out in our privacy policy which can be viewed at shop.kelsey.co.uk/privacy-policy

Service call

Contact Marie Dobson on 01952 455334

VEHICLE RECYCLING

WEST PENNINE TRUCKS

SCANIA PARTS

Dismantling
Most Models
Engines
Transmissions
Cabs
Reconditioning Service
Credit Cards accepted

01547 528600

VEHICLE RECYCLING

SNOWS COMMERCIALS LTD

Commercial Vehicle Recyclers

We specialise in late heavy commercial salvage for recycling, national collection and storage, fully licensed site

COMPTON GREENFIELD,
BRISTOL, BS35 5RY

Tel: 01454 632508 / 632325

Fax: 01454 633752

www.snows-commercials.co.uk
Email: info@snows-commercials.co.uk

DYNOMECH

LOCKING WHEEL
NUT REMOVER



01977 520666

WWW.DYNOMECH.CO.UK

NEW FOR 2024

- MUTI PATENTED TOOL
- ALL NEW DUAL STRIKE IMPACT DRIVER
- HEX DRIVE BODY
- HEX DRIVE BLADE SYSTEM
- STEEL GUARD HAND PROTECTION RING
- LOCK NUT EJECTION SYSTEM
- MULTI-SIZE SHROUD SYSTEM
- REMOVABLE FOAM INSERT

PRICE FROM
£169.99

USE CODE AND GET 4

FREE BLADE C

DYN70

WITH THE PURCHASE OF
A DY2300

BUY
NOW



AS USED BY THE
RAC



TOW SHOW



SAVE THE DATE!

Wednesday 18th
and Thursday 19th
September 2024

truck MART



SELL YOUR VEHICLES
HERE! THE TRUCKMART



SELL YOUR VEHICLES
HERE! THE TRUCKMART

2 WAYS TO SELL YOUR TRUCK

- 1 Advertise your vehicle in **TruckMART**
- 2 Follow-up advertising in **TruckMART** - HALF PRICE!

call **MARIE DOBSON**
01952 455334
marie@talk-media.uk

KNIPEX'S BICOLOUR COBRA® WATER PUMP PLIERS



This holiday season, KNIPEX is offering something truly special for tool enthusiasts – a limited edition of their renowned Cobra® Water Pump Pliers. Featuring a striking bicolour design, this exclusive release combines top-notch engineering with festive flair, making it the perfect gift for professionals and DIYers alike.

The 180 mm Cobra® pliers come in a unique half-bright chrome-plated, half-dark phosphate finish, complemented by sleek black plastic grips. More than just a collector's item, these pliers are packed with high-tech features designed for performance. With a fine adjustment mechanism for precise control, a gripping width of up to 42 mm and the self-locking effect

the range is famous for, these tools are built to handle the toughest tasks with ease.

The hardened teeth provide a strong, lasting grip, even during intensive use, while the fine adjustment feature allows for a precise, secure fit with just a push of a button. The tool's self-locking function on pipes and nuts ensures no slipping, reducing the effort required, and the pinch guard prevents any risk of crushing injuries. Not only is the tool exceptional, but the packaging also reflects the holiday spirit. Each set of pliers comes in a festive gift wrapping available in black or white, adding an extra touch of elegance and making it an ideal gift.



MILES GREEN GARAGE LTD

24Hr Recovery for Cars,
Light Commercials, Caravans,
Horsebox, Motorcycles, Workshop,
Servicing & Mots PAS 43



Tel: 01782 720333
Heathcote Rd, Bignall End,
Stoke On Trent, Staffs, ST7 8LL

Professional Recovery

IN PRINT, DIGITAL AND LIVE EVENTS

TO ADVERTISE
HERE CALL
ANNIE MULCRONE
ON 01732 904511
OR EMAIL
annie@talk-media.uk



ROGERS RESCUE - AUTO SUPPORT

Tel: 08700 707777

www.rogersrescue.co.uk

Full car & commercial service
& repair workshops



24/7 car & commercial rescue & recovery

COVERING:

- Birmingham
- West Midlands
- Worcestershire
- Gloucestershire
- Midlands Motorway Networks

Rogers Rescue Ltd,
Matthew Lane, Hoo Farm
Ind Est, Kidderminster,
DY11 7RA

Auto Support Ltd,
Strensham
Service Area, M5 South,
Strensham, Worcester,
WR8 9LJ

These Limited Edition Cobra® pliers won't be around for long. With stock available only while supplies last, this exclusive release is a must-have for anyone looking to add a high-quality, functional and beautifully designed tool to their collection.





Official Vehicle Collision Recovery and Storage Management Partner

Nationwide Vehicle Assistance provides collision recovery and storage management services for insurance companies, motor manufacturers and collision after-care companies.



With our network of more than 1,000 agents and 35,000 recovery vehicles you can rely on us to deliver.

☎ **01621 730 000**

✉ **sales@nwva.co.uk**

🖱 **nwva.co.uk/westham**